

Literature: KPS-001-0323



PRODUCT GUIDE

Date: May 2023

Rev: 01



Contents

AXLE MODEL STOCK CODE CONFIGURATOR 3

 KF22 Series 4

 KF29 Series 5

 KK44 Series 6

 KF21 Series 7

 KF37 Series 8

 KF75 Series 9

 KF85 Series 10

 KSS12 Series 11

 KF26 Series 12

 KF23 Series 13

 KF36 Series 14

 FB24 Series 15

 KSS13 Series 16

 KSS16 Series 17

 KFS16 Series 18

CAST SUSPENSION STOCK CODE CONFIGURATOR.....19

 KHDO Series 20

 KHU Series 21

K HITCH FABRICATED SUSPENSION STOCK CODE CONFIGURATOR22

 KH680 Series 23

FUWA FABRICATED SUSPENSION STOCK CODE CONFIGURATOR24

 FW86 Series 25

 FW20 Series 26

WEWELER SUSPENSION STOCK CODE CONFIGURATOR27

 Ultra Lite Series 28

 Euro Series 29

 Heavy Duty Series 30

 Heavy Duty Plus Series 31

 MBS Series 32

K HITCH AIR SUSPENSION STOCK CODE CONFIGURATOR33

 KT230 Series 34

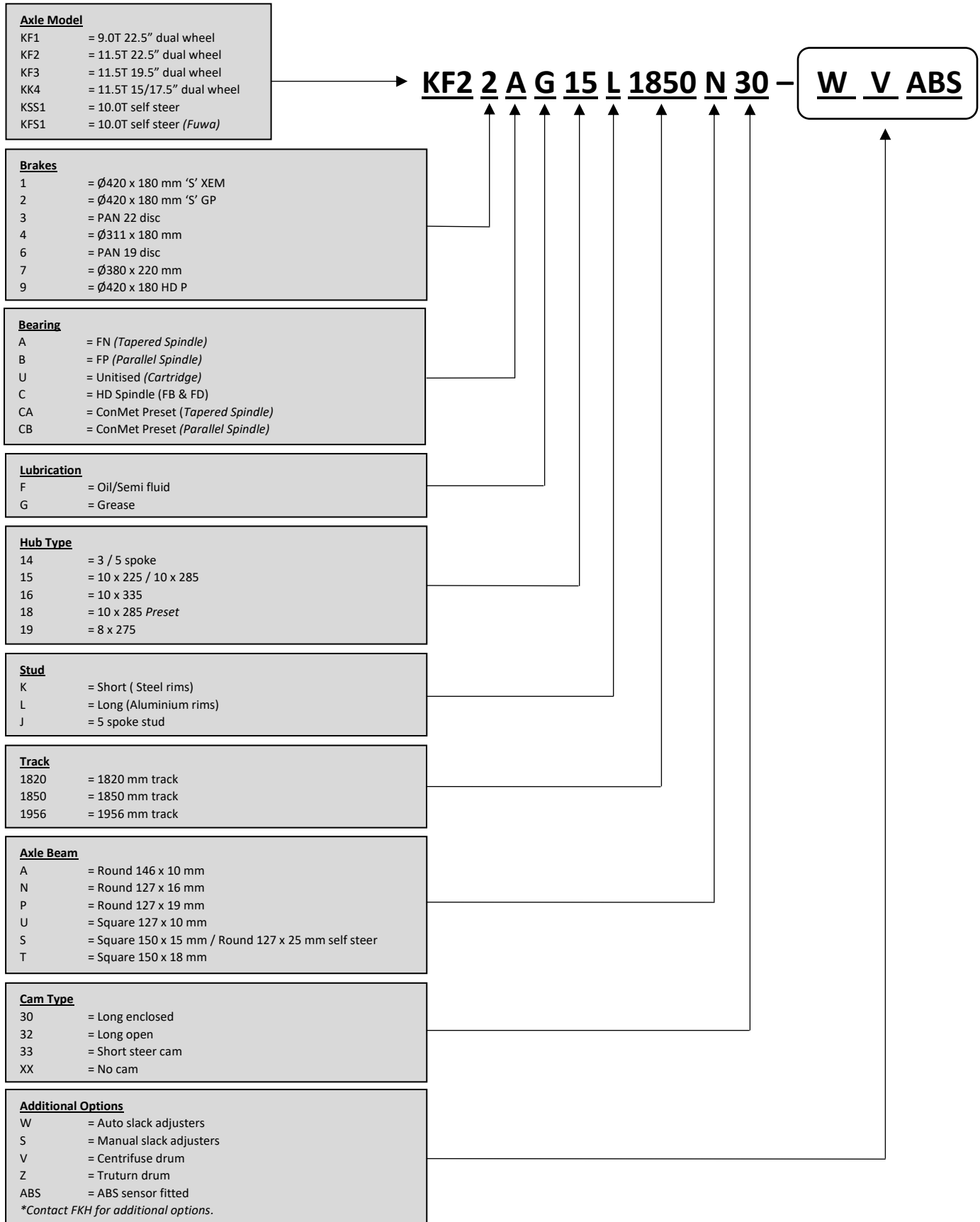
 KT250 Series 35

 KI25K Series 36

FIFTH WHEEL W/O BALLRACE STOCK CODE CONFIGURATOR	37
FIFTH WHEEL W/ BALLRACE STOCK CODE CONFIGURATOR	38
KA10A50 Series	39
KA12A50 Series	40
KA10C50 Series.....	41
KA11C50 Series.....	42
KA12C50 Series.....	43
KA13C50 Series.....	44
KA11D90 Series	45
KA13D90 Series	46
KC10C50 Series.....	47
KH10D90 Series	48
KH11D90 Series	49
KH12D90 Series	50
KH13D90 Series	51
KS15E90 Series	52
KS16F90 Series	53
KD15E90 Series.....	54
Ballraces	55
LANDING LEG STOCK CODE CONFIGURATOR	56
Landing Leg Series	57
SERVICE INFORMATION.....	58
CONTACT US	59

AXLE MODEL STOCK CODE CONFIGURATOR

EXPLANATION OF K HITCH AXLE CODE



KF22 Series

Axle – Drum Brake



Axle Standard Features

- Beam – Round 127 x 15mm one piece forged, with swaged spindles and induction hardened bearing journals.
- Brake spider – 1 piece forged
- Brake Type – Ø420x180 (16.5" x 7") GP – 4515
- Camshaft – Enclosed 1 ½" – 10 Spline
- ABS Ready – Pole ring & sensor block fitted.
- Lube – Grease
- SARN: 35665, CTA-035665

Optional Features

- Centrifuse Drums *(Conmet only)*
- Truturn Drum
- Manual slack adjusters
- Auto slack adjusters
- ABS sensors and leads

Optional Features - Sold Separately

- Hubo
- Oil
- Cambering
- Boosters

Axle Model	Spindle	Axle Capacity (Ton)	Track (mm)	Axle Beam (mm)	Stud	PCD	Lubrication	Weight Approx (kg)
KF22AG14J1820N30	FN	11.5	1820	Ø127x15	3/4 x 2 1/2 - 10UNC	5 Spoke	Grease	345
KF22AG14J1850N30	FN	11.5	1850	Ø127x15	3/4 x 2 1/2 - 10UNC	5 Spoke	Grease	350
KF22AG15K1820N30	FN	11.5	1820	Ø127x15	M22x1.5x94	10 - 285.75	Grease	320
KF22AG15L1820N30	FN	11.5	1820	Ø127x15	M22x1.5x123	10 - 285.75	Grease	320
KF22AG15K1850N30	FN	11.5	1850	Ø127x15	M22x1.5x94	10 - 285.75	Grease	325
KF22AG15L1850N30	FN	11.5	1850	Ø127x15	M22x1.5x123	10 - 285.75	Grease	325
KF22AG16K1820N30	FN	11.5	1820	Ø127x15	M22x1.5x94	10- 335	Grease	330
KF22AG16L1820N30	FN	11.5	1820	Ø127x15	M22x1.5x123	10- 335	Grease	330
KF22AG16K1850N30	FN	11.5	1850	Ø127x15	M22x1.5x94	10- 335	Grease	335
KF22AG16L1850N30	FN	11.5	1850	Ø127x15	M22x1.5x123	10- 335	Grease	335
KF22BG14J1820N30	FP	11.5	1820	Ø127x15	3/4 x 2 1/2 - 10UNC	5 Spoke	Grease	365
KF22BG14J1850N30	FP	11.5	1850	Ø127x15	3/4 x 2 1/2 - 10UNC	5 Spoke	Grease	370
KF22BG15K1820N30	FP	11.5	1820	Ø127x15	M22x1.5x94	10 - 285.75	Grease	340
KF22BG15L1820N30	FP	11.5	1820	Ø127x15	M22x1.5x123	10 - 285.75	Grease	340
KF22BG15K1850N30	FP	11.5	1850	Ø127x15	M22x1.5x94	10 - 285.75	Grease	345
KF22BG15L1850N30	FP	11.5	1850	Ø127x15	M22x1.5x123	10 - 285.75	Grease	345
KF22BG16K1820N30	FP	11.5	1820	Ø127x15	M22x1.5x94	10- 335	Grease	350
KF22BG16L1820N30	FP	11.5	1820	Ø127x15	M22x1.5x123	10- 335	Grease	350
KF22BG16K1850N30	FP	11.5	1850	Ø127x15	M22x1.5x94	10- 335	Grease	355
KF22BG16L1850N30	FP	11.5	1850	Ø127x15	M22x1.5x123	10- 335	Grease	355
KF22CBF15L1820N30	FP	11.5	1820	Ø127x15	M22x1.5x123	10 – 285.75	Semi fluid	330
KF22CBF15L1850N30	FP	11.5	1850	Ø127x15	M22x1.5x123	10 – 285.75	Semi fluid	335
KF22CBF16L1820N30	FP	11.5	1820	Ø127x15	M22x1.5x123	10 – 335	Semi fluid	340
KF22CBF16L1850N30	FP	11.5	1850	Ø127x15	M22x1.5x123	10 – 335	Semi fluid	345
KF22CBF18L1820N30	FP	11.5	1820	Ø127x15	M22x1.5x123	10 – 285.75	Semi fluid	310
KF22CBF18L1850N30	FP	11.5	1850	Ø127x15	M22x1.5x123	10 – 285.75	Semi fluid	315
KF22UG15K1820N30	UNITISED	11.5	1820	Ø127x15	M22x1.5x94	10 - 285.75	Grease	340
KF22UG15L1820N30	UNITISED	11.5	1820	Ø127x15	M22x1.5x123	10 - 285.75	Grease	340
KF22UG15K1850N30	UNITISED	11.5	1850	Ø127x15	M22x1.5x94	10 - 285.75	Grease	345
KF22UG15L1850N30	UNITISED	11.5	1850	Ø127x15	M22x1.5x123	10 - 285.75	Grease	345
KF22CBF18L1850A32	FP	11.5	1850	Ø146x10	M22x1.5x123	10 - 285.75	Grease	280

* Contact FKH for optional features.

** KF22CBF18L1850A32 is only suitable with MBS series suspension.

KF29 Series

Axle – Drum Brake



Axle Standard Features

- Beam – Round 127 x 15mm one piece forged, with swaged spindles and induction hardened bearing journals.
- Brake spider – 1 piece forged
- Brake Type – ‘P Brake’ - Ø420x180 (16.5”x7”) GP – 4515
- Camshaft – Enclosed 1 ½” – 10 Spline
- ABS Ready – Pole ring & sensor block fitted.
- Lube – Grease
- SARN: 35665, CTA-035665

Optional Features

- Centrifuse Drums (*Conmet only*)
- Truturn Drum
- Manual slack adjusters
- Auto slack adjusters
- ABS sensors and leads

Optional Features - Sold Separately

- Hubo
- Oil
- Cambering
- Boosters

Axle Model	Spindle	Axle Capacity (Ton)	Track (mm)	Axle Beam (mm)	Stud	PCD	Lubrication	Weight Approx (kg)
KF29AG14J1820N30	FN	11.5	1820	Ø127x15	3/4 x 2 1/2 - 10UNC	5 Spoke	Grease	345
KF29AG14J1850N30	FN	11.5	1850	Ø127x15	3/4 x 2 1/2 - 10UNC	5 Spoke	Grease	350
KF29AG15K1820N30	FN	11.5	1820	Ø127x15	M22x1.5x94	10 - 285.75	Grease	320
KF29AG15L1820N30	FN	11.5	1820	Ø127x15	M22x1.5x123	10 - 285.75	Grease	320
KF29AG15K1850N30	FN	11.5	1850	Ø127x15	M22x1.5x94	10 - 285.75	Grease	325
KF29AG15L1850N30	FN	11.5	1850	Ø127x15	M22x1.5x123	10 - 285.75	Grease	325
KF29AG16K1820N30	FN	11.5	1820	Ø127x15	M22x1.5x94	10- 335	Grease	330
KF29AG16L1820N30	FN	11.5	1820	Ø127x15	M22x1.5x123	10- 335	Grease	330
KF29AG16K1850N30	FN	11.5	1850	Ø127x15	M22x1.5x94	10- 335	Grease	335
KF29AG16L1850N30	FN	11.5	1850	Ø127x15	M22x1.5x123	10- 335	Grease	335
KF29BG14J1820N30	FP	11.5	1820	Ø127x15	3/4 x 2 1/2 - 10UNC	5 Spoke	Grease	365
KF29BG14J1850N30	FP	11.5	1850	Ø127x15	3/4 x 2 1/2 - 10UNC	5 Spoke	Grease	370
KF29BG15K1820N30	FP	11.5	1820	Ø127x15	M22x1.5x94	10 - 285.75	Grease	340
KF29BG15L1820N30	FP	11.5	1820	Ø127x15	M22x1.5x123	10 - 285.75	Grease	340
KF29BG15K1850N30	FP	11.5	1850	Ø127x15	M22x1.5x94	10 - 285.75	Grease	345
KF29BG15L1850N30	FP	11.5	1850	Ø127x15	M22x1.5x123	10 - 285.75	Grease	345
KF29BG16K1820N30	FP	11.5	1820	Ø127x15	M22x1.5x94	10- 335	Grease	350
KF29BG16L1820N30	FP	11.5	1820	Ø127x15	M22x1.5x123	10- 335	Grease	350
KF29BG16K1850N30	FP	11.5	1850	Ø127x15	M22x1.5x94	10- 335	Grease	355
KF29BG16L1850N30	FP	11.5	1850	Ø127x15	M22x1.5x123	10- 335	Grease	355
KF29CBF15L1820N30	FP	11.5	1820	Ø127x15	M22x1.5x123	10 – 285.75	Semi fluid	330
KF29CBF15L1850N30	FP	11.5	1850	Ø127x15	M22x1.5x123	10 – 285.75	Semi fluid	335
KF29CBF16L1820N30	FP	11.5	1820	Ø127x15	M22x1.5x123	10 – 335	Semi fluid	340
KF29CBF16L1850N30	FP	11.5	1850	Ø127x15	M22x1.5x123	10 – 335	Semi fluid	345
KF29CBF18L1820N30	FP	11.5	1820	Ø127x15	M22x1.5x123	10 – 285.75	Semi fluid	310
KF29CBF18L1850N30	FP	11.5	1850	Ø127x15	M22x1.5x123	10 – 285.75	Semi fluid	315
KF29UG15K1820N30	UNITISED	11.5	1820	Ø127x15	M22x1.5x94	10 - 285.75	Grease	340
KF29UG15L1820N30	UNITISED	11.5	1820	Ø127x15	M22x1.5x123	10 - 285.75	Grease	340
KF29UG15K1850N30	UNITISED	11.5	1850	Ø127x15	M22x1.5x94	10 - 285.75	Grease	345
KF29UG15L1850N30	UNITISED	11.5	1850	Ø127x15	M22x1.5x123	10 - 285.75	Grease	345

* Contact FKH for optional features.

KK44 Series

Axle – Drum Brake



Axle Standard Features

- Beam – Round 127 x 15mm one piece forged, with swaged spindles and induction hardened bearing journals.
- Brake spider – 1 piece forged
- Brake Type – $\varnothing 311 \times 190$ (12.25" x 7.5") GP – RW9/13/2
- Camshaft – Open 1 1/2" – 10 Spline
- ABS Ready – Pole ring & sensor block fitted.
- Lube – Grease
- SARN: 35669, CTA-035669

Optional Features

- Manual slack adjusters
- Auto slack adjusters
- ABS sensors and leads

Optional Features - Sold Separately

- Hubo
- Oil
- Cambering
- Boosters

Axle Model	Spindle	Axle Capacity (Ton)	Track (mm)	Axle Beam (mm)	Stud	PCD	Lubrication	Weight Approx (kg)
KK44AG14J1820N32	FN	10.5	1820	$\varnothing 127 \times 15$	3/4 x 2 1/2 - 10UNC	3 Spoke	Grease	310
KK44AG14J1850N32	FN	10.5	1850	$\varnothing 127 \times 15$	3/4 x 2 1/2 - 10UNC	3 Spoke	Grease	315
KK44AG14J1956N32	FN	10.5	1956	$\varnothing 127 \times 15$	3/4 x 2 1/2 - 10UNC	3 Spoke	Grease	330
KK44AG15K1820N32	FN	10.5	1820	$\varnothing 127 \times 15$	M22x1.5x94	10 – 225	Grease	280
KK44AG15L1820N32	FN	10.5	1820	$\varnothing 127 \times 15$	M22x1.5x123	10 – 225	Grease	280
KK44AG15K1850N32	FN	10.5	1850	$\varnothing 127 \times 15$	M22x1.5x94	10 – 225	Grease	285
KK44AG15L1850N32	FN	10.5	1850	$\varnothing 127 \times 15$	M22x1.5x123	10 – 225	Grease	285
KK44AG15K1956N32	FN	10.5	1956	$\varnothing 127 \times 15$	M22x1.5x94	10 – 225	Grease	300
KK44AG15L1956N32	FN	10.5	1956	$\varnothing 127 \times 15$	M22x1.5x123	10 – 225	Grease	300

* Contact FKH for optional features.

KF21 Series

Axle – Drum Brake



Axle Standard Features

- Beam – Round 127 x 18mm OR Square 127 x 15 one piece forged, with swaged spindles and induction hardened bearing journals.
- Brake spider – 1 piece forged
- Brake Type – Ø420x180 (16.5" x 7") XEM – 4515
- Camshaft – Enclosed 1 5/8" – 37 Spline
- ABS Ready – Pole ring & sensor block fitted.
- Lube – Grease
- SARN: 35665, CTA-035665

Optional Features

- Truturn Drum
- Manual slack adjusters
- Auto slack adjusters
- ABS sensors and leads

Optional Features - Sold Separately

- Hubo
- Oil
- Cambering
- Boosters

Axle Model	Spindle	Axle Capacity (Ton)	Track (mm)	Axle Beam (mm)	Stud	PCD	Lubrication	Weight Approx (kg)
KF21BG14J1850P30	FP	11.5	1850	Ø127x18	3/4 x 2 1/2 - 10UNC	5 Spoke	Grease	390
KF21BG15K1850P30	FP	11.5	1850	Ø127x18	M22x1.5x94	10 - 285.75	Grease	365
KF21BG15L1850P30	FP	11.5	1850	Ø127x18	M22x1.5x123	10 - 285.75	Grease	365
KF21BG16K1850P30	FP	11.5	1850	Ø127x18	M22x1.5x94	10- 335	Grease	365
KF21BG16L1850P30	FP	11.5	1850	Ø127x18	M22x1.5x123	10- 335	Grease	365
KF21BG14J1850U30	FP	11.5	1850	□127x10	3/4 x 2 1/2 - 10UNC	5 Spoke	Grease	365
KF21BG15K1850U30	FP	11.5	1850	□127x10	M22x1.5x94	10 - 285.75	Grease	345
KF21BG15L1850U30	FP	11.5	1850	□127x10	M22x1.5x123	10 - 285.75	Grease	345
KF21BG16K1850U30	FP	11.5	1850	□127x10	M22x1.5x94	10- 335	Grease	345
KF21BG16L1850U30	FP	11.5	1850	□127x10	M22x1.5x123	10- 335	Grease	345

* Contact FKH for optional features.

KF37 Series

Axle – Drum Brake



Axle Standard Features

- Beam – Round 127 x 15mm one piece forged, with swaged spindles and induction hardened bearing journals.
- Brake spider – 1 piece forged
- Brake Type – Ø380x220 (15" x 5-5/8") GP – 4710
- Camshaft – Open 1 ½" – 10 Spline
- ABS Ready – Pole ring & sensor block fitted.
- Lube – Grease
- SARN: 41030, CTA-041030

Optional Features

- Manual slack adjusters
- Auto slack adjusters
- ABS sensors and leads

Optional Features - Sold Separately

- Hubo
- Oil
- Cambering
- Boosters

Axle Model	Spindle	Axle Capacity (Ton)	Track (mm)	Axle Beam (mm)	Stud	PCD	Lubrication	Weight Approx (kg)
KF37AG19K1820N32	FN	11.5	1820	Ø127x15	M22x1.5x94	8 – 275	Grease	315
KF37AG19L1820N32	FN	11.5	1820	Ø127x15	M22x1.5x123	8 – 275	Grease	315
KF37AG19K1850N32	FN	11.5	1850	Ø127x15	M22x1.5x94	8 – 275	Grease	320
KF37AG19L1850N32	FN	11.5	1850	Ø127x15	M22x1.5x123	8 – 275	Grease	320

* Contact FKH for optional features.

KF75 Series

Axle – Drum Brake



Axle Standard Features

- Beam – Square 150 x 18mm one piece forged, with swaged spindles and induction hardened bearing journals.
- Brake spider – 1 piece forged
- Brake Type – Ø420x220 (16.5" x 8-5/8") XEM – 4551
- Camshaft – Enclosed 1 5/8" – 37 Spline
- ABS Ready – Pole ring & sensor block fitted.
- Lube – Grease
- SARN: 33079, CTA-033079

Optional Features

- Manual slack adjusters
- Auto slack adjusters
- ABS sensors and leads

Optional Features - Sold Separately

- Hubo
- Oil
- Cambering
- Boosters

Axle Model	Spindle	Axle Capacity (Ton)	Track (mm)	Axle Beam (mm)	Stud	PCD	Lubrication	Weight Approx (kg)
KF75CG16K1850T30	FN-HD	17	1850	□150x18	M24x1.5x140	10 – 335	Grease	415

* Contact FKH for optional features.

KF85 Series

Axle – Drum Brake



Axle Standard Features

- Beam – Square 150 x 18mm one piece forged, with swaged spindles and induction hardened bearing journals.
- Brake spider – 1 piece forged
- Brake Type – Ø420x220 (16.5”x8-5/8”) XEM – 4551
- Camshaft – Enclosed 1 5/8” – 37 Spline
- ABS Ready – Pole ring & sensor block fitted.
- Lube – Grease
- SARN: N/A

Optional Features

- Manual slack adjusters
- Auto slack adjusters
- ABS sensors and leads

Optional Features - Sold Separately

- Hubo
- Cambering
- Boosters

Axle Model	Spindle	Axle Capacity (Ton)	Track (mm)	Axle Beam (mm)	Stud	PCD	Lubrication	Weight Approx (kg)
KF85CG16K1850T30	FN-XHD	20	1850	□150x18	M24x1.5x140	10 – 335	Grease	450

* Contact FKH for optional features.

KSS12 Series

Axle – Drum Brake



Axle Standard Features

- Beam – Round 127 x 25mm self steer, with induction hardened bearing journals.
- Brake spider – Cast
- Brake Type – Ø420x180 (16.5"x7") GP 'Q' - 4515
- Camshaft – Enclosed 1 ½" – 10 Spline
- ABS Ready – Pole ring & sensor block fitted.
- Lube – Grease
- Steer Angle – 12°
- SARN: 35665, CTA-035665

Optional Features

- Centrifuse Drums (*Conmet only*)
- Truturn Drum
- Manual slack adjusters
- Auto slack adjusters
- ABS sensors and leads

Optional Features - Sold Separately

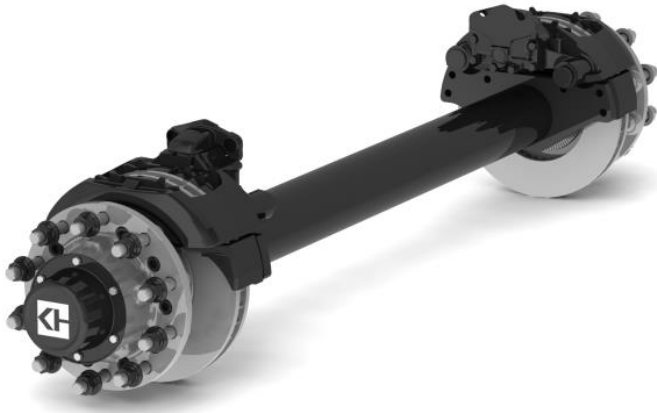
- Hubo
- Oil
- Boosters

Axle Model	Spindle	Axle Capacity (Ton)	Track (mm)	Axle Beam (mm)	Stud	PCD	Lubrication	Weight Approx (kg)
KSS12AG14J1850S33	FN	10.0	1850	Ø127x25	3/4 x 2 1/2 - 10UNC	5 Spoke	Grease	515
KSS12AG15K1850S33	FN	10.0	1850	Ø127x25	M22x1.5x94	10 - 285.75	Grease	490
KSS12AG15L1850S33	FN	10.0	1850	Ø127x25	M22x1.5x123	10 - 285.75	Grease	490
KSS12AG16K1850S33	FN	10.0	1850	Ø127x25	M22x1.5x94	10- 335	Grease	500
KSS12AG16L1850S33	FN	10.0	1850	Ø127x25	M22x1.5x123	10- 335	Grease	500
KSS12CAF15L1850S33	FN	10.0	1850	Ø127x25	M22x1.5x123	10 – 285.75	Semi fluid	490
KSS12BG14J1850S33	FP	10.0	1850	Ø127x25	3/4 x 2 1/2 - 10UNC	5 Spoke	Grease	535
KSS12BG15K1850S33	FP	10.0	1850	Ø127x25	M22x1.5x94	10 - 285.75	Grease	510
KSS12BG15L1850S33	FP	10.0	1850	Ø127x25	M22x1.5x123	10 - 285.75	Grease	510
KSS12BG16K1850S33	FP	10.0	1850	Ø127x25	M22x1.5x94	10- 335	Grease	520
KSS12BG16L1850S33	FP	10.0	1850	Ø127x25	M22x1.5x123	10- 335	Grease	520
KSS12CBF15L1850S33	FP	10.0	1850	Ø127x25	M22x1.5x123	10 – 285.75	Semi fluid	505
KSS12CBF16L1850S33	FP	10.0	1850	Ø127x25	M22x1.5x123	10 – 335	Semi fluid	510
KSS12CBF18L1850S33	FP	10.0	1850	Ø127x25	M22x1.5x123	10 – 285.75	Semi fluid	480

* Contact FKH for optional features.

KF26 Series

Axle – Disc Brake



Axle Standard Features

- Beam – Round 127 x 15mm one piece forged, with swaged spindles and induction hardened bearing journals.
- Brake Type – WABCO PAN 19 Ø377mm Rotor
- ABS Ready – Pole ring & sensor block fitted.
- Lube – Grease
- SARN: 30241, CTA-030241

Optional Features

- ABS sensors and leads

Optional Features - Sold Separately

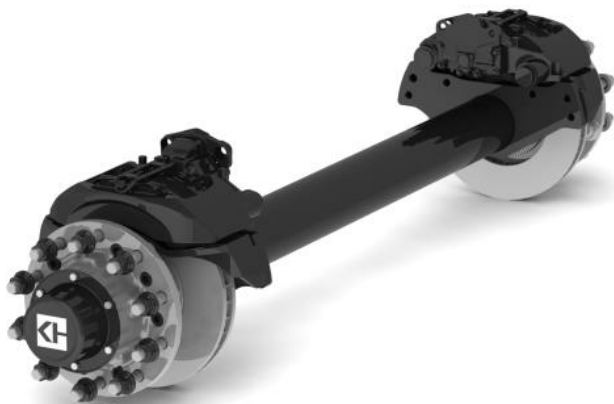
- Hubo
- Oil
- Cambering

Axle Model	Spindle	Axle Capacity (Ton)	Track (mm)	Axle Beam (mm)	Stud	PCD	Lubrication	Weight Approx (kg)
KF26AG14J1820NXX	FN	11.5	1820	Ø127x15	3/4 x 2 1/2 - 10UNC	5 Spoke	Grease	N/A
KF26AG14J1850NXX	FN	11.5	1850	Ø127x15	3/4 x 2 1/2 - 10UNC	5 Spoke	Grease	N/A
KF26AG15K1820NXX	FN	11.5	1820	Ø127x15	M22x1.5x94	10 - 285.75	Grease	285
KF26AG15L1820NXX	FN	11.5	1820	Ø127x15	M22x1.5x123	10 - 285.75	Grease	285
KF26AG15K1850NXX	FN	11.5	1850	Ø127x15	M22x1.5x94	10 - 285.75	Grease	290
KF26AG15L1850NXX	FN	11.5	1850	Ø127x15	M22x1.5x123	10 - 285.75	Grease	290
KF26AG16K1820NXX	FN	11.5	1820	Ø127x15	M22x1.5x94	10- 335	Grease	290
KF26AG16L1820NXX	FN	11.5	1820	Ø127x15	M22x1.5x123	10- 335	Grease	290
KF26AG16K1850NXX	FN	11.5	1850	Ø127x15	M22x1.5x94	10- 335	Grease	295
KF26AG16L1850NXX	FN	11.5	1850	Ø127x15	M22x1.5x123	10- 335	Grease	295
KF26BG14J1820NXX	FP	11.5	1820	Ø127x15	3/4 x 2 1/2 - 10UNC	5 Spoke	Grease	330
KF26BG14J1850NXX	FP	11.5	1850	Ø127x15	3/4 x 2 1/2 - 10UNC	5 Spoke	Grease	335
KF26BG15K1820NXX	FP	11.5	1820	Ø127x15	M22x1.5x94	10 - 285.75	Grease	290
KF26BG15L1820NXX	FP	11.5	1820	Ø127x15	M22x1.5x123	10 - 285.75	Grease	290
KF26BG15K1850NXX	FP	11.5	1850	Ø127x15	M22x1.5x94	10 - 285.75	Grease	295
KF26BG15L1850NXX	FP	11.5	1850	Ø127x15	M22x1.5x123	10 - 285.75	Grease	295
KF26UG15K1820NXX	UNITISED	11.5	1820	Ø127x15	M22x1.5x94	10 - 285.75	Grease	305
KF26UG15L1820NXX	UNITISED	11.5	1820	Ø127x15	M22x1.5x123	10 - 285.75	Grease	305
KF26UG15K1850NXX	UNITISED	11.5	1850	Ø127x15	M22x1.5x94	10 - 285.75	Grease	310
KF26UG15L1850NXX	UNITISED	11.5	1850	Ø127x15	M22x1.5x123	10 - 285.75	Grease	310
KF26UG15K1820NXX	UNITISED	11.5	1820	Ø127x15	M22x1.5x94	10 – 335	Grease	305
KF26UG15L1820NXX	UNITISED	11.5	1820	Ø127x15	M22x1.5x123	10 – 335	Grease	305
KF26UG15K1850NXX	UNITISED	11.5	1850	Ø127x15	M22x1.5x94	10 – 335	Grease	310
KF26UG15L1850NXX	UNITISED	11.5	1850	Ø127x15	M22x1.5x123	10 - 335	Grease	310

* Contact FKH for optional features.

KF23 Series

Axle – Disc Brake



Axle Standard Features

- Beam – Round 127 x 15mm one piece forged, with swaged spindles and induction hardened bearing journals.
- Brake Type – WABCO PAN 22 Ø430mm Rotor
- ABS Ready – Pole ring & sensor block fitted.
- Lube – Grease
- SARN: 30241, CTA-030241

Optional Features

- ABS sensors and leads

Optional Features - *Sold Separately*

- Hubo
- Oil
- Cambering

Axle Model	Spindle	Axle Capacity (Ton)	Track (mm)	Axle Beam (mm)	Stud	PCD	Lubrication	Weight Approx (kg)
KF23BG15L1850PXX	FP	13	1850	Ø127x19	M22x1.5x123	10 - 285.75	Grease	345
KF23CBF15L1850PXX	FP	11.5	1850	Ø127x19	M22x1.5x123	10 - 285.75	Semi fluid	345
KF23CBF18L1850PXX	FP	11.5	1850	Ø127x19	M22x1.5x123	10 - 285.75	Semi fluid	315

* Contact FKH for optional features.

KF36 Series

Axle – Disc Brake



Axle Standard Features

- Beam – Round 127 x 15mm one piece forged, with swaged spindles and induction hardened bearing journals.
- Brake Type – WABCO PAN 19 Ø377mm Rotor
- ABS Ready – Pole ring & sensor block fitted.
- Lube – Grease
- SARN: 30241, CTA-030241

Optional Features

- ABS sensors and leads

Optional Features - Sold Separately

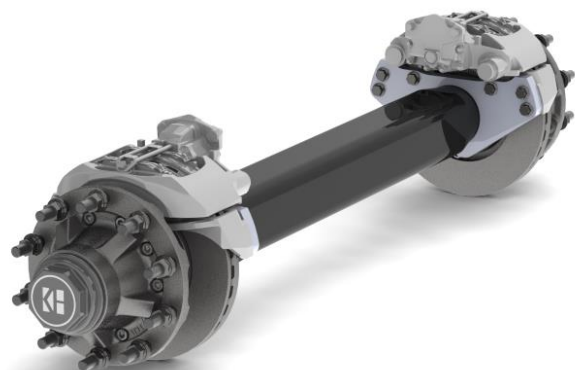
- Hubo
- Oil
- Cambering

Axle Model	Spindle	Axle Capacity (Ton)	Track (mm)	Axle Beam (mm)	Stud	PCD	Lubrication	Weight Approx (kg)
KF36AG19L1820NXX	FN	11.5	1820	Ø127x15	M22x1.5x123	8 – 275	Grease	290
KF36AG19L1850NXX	FN	11.5	1850	Ø127x15	M22x1.5x123	8 – 275	Grease	295
KF36UG19L1820NXX	UNITISED	11.5	1820	Ø127x15	M22x1.5x123	8 – 275	Grease	290
KF36UG19L1850NXX	UNITISED	11.5	1850	Ø127x15	M22x1.5x123	8 – 275	Grease	295

* Contact FKH for optional features.

FB24 Series

Axle – Disc Brake



Axle Standard Features

- Beam – Square 150 x 18mm one piece forged, with swaged spindles and induction hardened bearing journals.
- Brake Type – WABCO PAN 22 Ø430mm Rotor
- ABS Ready – Pole ring & sensor block fitted.
- Lube – Grease
- SARN: 50381, CTA-050381**

Optional Features

- ABS sensors and leads

Optional Features - Sold Separately

- Hubo
- Oil
- Cambering

Axle Model	Spindle	Axle Capacity (Ton)	Track (mm)	Axle Beam (mm)	Stud	PCD	Lubrication	Weight Approx (kg)
FB24DB-011	FN-HD	17**	1850	□150x18	M24x1.5x123	10 – 335	Grease	390
FB24DB-012	FN-HD	17**	1850	□150x18	M24x1.5x123	10 – 335	Grease	390

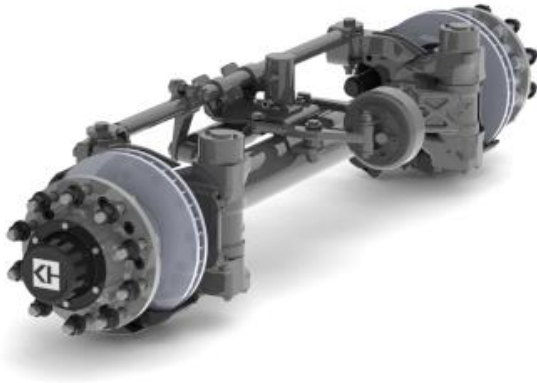
* Contact FKH for optional features.

** 17t for off road use only, limited to 13t per CTA-050381.

***FB24DB-011 only suitable with overslung suspension. FB24DB-012 only suitable with underslung suspension.

KSS13 Series

Axle – Disc Brake



Axle Standard Features

- Beam – Round 127 x 25mm self steer, with induction hardened bearing journals.
- Brake Type – WABCO PAN 22 Ø430mm Rotor
- ABS Ready – Pole ring & sensor block fitted.
- Lube – Grease
- Steer angle – 12°
- SARN: 30241, CTA-030241

Optional Features

- ABS sensors and leads

Optional Features - *Sold Separately*

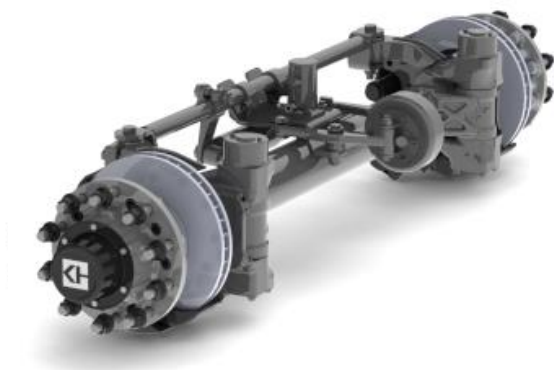
- Hubo
- Oil

Axle Model	Spindle	Axle Capacity (Ton)	Track (mm)	Axle Beam (mm)	Stud	PCD	Lubrication	Weight Approx (kg)
KSS13BG15L1850SXX	FP	10.0	1850	Ø127x25	M22x1.5x123	10 - 285.75	Grease	N/A

* Contact FKH for optional features.

KSS16 Series

Axle – Disc Brake



Axle Standard Features

- Beam – Round 127 x 25mm self steer, with induction hardened bearing journals.
- Brake Type – WABCO PAN 19 Ø377mm Rotor
- ABS Ready – Pole ring & sensor block fitted.
- Lube – Grease
- Steer Angle – 12°
- SARN: 30241, CTA-030241

Optional Features

- ABS sensors and leads

Optional Features - *Sold Separately*

- Hubo
- Oil

Axle Model	Spindle	Axle Capacity (Ton)	Track (mm)	Axle Beam (mm)	Stud	PCD	Lubrication	Weight Approx (kg)
KSS16AG15L1850SXX	FN	10.0	1850	Ø127x25	M22x1.5x123	10 - 285.75	Grease	N/A
KSS16BG15L1850SXX	FP	10.0	1850	Ø127x25	M22x1.5x123	10 - 285.75	Grease	N/A

* Contact FKH for optional features.

KFS16 Series

Axle – Disc Brake



Axle Standard Features

- Beam – Round 127 x 25mm self steer, with induction hardened bearing journals.
- Brake Type – WABCO PAN 19 Ø377mm Rotor
- ABS Ready – Pole ring & sensor block fitted.
- Lube – Grease
- Steer Angle – 12°
- SARN: 30241, CTA-030241

Optional Features

- ABS sensors and leads

Optional Features - Sold Separately

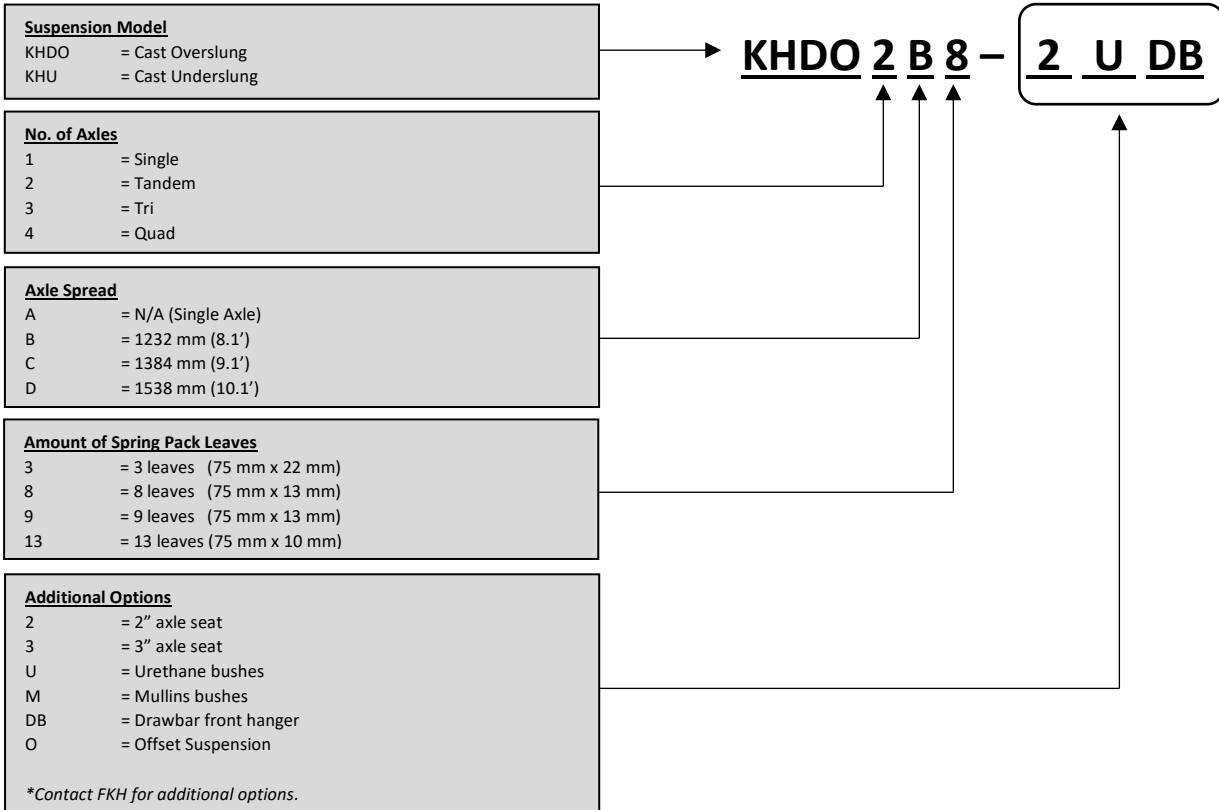
- Hubo

Axle Model	Spindle	Axle Capacity (Ton)	Track (mm)	Axle Beam (mm)	Stud	PCD	Lubrication	Weight Approx (kg)
KFS16UG15L1850SXX	UNITISED	10.0	1850	Ø127x25	M22x1.5x123	10 - 285.75	Grease	N/A

* Contact FKH for optional features.

CAST SUSPENSION STOCK CODE CONFIGURATOR

EXPLANATION OF K HITCH CAST SUSPENSION CODE



KHDO Series

Suspension – Cast Mechanical



Suspension Standard Features

- Suited for Ø127mm round beam
- Rubber bushes
- 1" axle seats

Optional Features

- 2" axle seat
- 3" axle seat
- Drawbar front hanger
- Urethane bushes
- Mullins bushes
- Offset rocker/hanger

Suspension Model	No. of Axles	Nominal Spread (mm)	No. of Leaves	Approx Unladen Ride Height (mm)	Design Capacity per Axle (tonne)	CTA Capacity per Axle (tonne)	Spring Deflection (mm/tonne)	CTA	Weight Approx (kg)
KHDO1A3	1	N/A	3	345	11.5	10	2.6 to 3.6	26585	160
KHDO1A8	1	N/A	8	360	11.5	10	2.9 to 3.9	26585	180
KHDO1A9	1	N/A	9	380	11.5	10	2.5 to 3.5	26585	205
KHDO1A13	1	N/A	13	375	11.5	10	2.2 to 3.2	26585	-
KHDO2B3	2	1232	3	355	11.5	10	1.3 to 1.9	17051	330
KHDO2B8	2	1232	8	375	11.5	10	1.5 to 2.0	17051	380
KHDO2B9	2	1232	9	388	11.5	10	1.2 to 1.7	17051	420
KHDO2B13	2	1232	13	375	11.5	10	1.1 to 1.6	17051	423
KHDO2C3	2	1384	3	355	11.5	10	1.3 to 1.9	17051	330
KHDO2C8	2	1384	8	370	11.5	10	1.5 to 2.0	17051	395
KHDO2C9	2	1384	9	385	11.5	10	1.2 to 1.7	17051	420
KHDO2C13	2	1384	13	375	11.5	10	1.1 to 1.6	17051	425
KHDO2D3	2	1538	3	355	11.5	10	1.3 to 1.9	17051	355
KHDO2D8	2	1538	8	370	11.5	10	1.5 to 2.0	17051	400
KHDO2D9	2	1538	9	380	11.5	10	1.2 to 1.7	17051	425
KHDO2D13	2	1538	13	373	11.5	10	1.1 to 1.6	17051	438
KHDO3B3	3	1232	3	366	11.5	10	0.9 to 1.2	26584	485
KHDO3B8	3	1232	8	380	11.5	10	1.0 to 1.3	26584	475
KHDO3B9	3	1232	9	394	11.5	10	0.8 to 1.2	26584	630
KHDO3B13	3	1232	13	384	11.5	10	0.7 to 1.1	26584	635
KHDO3C3	3	1384	3	355	11.5	10	0.9 to 1.2	26584	530
KHDO3C8	3	1384	8	375	11.5	10	1.0 to 1.3	26584	615
KHDO3C9	3	1384	9	390	11.5	10	0.8 to 1.2	26584	670
KHDO3C13	3	1384	13	375	11.5	10	0.7 to 1.1	26584	658
KHDO3D3	3	1538	3	360	11.5	10	0.9 to 1.2	26584	580
KHDO3D8	3	1538	8	375	11.5	10	1.0 to 1.3	26584	635
KHDO3D9	3	1538	9	385	11.5	10	0.8 to 1.2	26584	695
KHDO3D13	3	1538	13	375	11.5	10	0.7 to 1.1	26584	684
KHDO4B3	4	1232	3	-	11.5	10	0.7 to 0.9	48983	-
KHDO4B8	4	1232	8	378	11.5	10	0.7 to 1.0	48983	780
KHDO4B9	4	1232	9	397	11.5	10	0.6 to 0.9	48983	850
KHDO4B13	4	1232	13	-	11.5	10	0.5 to 0.8	48983	-
KHDO4C3	4	1384	3	-	11.5	10	0.7 to 0.9	48983	-
KHDO4C8	4	1384	8	-	11.5	10	0.7 to 1.0	48983	-
KHDO4C9	4	1384	9	-	11.5	10	0.6 to 0.9	48983	-
KHDO4C13	4	1384	13	-	11.5	10	0.5 to 0.8	48983	-
KHDO4D3	4	1538	3	360	11.5	10	0.7 to 0.9	48983	750
KHDO4D8	4	1538	8	375	11.5	10	0.7 to 1.0	48983	875
KHDO4D9	4	1538	9	385	11.5	10	0.6 to 0.9	48983	950
KHDO4D13	4	1538	13	378	11.5	10	0.5 to 0.8	48983	930

* Contact FKH for optional features.

**Blank (-) information is available upon customers request.

KHU Series

Suspension – Cast Mechanical



Suspension Standard Features

- Suited for Ø127mm round beam
- Rubber bushes
- 1" axle seats

Optional Features

- 2" axle seat
- 3" axle seat
- Drawbar front hanger
- Urethane bushes
- Mullins bushes
- Offset rocker/hanger

Suspension Model	No. of Axles	Nominal Spread (mm)	No. of Leaves	Approx Unladen Ride Height (mm)	Design Capacity per Axle (tonne)	CTA Capacity per Axle (tonne)	Spring Deflection (mm/tonne)	CTA	Weight Approx (kg)
KHU1A3	1	N/A	3	215	11.5	10	2.6 to 3.6	26585	148
KHU1A8	1	N/A	8	210	11.5	10	2.9 to 3.9	26585	195
KHU1A9	1	N/A	9	205	11.5	10	2.5 to 3.5	26585	208
KHU1A13	1	N/A	13	160	11.5	10	2.2 to 3.2	26585	203
KHU2B3	2	1232	3	219	11.5	10	1.3 to 1.9	17051	320
KHU2B8	2	1232	8	206	11.5	10	1.5 to 2.0	17051	400
KHU2B9	2	1232	9	201	11.5	10	1.2 to 1.7	17051	430
KHU2B13	2	1232	13	171	11.5	10	1.1 to 1.6	17051	425
KHU2C3	2	1384	3	214	11.5	10	1.3 to 1.9	17051	350
KHU2C8	2	1384	8	201	11.5	10	1.5 to 2.0	17051	420
KHU2C9	2	1384	9	196	11.5	10	1.2 to 1.7	17051	455
KHU2C13	2	1384	13	165	11.5	10	1.1 to 1.6	17051	-
KHU2D3	2	1538	3	219	11.5	10	1.3 to 1.9	17051	350
KHU2D8	2	1538	8	206	11.5	10	1.5 to 2.0	17051	430
KHU2D9	2	1538	9	200	11.5	10	1.2 to 1.7	17051	470
KHU2D13	2	1538	13	165	11.5	10	1.1 to 1.6	17051	-
KHU3B3	3	1232	3	222	11.5	10	0.9 to 1.2	26584	490
KHU3B8	3	1232	8	204	11.5	10	1.0 to 1.3	26584	610
KHU3B9	3	1232	9	204	11.5	10	0.8 to 1.2	26584	655
KHU3B13	3	1232	13	177	11.5	10	0.7 to 1.1	26584	645
KHU3C3	3	1384	3	216	11.5	10	0.9 to 1.2	26584	540
KHU3C8	3	1384	8	198	11.5	10	1.0 to 1.3	26584	650
KHU3C9	3	1384	9	198	11.5	10	0.8 to 1.2	26584	705
KHU3C13	3	1384	13	170	11.5	10	0.7 to 1.1	26584	690
KHU3D3	3	1538	3	222	11.5	10	0.9 to 1.2	26584	560
KHU3D8	3	1538	8	210	11.5	10	1.0 to 1.3	26584	680
KHU3D9	3	1538	9	204	11.5	10	0.8 to 1.2	26584	730
KHU3D13	3	1538	13	175	11.5	10	0.7 to 1.1	26584	713
KHU4B3	4	1232	3	-	11.5	10	0.7 to 0.9	48983	-
KHU4B8	4	1232	8	206	11.5	10	0.7 to 1.0	48983	802
KHU4B9	4	1232	9	206	11.5	10	0.6 to 0.9	48983	880
KHU4B13	4	1232	13	-	11.5	10	0.5 to 0.8	48983	-
KHU4C3	4	1384	3	-	11.5	10	0.7 to 0.9	48983	-
KHU4C8	4	1384	8	-	11.5	10	0.7 to 1.0	48983	-
KHU4C9	4	1384	9	200	11.5	10	0.6 to 0.9	48983	953
KHU4C13	4	1384	13	-	11.5	10	0.5 to 0.8	48983	-
KHU4D3	4	1538	3	225	11.5	10	0.7 to 0.9	48983	765
KHU4D8	4	1538	8	205	11.5	10	0.7 to 1.0	48983	902
KHU4D9	4	1538	9	205	11.5	10	0.6 to 0.9	48983	982
KHU4D13	4	1538	13	175	11.5	10	0.5 to 0.8	48983	970

* Contact FKH for optional features.

**Blank (-) information is available upon customers request.

K HITCH FABRICATED SUSPENSION STOCK CODE CONFIGURATOR

EXPLANATION OF K HITCH FABRICATED SUSPENSION CODE

KH68 O 2 B 8 - 2 U - S F

Suspension Model
KH68 = Fabricated

Slung Style
O = Overslung

No. of Axles
1 = Single
2 = Tandem
3 = Tri
4 = Quad

Axle Spread
A = N/A (Single Axle)
B = 1232 mm (8.1')
C = 1384 mm (9.1')
D = 1538 mm (10.1')

Amount of Spring Pack Leaves
3 = 3 leaves (75 mm x 22 mm)
8 = 8 leaves (75 mm x 13 mm)
9 = 9 leaves (75 mm x 13 mm)
13 = 13 leaves (75 mm x 10 mm)

Additional Options
2 = 2" axle seat
3 = 3" axle seat
U = Urethane bushes
M = Mullins bushes
O = Offset rocker/hanger
(Leave blank if no options required)
**Contact FKH for additional options.*

Packer Thickness
S = 25mm

Hanger Flange
F = Flange

KH680 Series

Suspension – Fabricated Mechanical



Suspension Standard Features

- Suited for Ø127mm round beam
- Rubber bushes
- 1" axle seats

Optional Features

- 2" axle seat
- 3" axle seat
- Urethane bushes
- Mullins bushes
- Offset rocker/hanger

Suspension Model	No. of Axles	Nominal Spread (mm)	No. of Leaves	Approx Unladen Ride Height (mm)	Design Capacity per Axle (tonne)	CTA Capacity per Axle (tonne)	Spring Deflection (mm/tonne)	CTA	Weight Approx (kg)
KH6801A3-SF	1	N/A	3	-	11.5	10	-	26585	-
KH6801A8-SF	1	N/A	8	-	11.5	10	-	26585	-
KH6801A9-SF	1	N/A	9	-	11.5	10	-	26585	-
KH6801A13-SF	1	N/A	13	-	11.5	10	-	26585	-
KH6802B3-SF	2	1232	3	-	11.5	10	-	17051	-
KH6802B8-SF	2	1232	8	-	11.5	10	-	17051	-
KH6802B9-SF	2	1232	9	-	11.5	10	-	17051	-
KH6802B13-SF	2	1232	13	-	11.5	10	-	17051	-
KH6802C3-SF	2	1384	3	-	11.5	10	-	17051	-
KH6802C8-SF	2	1384	8	-	11.5	10	-	17051	-
KH6802C9-SF	2	1384	9	-	11.5	10	-	17051	-
KH6802C13-SF	2	1384	13	-	11.5	10	-	17051	-
KH6802D3-SF	2	1538	3	-	11.5	10	-	17051	-
KH6802D8-SF	2	1538	8	-	11.5	10	-	17051	-
KH6802D9-SF	2	1538	9	-	11.5	10	-	17051	-
KH6802D13-SF	2	1538	13	-	11.5	10	-	17051	-
KH6803B3-SF	3	1232	3	-	11.5	10	-	26584	-
KH6803B8-SF	3	1232	8	-	11.5	10	-	26584	-
KH6803B9-SF	3	1232	9	-	11.5	10	-	26584	-
KH6803B13-SF	3	1232	13	-	11.5	10	-	26584	-
KH6803C3-SF	3	1384	3	-	11.5	10	-	26584	-
KH6803C8-SF	3	1384	8	-	11.5	10	-	26584	-
KH6803C9-SF	3	1384	9	-	11.5	10	-	26584	-
KH6803C13-SF	3	1384	13	-	11.5	10	-	26584	-
KH6803D3-SF	3	1538	3	-	11.5	10	-	26584	-
KH6803D8-SF	3	1538	8	-	11.5	10	-	26584	-
KH6803D9-SF	3	1538	9	-	11.5	10	-	26584	-
KH6803D13-SF	3	1538	13	-	11.5	10	-	26584	-
KH6804B3-SF	4	1232	3	-	11.5	10	-	N.A	-
KH684B8-SF	4	1232	8	-	11.5	10	-	N.A	-
KH684B9-SF	4	1232	9	-	11.5	10	-	N.A	-
KH684B13-SF	4	1232	13	-	11.5	10	-	N.A	-
KH684C3-SF	4	1384	3	-	11.5	10	-	N.A	-
KH684C8-SF	4	1384	8	-	11.5	10	-	N.A	-
KH684C9-SF	4	1384	9	-	11.5	10	-	N.A	-
KH684C13-SF	4	1384	13	-	11.5	10	-	N.A	-
KH684D3-SF	4	1538	3	-	11.5	10	-	N.A	-
KH684D8-SF	4	1538	8	-	11.5	10	-	N.A	-
KH684D9-SF	4	1538	9	-	11.5	10	-	N.A	-
KH684D13-SF	4	1538	13	-	11.5	10	-	N.A	-

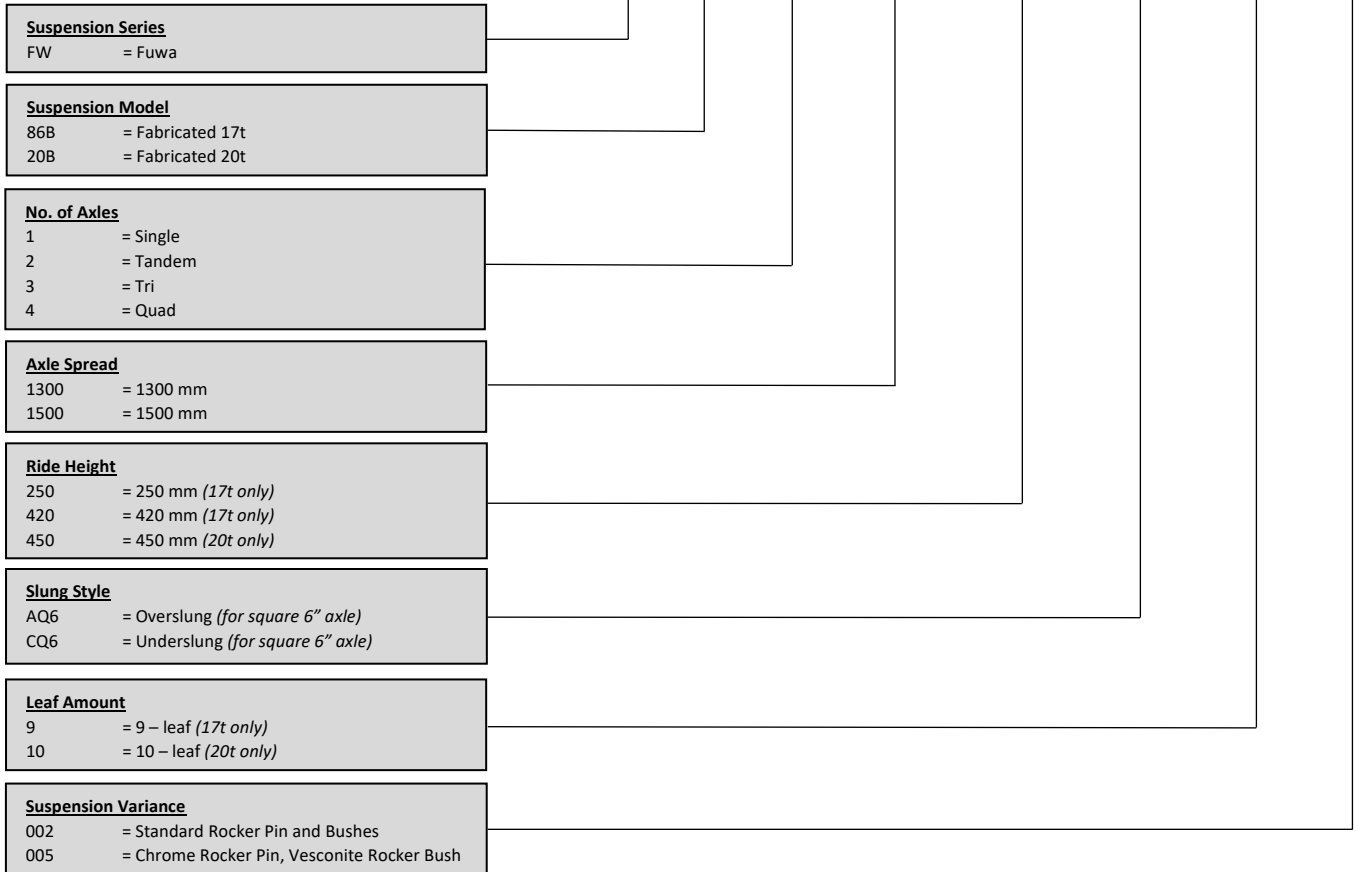
* Contact FKH for optional features.

**Blank (-) information is available upon customers request.

FUWA FABRICATED SUSPENSION STOCK CODE CONFIGURATOR

EXPLANATION OF FUWA FABRICATED SUSPENSION CODE

FW 20B . 3 / 1300 / 450 / AQ6 / 10 - 002



FW86 Series

Suspension – Fabricated Mechanical



Suspension Standard Features

- Suited for 6" square beam
- Chrome rocker pin
- Vesconite rocker bush

Suspension Model	No. of Axles	Nominal Spread (mm)	No. of Leaves	Approx Unladen Ride Height (mm)	Capacity per Axle (tonne)	Spring Deflection (mm/tonne)	CTA	Weight Approx (kg)
FW86B.1/1300/250/CQ6/10-005	1	N/A	9	250	17	1.65	N.A	-
FW86B.2/1300/250/CQ6/10-005	2	1300	9	250	17	0.83	N.A	-
FW86B.2/1500/250/CQ6/10-005	2	1500	9	250	17	0.83	N.A	-
FW86B.3/1300/250/CQ6/10-005	3	1300	9	250	17	0.55	N.A	-
FW86B.3/1500/250/CQ6/10-005	3	1500	9	250	17	0.55	N.A	-
FW86B.4/1300/250/CQ6/10-005	4	1300	9	250	17	0.42	N.A	-
FW86B.4/1500/250/CQ6/10-005	4	1500	9	250	17	0.42	N.A	-
FW86B.1/1300/450/AQ6/10-005	1	N/A	9	420	17	1.65	N.A	-
FW86B.2/1300/450/AQ6/10-005	2	1300	9	420	17	0.83	N.A	-
FW86B.2/1500/450/AQ6/10-005	2	1500	9	420	17	0.83	N.A	-
FW86B.3/1300/450/AQ6/10-005	3	1300	9	420	17	0.55	N.A	-
FW86B.3/1500/450/AQ6/10-005	3	1500	9	420	17	0.55	N.A	-
FW86B.4/1300/450/AQ6/10-005	4	1300	9	420	17	0.42	N.A	-
FW86B.4/1500/450/AQ6/10-005	4	1500	9	420	17	0.42	N.A	-

* Contact FKH for optional features.

**Blank (-) information is available upon customers request.

FW20 Series

Suspension – Fabricated Mechanical



Suspension Standard Features

- Suited for 6" square beam
- Rubber bushes (X shape groove)

Suspension Model	No. of Axles	Nominal Spread (mm)	No. of Leaves	Approx Unladen Ride Height (mm)	Capacity per Axle (tonne)	Spring Deflection (mm/tonne)	CTA	Weight Approx (kg)
FW20B.1/1300/450/AQ6/10-002	1	N/A	10	450	20	-	N.A	-
FW20B.2/1300/450/AQ6/10-002	2	1300	10	450	20	-	N.A	-
FW20B.2/1500/450/AQ6/10-002	2	1500	10	450	20	-	N.A	-
FW20B.3/1300/450/AQ6/10-002	3	1300	10	450	20	-	N.A	-
FW20B.3/1500/450/AQ6/10-002	3	1500	10	450	20	-	N.A	-
FW20B.4/1300/450/AQ6/10-002	4	1300	10	450	20	-	N.A	-
FW20B.4/1500/450/AQ6/10-002	4	1500	10	450	20	-	N.A	-

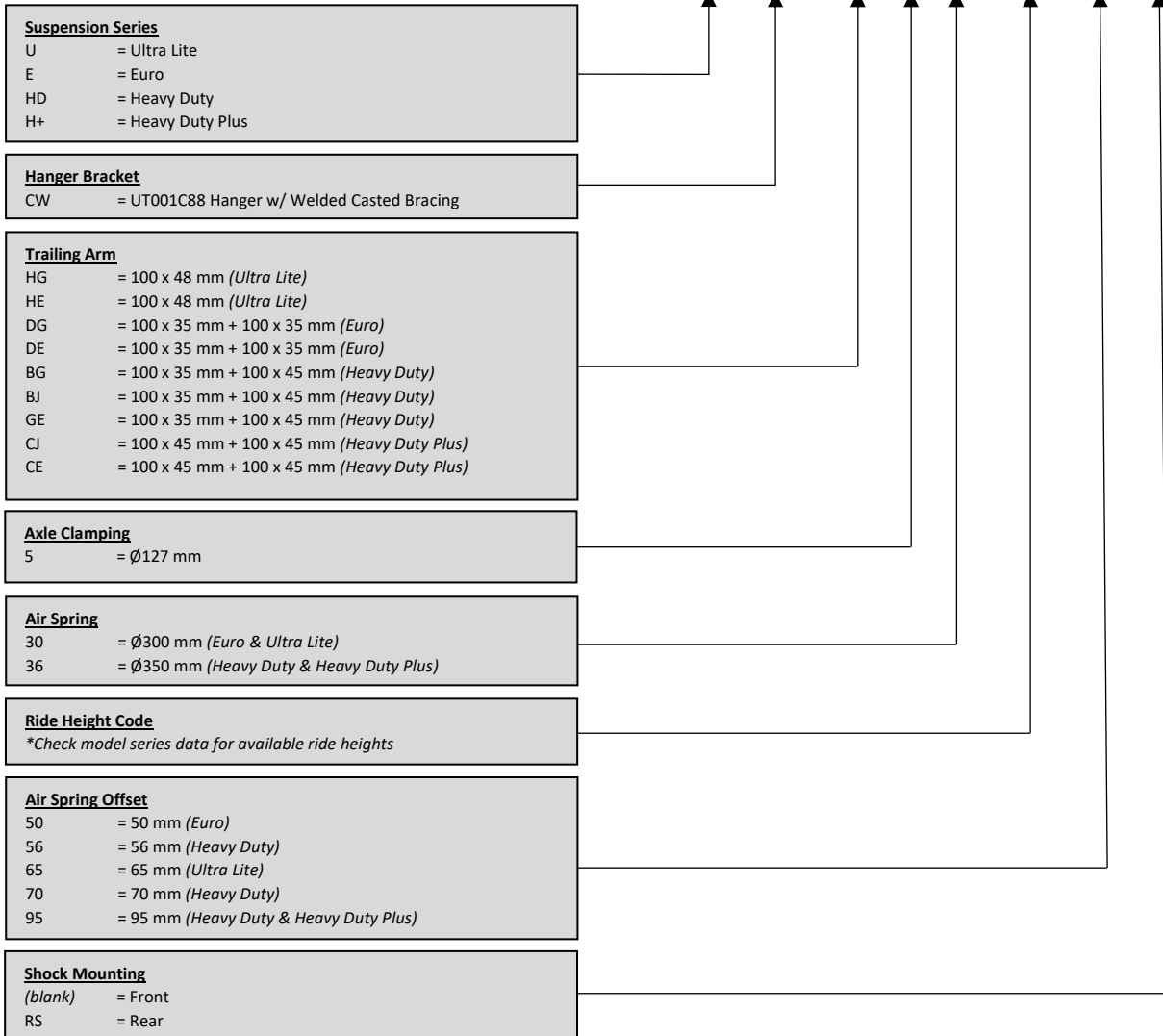
* Contact FKH for optional features.

**Blank (-) information is available upon customers request.

WEWELER SUSPENSION STOCK CODE CONFIGURATOR

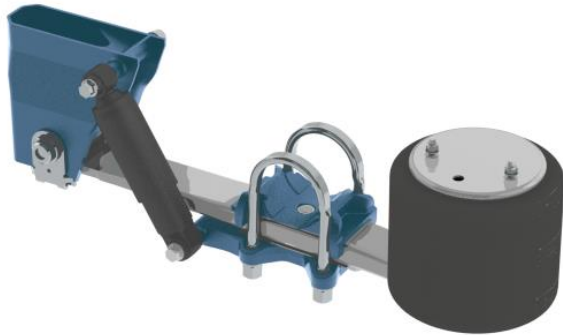
EXPLANATION OF WEWELER AIR SUSPENSION STOCK CODE

HD.CW.BG.5.36.195.56.RS



Ultra Lite Series

Suspension – Weweler Air



Suspension Standard Features

- Suited for $\varnothing 127$ mm beam

Optional Features – Sold Separately

- Axle Lift Kit

CTA Information

Single	- CTA-039976
Tandem	- CTA-039977
Tri	- CTA-039978
Quad	- CTA-039979

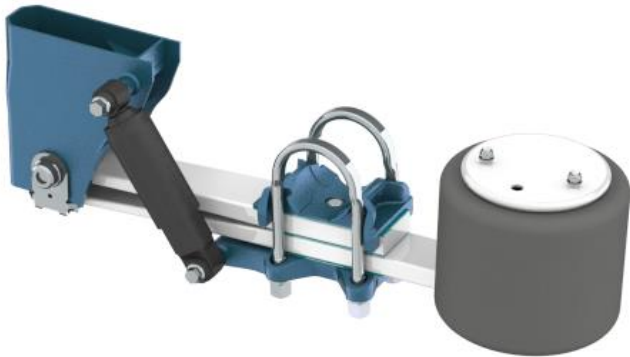
Suspension Stock Code	Nominal Ride Height (mm)	Ride Height Range (mm)	Spring Style	RFS Certificate Number	Shock Mount Position	Capacity per Axle (tonne)	Weight Approx (kg)	Weweler Suspension Model
U.CW.HG.5.30.230.65	250	220-280	Under	RF2049	Front	9	156	HD.CW.HG.5.30.250.65.S
U.CW.HG.5.30.275.65	275	245-310	Under	RF2049	Front	9	160	HD.CW.HG.5.30.275.65.S
U.CW.HG.5.30.315.65	325	295-355	Under	RF2049	Front	9	165	HD.CW.HG.5.30.325.65.S
U.CW.HE.5.30.375.65	375	345-405	Over	RF2049	Front	9	155	HD.CW.HE.5.30.375.65.S
U.CW.HE.5.30.400.65	400	370-430	Over	RF2049	Front	9	160	HD.CW.HE.5.30.400.65.S
U.CW.HE.5.30.425.65	425	395-455	Over	RF2049	Front	9	162	HD.CW.HE.5.30.425.65.S
U.CW.HE.5.30.450.65	450	420-480	Over	RF2049	Front	9	164	HD.CW.HE.5.30.450.65.S
U.CW.HE.5.30.475.65	475	445-505	Over	RF2049	Front	9	167	HD.CW.HE.5.30.475.65.S
U.CW.HG.5.30.230.65.RS	250	220-280	Under	RF2049	Rear	9	174	HD.CW.HG.5.30.250.65.RS
U.CW.HG.5.30.305.65.RS	325	295-355	Under	RF2049	Rear	9	183	HD.CW.HG.5.30.325.65.RS

* Contact FKH for optional features.

** The nominal ride height is to be used for all suspension models. Contact FKH for information regarding ranged ride heights.

Euro Series

Suspension – Weweler Air



Suspension Standard Features

- Suited for \varnothing 127 mm beam

Optional Features – Sold Separately

- Axle Lift Kit

CTA Information

Single	- CTA-039976
Tandem	- CTA-039977
Tri	- CTA-039978
Quad	- CTA-039979

Suspension Stock Code	Nominal Ride Height (mm)	Ride Height Range (mm)	Spring Style	RFS Certificate Number	Shock Mount Position	Capacity per Axle (tonne)	Weight Approx (kg)	Weweler Suspension Model
E.CW.DG.5.30.230.50	235	205-270	Under	RF2049	Front	9	185	HD.CW.DG.5.30.235.50.S
E.CW.DG.5.30.285.50	285	255-320	Under	RF2049	Front	9	191	HD.CW.DG.5.30.285.50.S
E.CW.DG.5.30.315.50	310	280-345	Under	RF2049	Front	9	194	HD.CW.DG.5.30.310.50.S
E.CW.DE.5.30.375.50	380	350-415	Over	RF2049	Front	9	183	HD.CW.DE.5.30.380.50.S
E.CW.DE.5.30.400.50	405	375-440	Over	RF2049	Front	9	187	HD.CW.DE.5.30.405.50.S
E.CW.DE.5.30.425.50	430	400-465	Over	RF2049	Front	9	190	HD.CW.DE.5.30.430.50.S
E.CW.DE.5.30.450.50	455	425-490	Over	RF2049	Front	9	192	HD.CW.DE.5.30.455.50.S
E.CW.DE.5.30.475.50	480	450-515	Over	RF2049	Front	9	195	HD.CW.DE.5.30.480.50.S
E.CW.DG.5.30.230.50.RS	235	205-270	Under	RF2049	Rear	9	202	HD.CW.DG.5.30.235.50.RS
E.CW.DG.5.30.280.50.RS	285	230-295	Under	RF2049	Rear	9	211	HD.CW.DG.5.30.285.50.RS
E.CW.DG.5.30.305.50.RS	310	280-345	Under	RF2049	Rear	9	212	HD.CW.DG.5.30.310.50.RS

* Contact FKH for optional features.

** The nominal ride height is to be used for all suspension models. Contact FKH for information regarding ranged ride heights.

Heavy Duty Series

Suspension – Weweler Air



Suspension Standard Features

- Suited for Ø127 mm beam

Optional Features – Sold Separately

- Axle Lift Kit

CTA Information

Single	- CTA-039976
Tandem	- CTA-039977
Tri	- CTA-039978
Quad	- CTA-039979

Suspension Stock Code	Nominal Ride Height (mm)	Ride Height Range (mm)	Spring Style	RFS Certificate Number	Shock Mount Position	Capacity per Axle (tonne)	Weight Approx (kg)	Weweler Suspension Model
HD.CW.BG.5.36.195.56	200	170-210	Under	RF2049	Front	11	209	HD.CW.BG.5C.36.200.56.S
HD.CW.BJ.5.36.240.70	245	215-260	Under	RF2049	Front	11	215	HD.CW.BJ.5C.36.245.70.S
HD.CW.BJ.5.36.240.95	245	215-260	Under	RF2049	Front	11	215	HD.CW.BJ.5C.36.245.95.S
HD.CW.BJ.5.36.265.70	275	240-285	Under	RF2049	Front	11	224	HD.CW.BJ.5C.36.275.70.S
HD.CW.BJ.5.36.265.95	275	240-285	Under	RF2049	Front	11	224	HD.CW.BJ.5C.36.275.95.S
HD.CW.BJ.5.36.305.70	300	270-310	Under	RF2049	Front	11	227	HD.CW.BJ.5C.36.300.70.S
HD.CW.BJ.5.36.305.95	300	270-310	Under	RF2049	Front	11	227	HD.CW.BJ.5C.36.300.95.S
HD.CW.GE.5.36.390.70	395	365-405	Over	RF2049	Front	11	214	HD.CW.GE.5C.36.395.70.S
HD.CW.GE.5.36.390.95	395	365-405	Over	RF2049	Front	11	214	HD.CW.GE.5C.36.395.95.S
HD.CW.GE.5.36.415.70	420	390-430	Over	RF2049	Front	11	217	HD.CW.GE.5C.36.420.70.S
HD.CW.GE.5.36.415.95	420	390-430	Over	RF2049	Front	11	217	HD.CW.GE.5C.36.420.95.S
HD.CW.GE.5.36.440.70	445	415-455	Over	RF2049	Front	11	219	HD.CW.GE.5C.36.445.70.S
HD.CW.GE.5.36.440.95	445	415-455	Over	RF2049	Front	11	219	HD.CW.GE.5C.36.445.95.S
HD.CW.BG.5.36.195.56.RS	200	170-210	Under	RF2049	Rear	11	227	HD.CW.BG.5C.36.200.56.RS
HD.CW.BJ.5.36.240.70.RS	245	215-260	Under	RF2049	Rear	11	233	HD.CW.BJ.5C.36.245.70.RS
HD.CW.BJ.5.36.240.95.RS	245	215-260	Under	RF2049	Rear	11	233	HD.CW.BJ.5C.36.245.95.RS
HD.CW.BJ.5.36.285.70.RS	285	255-295	Under	RF2049	Rear	11	242	HD.CW.BJ.5C.36.285.70.RS
HD.CW.BJ.5.36.285.95.RS	285	255-295	Under	RF2049	Rear	11	242	HD.CW.BJ.5C.36.285.95.RS
HD.CW.BJ.5.36.315.70.RS	315	285-325	Under	RF2049	Rear	11	246	HD.CW.BJ.5C.36.315.70.RS
HD.CW.BJ.5.36.315.95.RS	315	285-325	Under	RF2049	Rear	11	246	HD.CW.BJ.5C.36.315.95.RS
HD.CW.GE.5.36.390.70.RS	395	365-405	Over	RF2049	Rear	11	245	HD.CW.GE.5C.36.395.70.RS
HD.CW.GE.5.36.390.95.RS	395	365-405	Over	RF2049	Rear	11	245	HD.CW.GE.5C.36.395.95.RS
HD.CW.GE.5.36.415.70.RS	420	390-430	Over	RF2049	Rear	11	248	HD.CW.GE.5C.36.420.70.RS
HD.CW.GE.5.36.415.95.RS	420	390-430	Over	RF2049	Rear	11	248	HD.CW.GE.5C.36.420.95.RS
HD.CW.GE.5.36.440.70.RS	445	415-455	Over	RF2049	Rear	11	251	HD.CW.GE.5C.36.445.70.RS
HD.CW.GE.5.36.440.95.RS	445	415-455	Over	RF2049	Rear	11	251	HD.CW.GE.5C.36.445.95.RS

* Contact FKH for optional features.

** The nominal ride height is to be used for all suspension models. Contact FKH for information regarding ranged ride heights.

Heavy Duty Plus Series

Suspension – Weweler Air



Suspension Standard Features

- Suited for Ø127 mm beam

Optional Features – Sold Separately

- Axle Lift Kit

CTA Information

Single	- CTA-039976
Tandem	- CTA-039977
Tri	- CTA-039978
Quad	- CTA-039979

Suspension Stock Code	Nominal Ride Height (mm)	Ride Height Range (mm)	Spring Style	RFS Certificate Number	Shock Mount Position	Capacity per Axle (tonne)	Weight Approx (kg)	Weweler Suspension Model
H+.CW.CJ.5.36.240.70	235	205-250	Under	RF2049	Front	13	223	HD.CW.CJ.5C.36.235.70.S
H+.CW.CJ.5.36.240.95	235	205-250	Under	RF2049	Front	13	223	HD.CW.CJ.5C.36.235.95.S
H+.CW.CJ.5.36.265.70	265	235-275	Under	RF2049	Front	13	232	HD.CW.CJ.5C.36.265.70.S
H+.CW.CJ.5.36.265.95	265	235-275	Under	RF2049	Front	13	232	HD.CW.CJ.5C.36.265.95.S
H+.CW.CJ.5.36.290.70	290	260-300	Under	RF2049	Front	13	235	HD.CW.CJ.5C.36.290.70.S
H+.CW.CJ.5.36.290.95	290	260-300	Under	RF2049	Front	13	235	HD.CW.CJ.5C.36.290.95.S
H+.CW.CE.5.36.390.70	395	365-405	Over	RF2049	Front	13	225	HD.CW.CE.5C.36.395.70.S
H+.CW.CE.5.36.390.95	395	365-405	Over	RF2049	Front	13	225	HD.CW.CE.5C.36.395.95.S
H+.CW.CE.5.36.420.70	420	390-430	Over	RF2049	Front	13	228	HD.CW.CE.5C.36.420.70.S
H+.CW.CE.5.36.420.95	420	390-430	Over	RF2049	Front	13	228	HD.CW.CE.5C.36.420.95.S
H+.CW.CE.5.36.445.70	445	415-455	Over	RF2049	Front	13	231	HD.CW.CE.5C.36.445.70.S
H+.CW.CE.5.36.445.95	445	415-455	Over	RF2049	Front	13	231	HD.CW.CE.5C.36.445.95.S
H+.CW.CJ.5.36.240.70.RS	235	205-250	Under	RF2049	Rear	13	241	HD.CW.CJ.5C.36.235.70.RS
H+.CW.CJ.5.36.240.95.RS	235	205-250	Under	RF2049	Rear	13	241	HD.CW.CJ.5C.36.235.95.RS
H+.CW.CJ.5.36.275.70.RS	275	245-285	Under	RF2049	Rear	13	250	HD.CW.CJ.5C.36.275.70.RS
H+.CW.CJ.5.36.275.95.RS	275	245-285	Under	RF2049	Rear	13	250	HD.CW.CJ.5C.36.275.95.RS
H+.CW.CJ.5.36.305.70.RS	305	275-315	Under	RF2049	Rear	13	254	HD.CW.CJ.5C.36.305.70.RS
H+.CW.CJ.5.36.305.95.RS	305	275-315	Under	RF2049	Rear	13	254	HD.CW.CJ.5C.36.305.95.RS
H+.CW.CE.5.36.390.70.RS	395	365-405	Over	RF2049	Rear	13	257	HD.CW.CE.5C.36.395.70.RS
H+.CW.CE.5.36.390.95.RS	395	365-405	Over	RF2049	Rear	13	257	HD.CW.CE.5C.36.395.95.RS
H+.CW.CE.5.36.420.70.RS	420	390-430	Over	RF2049	Rear	13	259	HD.CW.CE.5C.36.420.70.RS
H+.CW.CE.5.36.420.95.RS	420	390-430	Over	RF2049	Rear	13	259	HD.CW.CE.5C.36.420.95.RS
H+.CW.CE.5.36.445.70.RS	445	415-455	Over	RF2049	Rear	13	262	HD.CW.CE.5C.36.445.70.RS
H+.CW.CE.5.36.445.95.RS	445	415-455	Over	RF2049	Rear	13	262	HD.CW.CE.5C.36.445.95.RS

* Contact FKH for optional features.

** The nominal ride height is to be used for all suspension models. Contact FKH for information regarding ranged ride heights.

MBS Series

Suspension – Weweler Air



Suspension Standard Features

- Suited for Ø146 mm groove beam
- Adjustable offset (25-50-65-90)
- Clamp Suspension

Optional Features – Sold Separately

- Axle Lift Kit

CTA Information

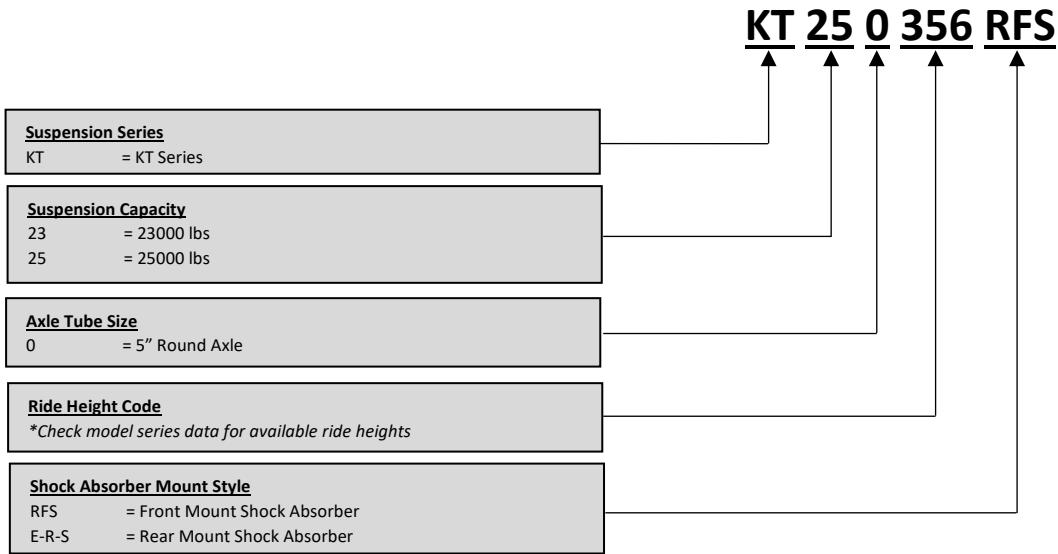
Single	- CTA-039976
Tandem	- CTA-039977
Tri	- CTA-039978
Quad	- CTA-039979

Suspension Stock Code	Min. RH w/ Lift Axle (mm)	Ride Height Range (mm)	Spring Style	RFS Certificate Number	Shock Mount Position	Capacity per Axle (tonne)	Weight Approx (kg)	Weweler Suspension Model
WUM21GR230P40	245	210-320	Under	RF2049	Front	9	132	MBS-111
WUM21GR275P40	275	240-320	Under	RF2049	Front	9	133	MBS-121
WUM21GR300P40	305	270-320	Under	RF2049	Front	9	133	MBS-131
WUM21GR345P40	345	310-410	Over	RF2049	Front	9	138	MBS-211
WUM21GR375P40	375	340-410	Over	RF2049	Front	9	138	MBS-221
WUM21GR395P40	395	360-410	Over	RF2049	Front	9	139	MBS-231

* Contact FKH for optional features.

K HITCH AIR SUSPENSION STOCK CODE CONFIGURATOR

EXPLANATION OF K HITCH KT AIR SUSPENSION STOCK CODE



KT230 Series

Suspension – K Hitch Air



Suspension Standard Features

- Suited for $\varnothing 127$ mm beam

Optional Features – Sold Separately

- Axle Lift Kit

CTA Information

Single	- CTA-030236
Tandem	- CTA-030237
Tri	- CTA-030238
Quad	- CTA-030239

Suspension Stock Code	Nominal Ride Height (mm)	Ride Height Range (mm)	Spring Style	RFS Certificate Number	Shock Mount Position	Capacity per Axle (tonne)	Weight Approx (kg)	K Hitch Suspension Model
KT230356-RFS	356	RF2037	Over	N.A	Front	9	149	KT-230T-356-E-F-H
KT230380-RFS	380	RF2037	Over	N.A	Front	9	149	KT-230T-380-E-F-H
KT230406-RFS	406	RF2037	Over	N.A	Front	9	153	KT-230T-406-E-F-H
KT230430-RFS	432	RF2037	Over	N.A	Front	9	153	KT-230T-432-E-F-H
KT230U-356-E-R-S	356	N.A	Over	N.A	Rear	9	145	KT-230T-356-E-R-H
KT230U-380-E-R-S	380	N.A	Over	N.A	Rear	9	145	KT-230T-380-E-R-H
KT230U-406-E-R-S	406	N.A	Over	N.A	Rear	9	149	KT-230T-406-E-R-H
KT230U-432-E-R-S	432	N.A	Over	N.A	Rear	9	149	KT-230T-432-E-R-H

* Contact FKH for optional features.

KT250 Series

Suspension – K Hitch Air



Suspension Standard Features

- Suited for Ø127 mm beam

Optional Features – Sold Separately

- Axle Lift Kit

CTA Information

Single	- CTA-030236
Tandem	- CTA-030237
Tri	- CTA-030238
Quad	- CTA-030239

Suspension Stock Code	Nominal Ride Height (mm)	Ride Height Range (mm)	Spring Style	RFS Certificate Number	Shock Mount Position	Capacity per Axle (tonne)	Weight Approx (kg)	K Hitch Suspension Model
KT250190-RFS	190	N.A	Under	RF2037	Front	11	162	KT-250U-190-E-F-H
KT250205-RFS	203	N.A	Under	RF2037	Front	11	162	KT-250U-203-E-F-H
KT250230-RFS	230	N.A	Under	RF2037	Front	11	164	KT-250U-230-E-F-H
KT250254-RFS	254	N.A	Under	RF2037	Front	11	164	KT-250U-254-E-F-H
KT250279-RFS	279	N.A	Under	RF2037	Front	11	169	KT-250U-279-E-F-H
KT250305-RFS	305	N.A	Under	RF2037	Front	11	169	KT-250U-305-E-F-H
KT250330-RFS	330	N.A	Under	RF2037	Front	11	177	KT-250U-330-E-F-H
KT250356-RFS	356	N.A	Under	RF2037	Front	11	177	KT-250U-356-E-F-H
KT250380-RFS	380	N.A	Over	RF2037	Front	11	151	KT-250T-380-E-F-H
KT250406-RFS	406	N.A	Over	RF2037	Front	11	156	KT-250T-406-E-F-H
KT250430-RFS	432	N.A	Over	RF2037	Front	11	157	KT-250T-432-E-F-H
KT250457-RFS	457	N.A	Over	RF2037	Front	11	162	KT-250T-457-E-F-H
KT250483-RFS	483	N.A	Over	RF2037	Front	11	162	KT-250T-483-E-F-H-K
KT250-190-E-R-S	190	N.A	Under	N.A	Rear	11	169	KT-250U-190-E-R-H
KT250-203-E-R-S	203	N.A	Under	N.A	Rear	11	169	KT-250U-203-E-R-H
KT250-230-E-R-S	230	N.A	Under	N.A	Rear	11	171	KT-250U-230-E-R-H
KT250-254-E-R-S	254	N.A	Under	N.A	Rear	11	171	KT-250U-254-E-R-H
KT250-279-E-R-S	279	N.A	Under	N.A	Rear	11	176	KT-250U-279-E-R-H
KT250-305-E-R-S	305	N.A	Under	N.A	Rear	11	177	KT-250U-305-E-R-H
KT250-330-E-R-S	330	N.A	Under	N.A	Rear	11	183	KT-250U-330-E-R-H
KT250-356-E-R-S	356	N.A	Under	N.A	Rear	11	185	KT-250U-356-E-R-H
KT250-380-E-R-S	380	N.A	Over	N.A	Rear	11	157	KT-250T-380-E-R-H
KT250-406-E-R-S	406	N.A	Over	N.A	Rear	11	161	KT-250T-406-E-R-H
KT250-432-E-R-S	432	N.A	Over	N.A	Rear	11	164	KT-250T-432-E-R-H
KT250-457-E-R-S	457	N.A	Over	N.A	Rear	11	167	KT-250T-457-E-R-H
KT250-483-E-R-S	483	N.A	Over	N.A	Rear	11	169	KT-250T-483-E-R-H

* Contact FKH for optional features.

KI25K Series

Integrated Axle & Suspension – K Hitch Air



Axle Standard Features

- Beam – Round 146 x 10mm one piece forged, with swaged spindles and induction hardened bearing journals.
- Brake spider – 1 piece forged.
- Brake Type – Ø420x180 (16.5"x7") GP – 4515
- Camshaft – Enclosed 1 ½" – 10 Spline
- ABS Ready – Pole ring & sensor block fitted
- Lube – Semi fluid
- Truturn Drum
- SARN: 35665, CTA-035665

Optional Features – Sold Separately

- Manual slack adjusters
- Auto slack adjusters
- ABS sensors and leads

Optional Features – Sold Separately

- Axle Lift Kit
- Hubo
- Boosters

Suspension Standard Features

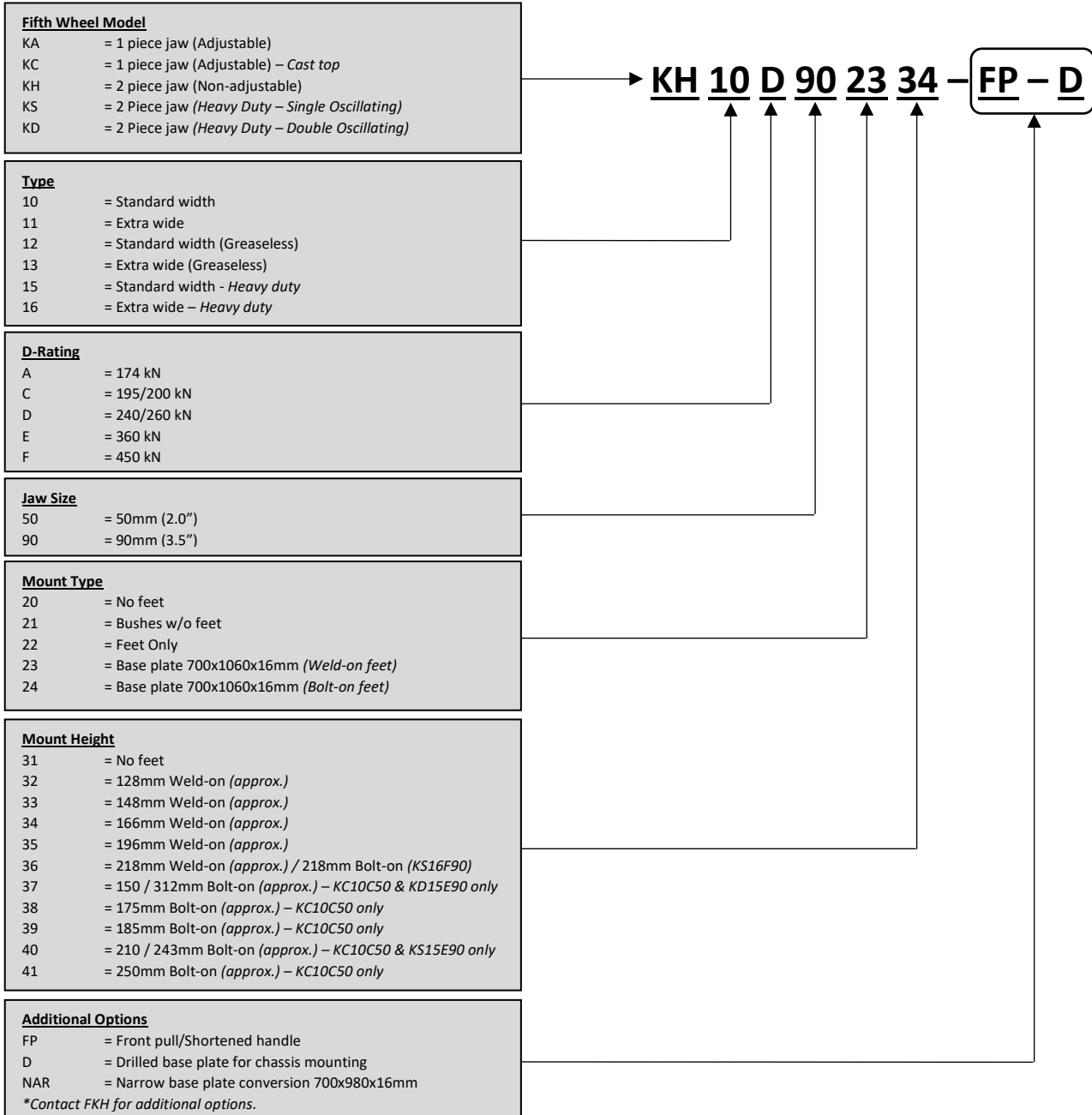
- Integrated axle & suspension

Integrated Model Stock Code	Nominal Ride Height (mm)	Spring Style	RFS Certificate	Shock Mount Position	Spindle	Track (mm)	Axle Beam (mm)	Stud	PCD	Lubrication	Capacity per Axle (tonne)	Weight Approx (kg)
KI25K380CBF7318L	381	Over	N.A	Front	FP	1854	Ø146x10	M22x1.5x123	10x285.75	Semi fluid	11	412
KI25K430CBF7318L	432	Over	N.A	Front	FP	1854	Ø146x10	M22x1.5x123	10x285.75	Semi fluid	11	419

* Contact FKH for optional features.

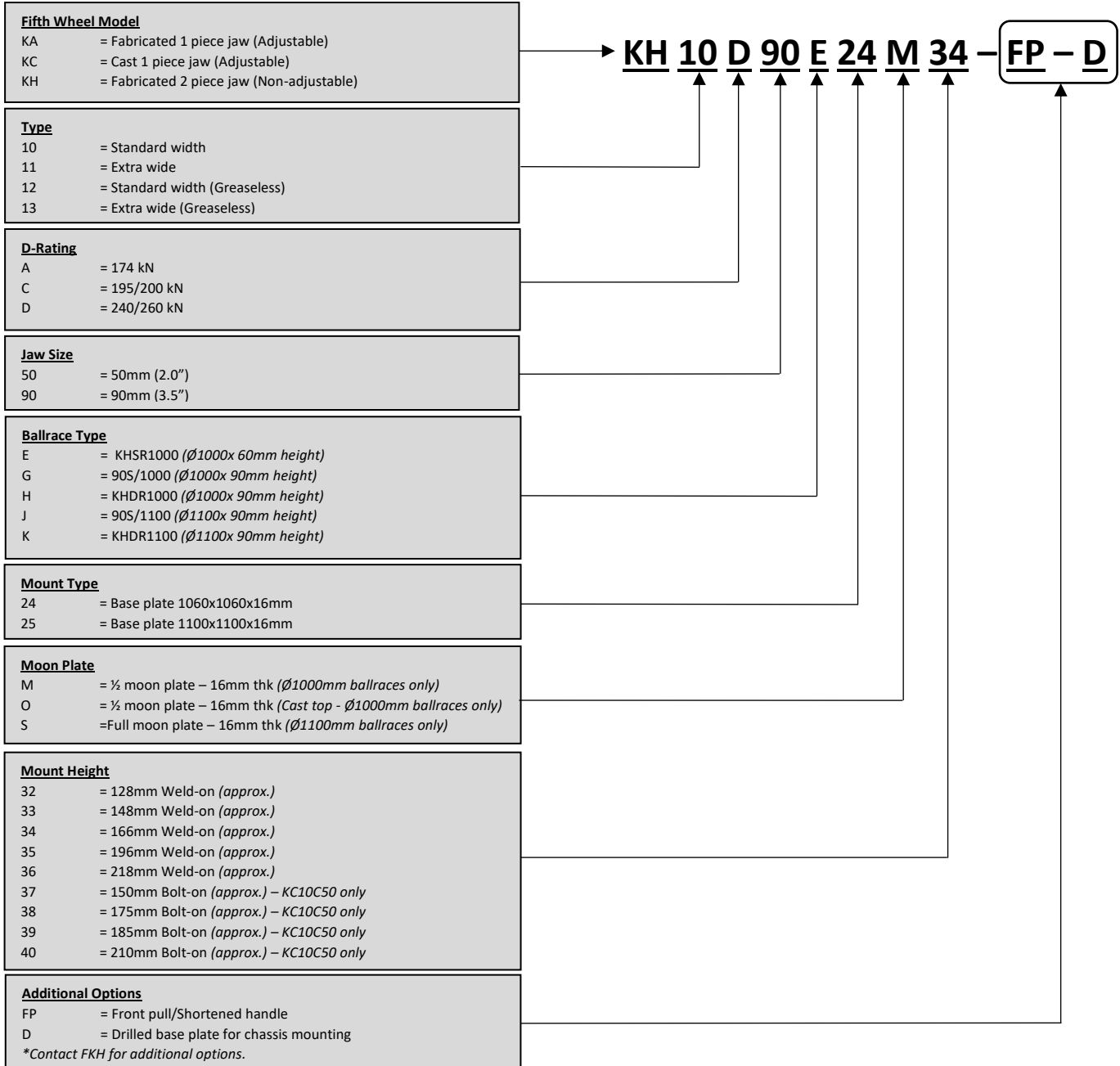
FIFTH WHEEL W/O BALLRACE STOCK CODE CONFIGURATOR

EXPLANATION OF K HITCH FIFTH WHEEL CODE (NO BALLRACE)



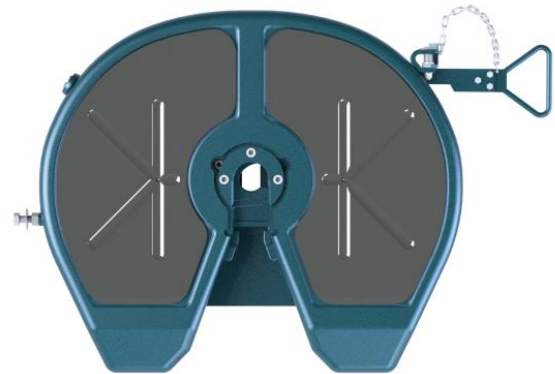
FIFTH WHEEL W/ BALLRACE STOCK CODE CONFIGURATOR

EXPLANATION OF K HITCH FIFTH WHEEL CODE (w/ BALLRACE)



KA10A50 Series

Fifth Wheel Assembly – Highway Master



Fifth Wheel Standard Features

- Adjustable 50mm 1 Piece Jaw
- Fabricated fifth wheel – Pressed top
- Standard width (915mm)
- Steel pad (Greaseable)
- CTA-035665

Suitable Applications

- General Freight
- B-Double

Optional Features

- Drilled base plate
- Front pull handle

Optional Features - Sold Separately

- 1-point greasing system

Fifth Wheel Model	Overall Height (mm)	Assembly D-Rating (kN)	Vertical Capacity (Ton)	Ballrace Part No.	Base Plate Dimensions (mm)	Weight Approx (kg)
KA10A502233	152	174	20	N.A	N.A	143
KA10A502234	170	174	20	N.A	N.A	145
KA10A502235	200	174	20	N.A	N.A	148
KA10A502236	222	174	20	N.A	N.A	152
KA10A502334	186	174	20	N.A	700 x 1060 x 16	222
KA10A502335	216	174	20	N.A	700 x 1060 x 16	225
KA10A502336	238	174	20	N.A	700 x 1060 x 16	229
KA10A50E24M33	244	174	20	KHSR1000	1060 x 1060 x 16	378
KA10A50E24M34	262	174	20	KHSR1000	1060 x 1060 x 16	380
KA10A50E24M35	292	174	20	KHSR1000	1060 x 1060 x 16	383
KA10A50E24M36	314	174	20	KHSR1000	1060 x 1060 x 16	387
KA10A50G24M33	274	174	16	90S/1000	1060 x 1060 x 16	386
KA10A50G24M34	292	174	16	90S/1000	1060 x 1060 x 16	388

* Contact FKH for optional features.

KA12A50 Series

Fifth Wheel Assembly – Highway Master + Greaseless Pad



Fifth Wheel Standard Features

- Adjustable 50mm 1 Piece Jaw
- Fabricated fifth wheel – Pressed top
- Standard width (915mm)
- Greaseless pad
- CTA-035665

Suitable Applications

- General Freight
- B-Double

Optional Features

- Drilled base plate
- Front pull handle

Optional Features - Sold Separately

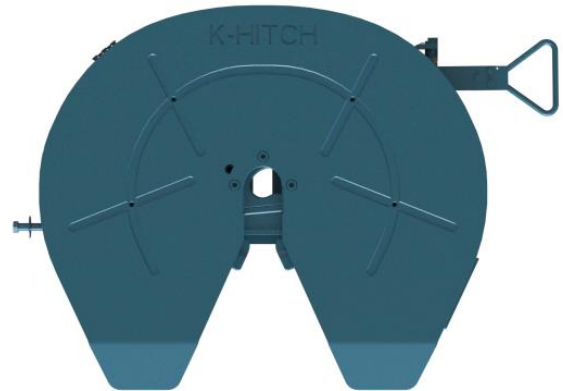
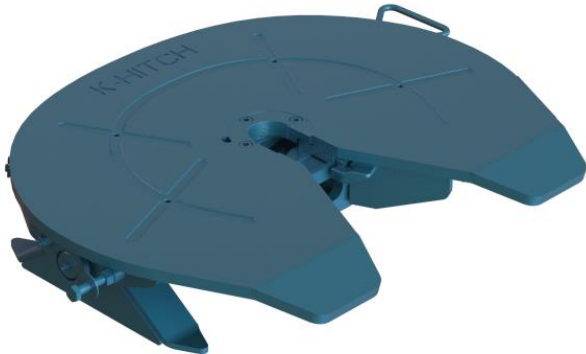
- 1-point greasing system

Fifth Wheel Model	Overall Height (mm)	Assembly D-Rating (kN)	Vertical Capacity (Ton)	Ballrace Part No.	Base Plate Dimensions (mm)	Weight Approx (kg)
KA12A502233	152	174	20	N.A	N.A	126
KA12A502234	170	174	20	N.A	N.A	128
KA12A502235	200	174	20	N.A	N.A	131
KA12A502236	222	174	20	N.A	N.A	135
KA12A502334	186	174	20	N.A	700 x 1060 x 16	205
KA12A502335	216	174	20	N.A	700 x 1060 x 16	208
KA12A502336	238	174	20	N.A	700 x 1060 x 16	212
KA12A50E24M33	244	174	20	KHSR1000	1060 x 1060 x 16	361
KA12A50E24M34	262	174	20	KHSR1000	1060 x 1060 x 16	363
KA12A50E24M35	292	174	20	KHSR1000	1060 x 1060 x 16	366
KA12A50E24M36	314	174	20	KHSR1000	1060 x 1060 x 16	370
KA12A50G24M33	274	174	16	90S/1000	1060 x 1060 x 16	369
KA12A50G24M34	292	174	16	90S/1000	1060 x 1060 x 16	371

* Contact FKH for optional features.

KA10C50 Series

Fifth Wheel Assembly – Fleet Master



Fifth Wheel Standard Features

- Adjustable 50mm 1 Piece Jaw
- Fabricated fifth wheel
- Standard width (915mm)
- CTA-027120

Suitable Applications

- Stock crate
- Tankers
- Tipper
- Road trains

Optional Features

- Drilled base plate
- Front pull handle

Optional Features - Sold Separately

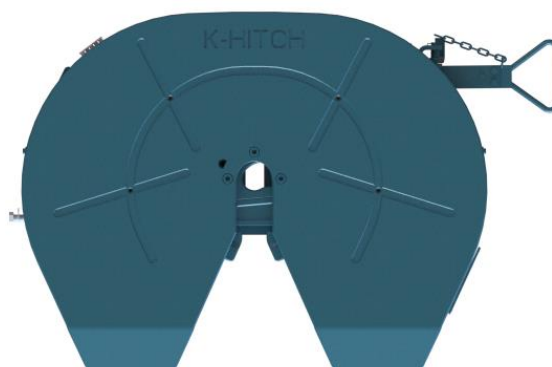
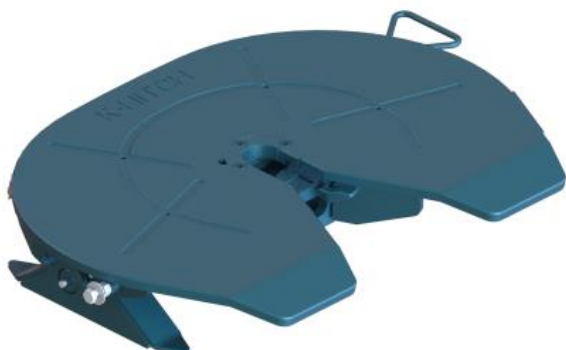
- 1-point greasing system

Fifth Wheel Model	Overall Height (mm)	Assembly D-Rating (kN)	Vertical Capacity (Ton)	Ballrace Part No.	Base Plate Dimensions (mm)	Weight Approx (kg)
KA10C502233	148	195	25	N.A	N.A	144
KA10C502234	166	195	25	N.A	N.A	146
KA10C502235	196	195	25	N.A	N.A	149
KA10C502236	218	195	25	N.A	N.A	153
KA10C502333	164	195	25	N.A	700 x 1060 x 16	221
KA10C502334	182	195	25	N.A	700 x 1060 x 16	223
KA10C502335	212	195	25	N.A	700 x 1060 x 16	226
KA10C502336	234	195	25	N.A	700 x 1060 x 16	230
KA10C50E24M33	240	195	25	KHSR1000	1060 x 1060 x 16	379
KA10C50E24M34	258	195	25	KHSR1000	1060 x 1060 x 16	381
KA10C50G24M33	270	190	16	90S/1000	1060 x 1060 x 16	387
KA10C50G24M34	288	190	16	90S/1000	1060 x 1060 x 16	389

* Contact FKH for optional features.

KA11C50 Series

Fifth Wheel Assembly – Fleet Master (Extra wide)



Fifth Wheel Standard Features

- Adjustable 50mm 1 Piece Jaw
- Fabricated fifth wheel
- Extra wide (1015mm)
- CTA-027120

Suitable Applications

- Stock crate
- Tankers
- Tipper
- Road trains

Optional Features

- Drilled base plate
- Front pull handle

Optional Features - Sold Separately

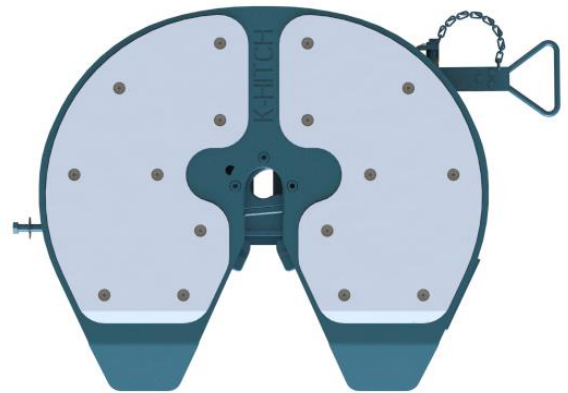
- 1-point greasing system

Fifth Wheel Model	Overall Height (mm)	Assembly D-Rating (kN)	Vertical Capacity (Ton)	Ballrace Part No.	Base Plate Dimensions (mm)	Weight Approx (kg)
KA11C502233	148	195	25	N.A	N.A	167
KA11C502234	166	195	25	N.A	N.A	169
KA11C502235	196	195	25	N.A	N.A	172
KA11C502236	218	195	25	N.A	N.A	176
KA11C502333	164	195	25	N.A	700 x 1060 x 16	244
KA11C502334	182	195	25	N.A	700 x 1060 x 16	246
KA11C502335	212	195	25	N.A	700 x 1060 x 16	249
KA11C502336	234	195	25	N.A	700 x 1060 x 16	253
KA11C50E24M33	240	195	25	KHSR1000	1060 x 1060 x 16	402
KA11C50E24M34	258	195	25	KHSR1000	1060 x 1060 x 16	404
KA11C50G24M33	270	190	16	90S/1000	1060 x 1060 x 16	410
KA11C50G24M34	288	190	16	90S/1000	1060 x 1060 x 16	412
KA11C50J25S33	270	195	20	90S/1100	1100 x 1100 x 16	431
KA11C50J25S34	288	195	20	90S/1100	1100 x 1100 x 16	433

* Contact FKH for optional features.

KA12C50 Series

Fifth Wheel Assembly – Fleet Master + Greaseless pad



Fifth Wheel Standard Features

- Adjustable 50mm 1 Piece Jaw
- Fabricated fifth wheel
- Standard width (915mm)
- Greaseless pad
- CTA-027120

Optional Features

- Drilled base plate
- Front pull handle

Optional Features - Sold Separately

- 1-point greasing system

Suitable Applications

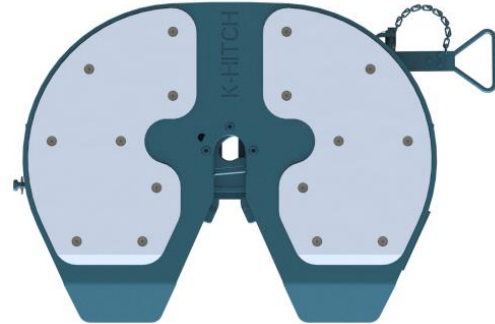
- Stock crate
- Tankers
- Tipper

Fifth Wheel Model	Overall Height (mm)	Assembly D-Rating (kN)	Vertical Capacity (Ton)	Ballrace Part No.	Base Plate Dimensions (mm)	Weight Approx (kg)
KA12C502233	152	195	25	N.A	N.A	136
KA12C502234	170	195	25	N.A	N.A	138
KA12C502235	200	195	25	N.A	N.A	141
KA12C502236	222	195	25	N.A	N.A	145
KA12C502333	168	195	25	N.A	700 x 1060 x 16	213
KA12C502334	186	195	25	N.A	700 x 1060 x 16	215
KA12C502335	216	195	25	N.A	700 x 1060 x 16	218
KA12C502336	238	195	25	N.A	700 x 1060 x 16	222
KA12C50E24M33	244	195	25	KHSR1000	1060 x 1060 x 16	371
KA12C50E24M34	262	195	25	KHSR1000	1060 x 1060 x 16	373
KA12C50G24M33	274	190	16	90S/1000	1060 x 1060 x 16	379
KA12C50G24M34	292	190	16	90S/1000	1060 x 1060 x 16	381

* Contact FKH for optional features.

KA13C50 Series

Fifth Wheel Assembly – Fleet Master (Extra wide) + Greaseless Pad



Fifth Wheel Standard Features

- Adjustable 50mm 1 Piece Jaw
- Fabricated fifth wheel
- Extra wide (1015mm)
- CTA-027120

Suitable Applications

- Stock crate
- Tankers
- Tipper
- Road trains

Optional Features

- Drilled base plate
- Front pull handle

Optional Features - Sold Separately

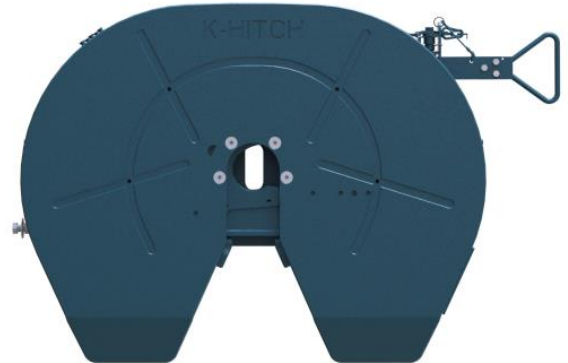
- 1-point greasing system

Fifth Wheel Model	Overall Height (mm)	Assembly D-Rating (kN)	Vertical Capacity (Ton)	Ballrace Part No.	Base Plate Dimensions (mm)	Weight Approx (kg)
KA13C502233	152	195	25	N.A	N.A	167
KA13C502234	170	195	25	N.A	N.A	169
KA13C502235	200	195	25	N.A	N.A	172
KA13C502236	222	195	25	N.A	N.A	176
KA13C502333	168	195	25	N.A	700 x 1060 x 16	244
KA13C502334	186	195	25	N.A	700 x 1060 x 16	246
KA13C502335	216	195	25	N.A	700 x 1060 x 16	249
KA13C502336	238	195	25	N.A	700 x 1060 x 16	253
KA13C50E24M33	244	195	25	KHSR1000	1060 x 1060 x 16	402
KA13C50E24M34	262	195	25	KHSR1000	1060 x 1060 x 16	404
KA13C50G24M33	274	190	16	90S/1000	1060 x 1060 x 16	410
KA13C50G24M34	292	190	16	90S/1000	1060 x 1060 x 16	412
KA13C50J25S33	274	195	20	90S/1100	1100 x 1100 x 16	431
KA13C50J25S34	292	195	20	90S/1100	1100 x 1100 x 16	433

* Contact FKH for optional features.

KA11D90 Series

Fifth Wheel Assembly – Fleet Master (Extra wide)



Fifth Wheel Standard Features

- Adjustable 90mm 1 Piece Jaw
- Fabricated fifth wheel
- Extra wide (1015mm)
- CTA-030639

Suitable Applications

- Stock crate
- Tankers
- Tipper
- Road trains

Optional Features

- Drilled base plate
- Shortened handle

Optional Features - Sold Separately

- 1-point greasing system

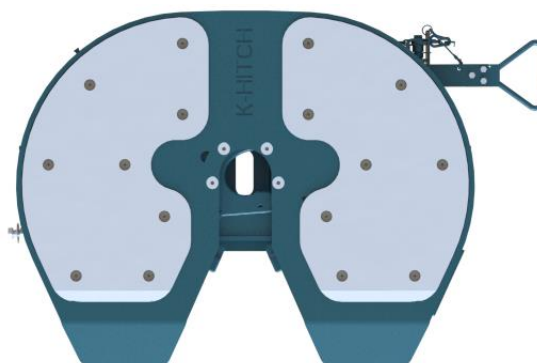
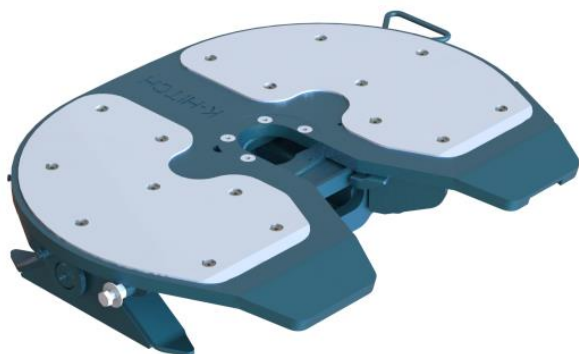
Fifth Wheel Model	Overall Height (mm)	Assembly D-Rating (kN)	Vertical Capacity (Ton)	Ballrace Part No.	Base Plate Dimensions (mm)	Weight Approx (kg)
KA11D902233	152	240	28	N.A	N.A	196
KA11D902234	170	240	28	N.A	N.A	198
KA11D902235	200	240	28	N.A	N.A	201
KA11D902236	222	240	28	N.A	N.A	205
KA11D90E24M33	244	240	26	KHSR1000	1060 x 1060 x 16	431
KA11D90E24M34	262	240	26	KHSR1000	1060 x 1060 x 16	433
KA11D90G24M33	274	190	16	90S/1000	1060 x 1060 x 16	439
KA11D90G24M34	292	190	16	90S/1000	1060 x 1060 x 16	441
KA11D90H24M33	274	240	28	KHDR1000	1060 x 1060 x 16	464
KA11D90H24M34	292	240	28	KHDR1000	1060 x 1060 x 16	466
KA11D90H24M35	322	240	28	KHDR1000	1060 x 1060 x 16	469
KA11D90H24M36	344	240	28	KHDR1000	1060 x 1060 x 16	473

* Contact FKH for optional features.

** Contact FKH about fixed plate mounting options before use of this fifth wheel.

KA13D90 Series

Fifth Wheel Assembly – Fleet Master (Extra wide)



Fifth Wheel Standard Features

- Adjustable 90mm 1 Piece Jaw
- Fabricated fifth wheel
- Extra wide (1015mm)
- Greaseless pad
- CTA-030639

Suitable Applications

- Stock crate
- Tankers
- Tipper
- Road trains

Optional Features

- Drilled base plate
- Shortened handle

Optional Features - Sold Separately

- 1-point greasing system

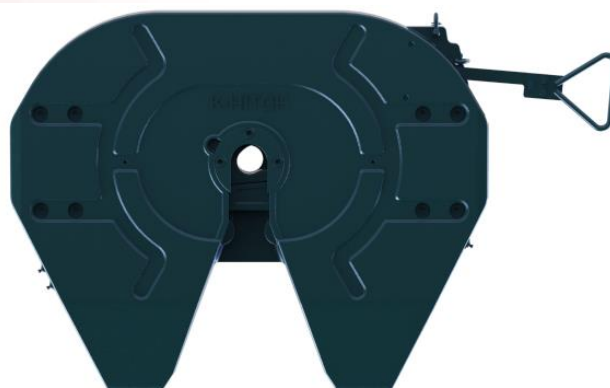
Fifth Wheel Model	Overall Height (mm)	Assembly D-Rating (kN)	Vertical Capacity (Ton)	Ballrace Part No.	Base Plate Dimensions (mm)	Weight Approx (kg)
KA13D902233	156	240	28	N.A	N.A	188
KA13D902234	174	240	28	N.A	N.A	190
KA13D902235	204	240	28	N.A	N.A	193
KA13D902236	226	240	28	N.A	N.A	197
KA13D90E24M33	248	240	26	KHSR1000	1060 x 1060 x 16	423
KA13D90E24M34	266	240	26	KHSR1000	1060 x 1060 x 16	425
KA13D90G24M33	278	190	16	90S/1000	1060 x 1060 x 16	431
KA13D90G24M34	296	190	16	90S/1000	1060 x 1060 x 16	433
KA13D90H24M33	278	240	28	KHDR1000	1060 x 1060 x 16	456
KA13D90H24M34	296	240	28	KHDR1000	1060 x 1060 x 16	458
KA13D90H24M35	326	240	28	KHDR1000	1060 x 1060 x 16	461
KA13D90H24M36	348	240	28	KHDR1000	1060 x 1060 x 16	465

* Contact FKH for optional features.

** Contact FKH about fixed plate mounting options before use of this fifth wheel.

KC10C50 Series

Fifth Wheel Assembly – Fleet Master (Cast)



Fifth Wheel Standard Features

- Adjustable 50mm 1 Piece Jaw
- Cast fifth wheel
- Standard width (968mm)
- CTA-047568

Suitable Applications

- Stock crate
- Tankers
- Tipper
- Road trains

Optional Features

- Drilled base plate

Optional Features - Sold Separately

- 1-point greasing system

Fifth Wheel Model	Overall Height (mm)	Assembly D-Rating (kN)	Vertical Capacity (Ton)	Ballrace Part No.	Base Plate Dimensions (mm)	Weight Approx (kg)
KC10C502237	150	200	20	N.A	N.A	149
KC10C502238	175	200	20	N.A	N.A	484
KC10C502239	185	200	20	N.A	N.A	152
KC10C502240	210	200	20	N.A	N.A	188
KC10C502241	250	200	20	N.A	N.A	166
KC10C502437	166	200	20	N.A	700 x 1060 x 16	226
KC10C502438	191	200	20	N.A	700 x 1060 x 16	261
KC10C502439	201	200	20	N.A	700 x 1060 x 16	229
KC10C502440	226	200	20	N.A	700 x 1060 x 16	265
KC10C502441	266	200	20	KHSR1000	1060 x 1060 x 16	243
KC10C50E24O37	246	200	20	KHSR1000	1060 x 1060 x 16	384
KC10C50E24O38	271	200	20	KHSR1000	1060 x 1060 x 16	419
KC10C50E24O39	281	174	20	KHSR1000	1060 x 1060 x 16	387
KC10C50E24O40	306	174	20	KHSR1000	1060 x 1060 x 16	423
KC10C50G24O37	276	190	16	90S/1000	1060 x 1060 x 16	392
KC10C50G24O38	301	190	16	90S/1000	1060 x 1060 x 16	427

* Contact FKH for optional features.

KH10D90 Series

Fifth Wheel Assembly – Road Boss



Fifth Wheel Standard Features

- Non-adjustable 90mm 2 Piece Jaw
- Fabricated fifth wheel
- Standard width (915mm)
- CTA-029119

Suitable Applications

- Stock crate
- Tankers
- Tipper
- Road trains

Optional Features

- Drilled base plate
- Shortened handle

Optional Features - Sold Separately

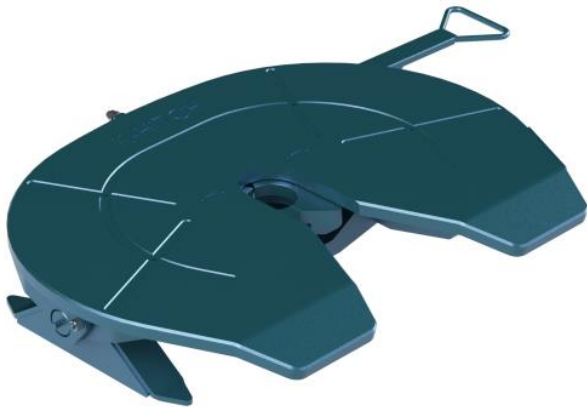
- 1-point greasing system

Fifth Wheel Model	Overall Height (mm)	Assembly D-Rating (kN)	Vertical Capacity (Ton)	Ballrace Part No.	Base Plate Dimensions (mm)	Weight Approx (kg)
KH10D902232	132	260	36	N.A	N.A	188
KH10D902233	152	260	36	N.A	N.A	191
KH10D902234	170	260	36	N.A	N.A	193
KH10D902235	200	260	36	N.A	N.A	196
KH10D902236	222	260	36	N.A	N.A	200
KH10D902333	168	260	36	N.A	700 x 1060 x 16	268
KH10D902334	186	260	36	N.A	700 x 1060 x 16	270
KH10D902335	216	260	36	N.A	700 x 1060 x 16	273
KH10D902336	238	260	36	N.A	700 x 1060 x 16	277
KH10D90E24M32	224	240	30	KHSR1000	1060 x 1060 x 16	423
KH10D90E24M33	244	240	30	KHSR1000	1060 x 1060 x 16	426
KH10D90E24M34	262	240	30	KHSR1000	1060 x 1060 x 16	428
KH10D90G24M32	254	190	16	90S/1000	1060 x 1060 x 16	431
KH10D90G24M33	274	190	16	90S/1000	1060 x 1060 x 16	434
KH10D90G24M34	292	190	16	90S/1000	1060 x 1060 x 16	436
KH10D90H24M32	254	260	36	KHDR1000	1060 x 1060 x 16	456
KH10D90H24M33	274	260	36	KHDR1000	1060 x 1060 x 16	459
KH10D90H24M34	292	260	36	KHDR1000	1060 x 1060 x 16	461
KH10D90H24M35	322	260	36	KHDR1000	1060 x 1060 x 16	464
KH10D90H24M36	344	260	36	KHDR1000	1060 x 1060 x 16	468

* Contact FKH for optional features.

KH11D90 Series

Fifth Wheel Assembly – Road Boss (Extra wide)



Fifth Wheel Standard Features

- Non-adjustable 90mm 2 Piece Jaw
- Fabricated fifth wheel
- Extra wide (1015mm)
- CTA-029119

Suitable Applications

- Stock crate
- Tankers
- Tipper
- Road trains

Optional Features

- Drilled base plate
- Shortened handle

Optional Features - Sold Separately

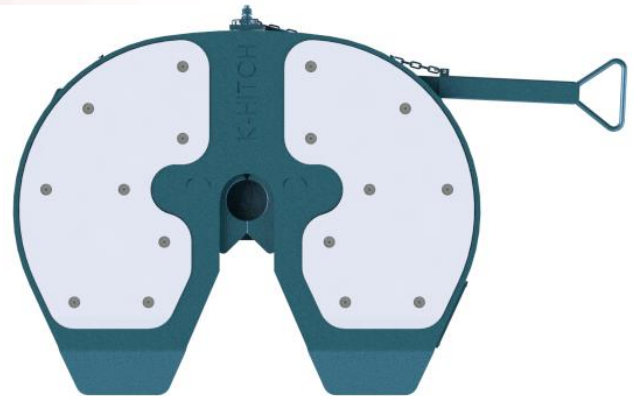
- 1-point greasing system

Fifth Wheel Model	Overall Height (mm)	Assembly D-Rating (kN)	Vertical Capacity (Ton)	Ballrace Part No.	Base Plate Dimensions (mm)	Weight Approx (kg)
KH11D902232	132	260	36	N.A	N.A	198
KH11D902233	152	260	36	N.A	N.A	201
KH11D902234	170	260	36	N.A	N.A	203
KH11D902235	200	260	36	N.A	N.A	206
KH11D902236	222	260	36	N.A	N.A	210
KH11D902333	168	260	36	N.A	700 x 1060 x 16	278
KH11D902334	186	260	36	N.A	700 x 1060 x 16	280
KH11D902335	216	260	36	N.A	700 x 1060 x 16	283
KH11D902336	238	260	36	N.A	700 x 1060 x 16	287
KH11D90E24M32	224	240	30	KHSR1000	1060 x 1060 x 16	433
KH11D90E24M33	244	240	30	KHSR1000	1060 x 1060 x 16	436
KH11D90E24M34	262	240	30	KHSR1000	1060 x 1060 x 16	438
KH11D90G24M32	254	190	16	90S/1000	1060 x 1060 x 16	441
KH11D90G24M33	274	190	16	90S/1000	1060 x 1060 x 16	444
KH11D90G24M34	292	190	16	90S/1000	1060 x 1060 x 16	446
KH11D90H24M32	254	260	36	KHDR1000	1060 x 1060 x 16	466
KH11D90H24M33	274	260	36	KHDR1000	1060 x 1060 x 16	469
KH11D90H24M34	292	260	36	KHDR1000	1060 x 1060 x 16	471
KH11D90H24M35	322	260	36	KHDR1000	1060 x 1060 x 16	474
KH11D90H24M36	344	260	36	KHDR1000	1060 x 1060 x 16	478
KH11D90J25S32	254	260	20	90S/1100	1100 x 1100 x 16	462
KH11D90J25S33	274	260	20	90S/1100	1100 x 1100 x 16	465
KH11D90J25S34	292	260	20	90S/1100	1100 x 1100 x 16	467
KH11D90K25S32	254	260	60	KHDR1100	1100 x 1100 x 16	481
KH11D90K25S33	274	260	60	KHDR1100	1100 x 1100 x 16	484
KH11D90K25S34	292	260	60	KHDR1100	1100 x 1100 x 16	486

* Contact FKH for optional features.

KH12D90 Series

Fifth Wheel Assembly – Road Boss + Greaseless Pad



Fifth Wheel Standard Features

- Non-adjustable 90mm 2 Piece Jaw
- Fabricated fifth wheel
- Standard width (915mm)
- Greaseless pad
- CTA-029119

Optional Features

- Drilled base plate
- Shortened handle

Optional Features - Sold Separately

- 1-point greasing system

Suitable Applications

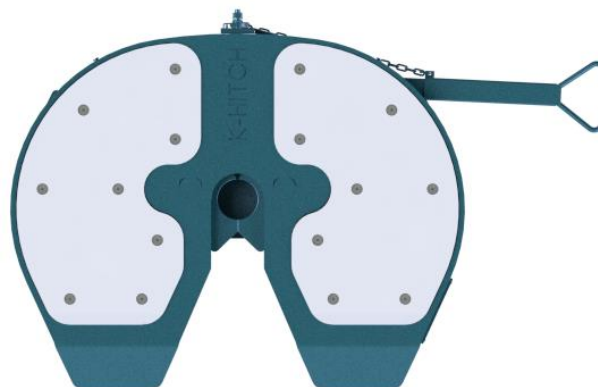
- Stock crate
- Tankers
- Tipper
- Road trains

Fifth Wheel Model	Overall Height (mm)	Assembly D-Rating (kN)	Vertical Capacity (Ton)	Ballrace Part No.	Base Plate Dimensions (mm)	Weight Approx (kg)
KH12D902232	136	260	36	N.A	N.A	180
KH12D902233	156	260	36	N.A	N.A	183
KH12D902234	174	260	36	N.A	N.A	185
KH12D902235	204	260	36	N.A	N.A	188
KH12D902236	226	260	36	N.A	N.A	192
KH12D902333	172	260	36	N.A	700 x 1060 x 16	260
KH12D902334	190	260	36	N.A	700 x 1060 x 16	262
KH12D902335	220	260	36	N.A	700 x 1060 x 16	265
KH12D902336	242	260	36	N.A	700 x 1060 x 16	269
KH12D90E24M32	228	240	30	KHSR1000	1060 x 1060 x 16	415
KH12D90E24M33	248	240	30	KHSR1000	1060 x 1060 x 16	418
KH12D90E24M34	266	240	30	KHSR1000	1060 x 1060 x 16	420
KH12D90G24M32	258	190	16	90S/1000	1060 x 1060 x 16	423
KH12D90G24M33	278	190	16	90S/1000	1060 x 1060 x 16	426
KH12D90G24M34	296	190	16	90S/1000	1060 x 1060 x 16	428
KH12D90H24M32	258	260	36	KHDR1000	1060 x 1060 x 16	448
KH12D90H24M33	278	260	36	KHDR1000	1060 x 1060 x 16	451
KH12D90H24M34	296	260	36	KHDR1000	1060 x 1060 x 16	453
KH12D90H24M35	326	260	36	KHDR1000	1060 x 1060 x 16	456
KH12D90H24M36	348	260	36	KHDR1000	1060 x 1060 x 16	460

* Contact FKH for optional features.

KH13D90 Series

Fifth Wheel Assembly – Road Boss (Extra wide) + Greaseless Pad



Fifth Wheel Standard Features

- Non-adjustable 90mm 2 Piece Jaw
- Fabricated fifth wheel
- Extra wide (1015mm)
- Greaseless pad
- CTA-029119

Suitable Applications

- Stock crate
- Tankers
- Tipper
- Road trains

Optional Features

- Drilled base plate
- Shortened handle

Optional Features - Sold Separately

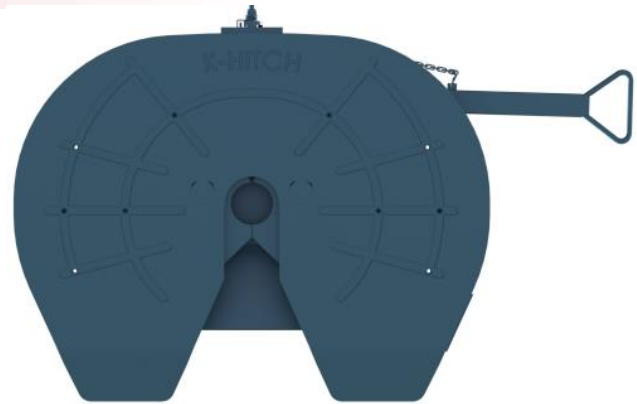
- 1-point greasing system

Fifth Wheel Model	Overall Height (mm)	Assembly D-Rating (kN)	Vertical Capacity (Ton)	Ballrace Part No.	Base Plate Dimensions (mm)	Weight Approx (kg)
KH13D902232	136	260	36	N.A	N.A	190
KH13D902233	156	260	36	N.A	N.A	193
KH13D902234	174	260	36	N.A	N.A	195
KH13D902235	204	260	36	N.A	N.A	198
KH13D902236	226	260	36	N.A	N.A	202
KH13D902333	172	260	36	N.A	700 x 1060 x 16	270
KH13D902334	190	260	36	N.A	700 x 1060 x 16	272
KH13D902335	220	260	36	N.A	700 x 1060 x 16	275
KH13D902336	242	260	36	N.A	700 x 1060 x 16	279
KH13D90E24M32	228	240	30	KHSR1000	1060 x 1060 x 16	425
KH13D90E24M33	248	240	30	KHSR1000	1060 x 1060 x 16	428
KH13D90E24M34	266	240	30	KHSR1000	1060 x 1060 x 16	430
KH13D90G24M32	258	190	16	90S/1000	1060 x 1060 x 16	433
KH13D90G24M33	278	190	16	90S/1000	1060 x 1060 x 16	436
KH13D90G24M34	296	190	16	90S/1000	1060 x 1060 x 16	438
KH13D90H24M32	258	260	36	KHDR1000	1060 x 1060 x 16	458
KH13D90H24M33	278	260	36	KHDR1000	1060 x 1060 x 16	461
KH13D90H24M34	296	260	36	KHDR1000	1060 x 1060 x 16	463
KH13D90H24M35	326	260	36	KHDR1000	1060 x 1060 x 16	466
KH13D90H24M36	348	260	36	KHDR1000	1060 x 1060 x 16	470
KH13D90J25S32	258	260	20	90S/1100	1100 x 1100 x 16	454
KH13D90J25S33	278	260	20	90S/1100	1100 x 1100 x 16	457
KH13D90J25S34	296	260	20	90S/1100	1100 x 1100 x 16	459
KH13D90K25S32	258	260	60	KHDR1100	1100 x 1100 x 16	473
KH13D90K25S33	278	260	60	KHDR1100	1100 x 1100 x 16	476
KH13D90K25S34	296	260	60	KHDR1100	1100 x 1100 x 16	479

* Contact FKH for optional features.

KS15E90 Series

Fifth Wheel Assembly – Komodo 40



Fifth Wheel Standard Features

- Non-adjustable 90mm 2 Piece Jaw
- Fabricated fifth wheel
- Standard width – *Heavy duty*
- CTA-029119 (*Max 260kN*)
- 360 kN Off Highway rating (*CTA not applicable*)

Optional Features

- Drilled base plate
- Invertible mounting feet

Optional Features - Sold Separately

- 1-point greasing system

Suitable Applications

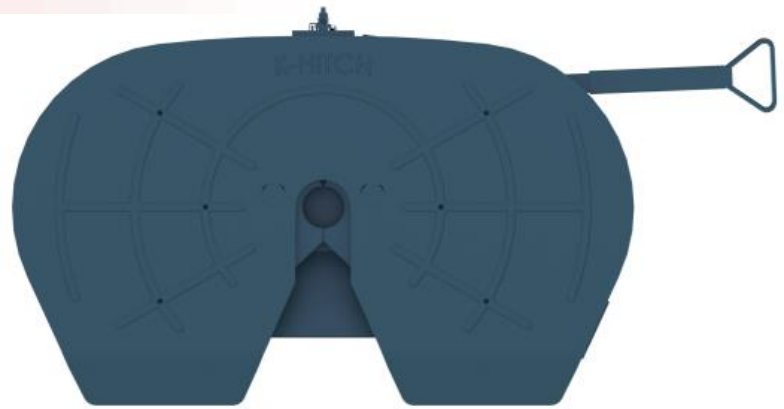
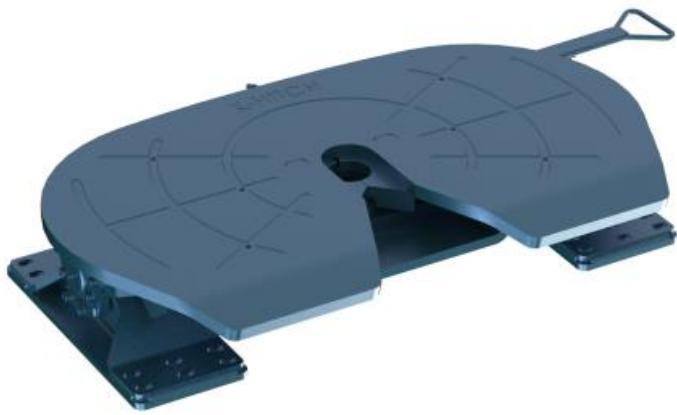
- Side tippers
- Road trains
- Mining

Fifth Wheel Model	Overall Height (mm)	Assembly D-Rating (kN)	Vertical Capacity (Ton)	Ballrace Part No.	Base Plate Dimensions (mm)	Weight Approx (kg)
KS15E902240	223	360	40	N.A	N.A	350
KS15E902340	243	360	40	N.A	700 x 1060 x 20	456

* Contact FKH for optional features.

KS16F90 Series

Fifth Wheel Assembly – Komodo 75



Fifth Wheel Standard Features

- Non-adjustable 90mm 2 Piece Jaw
- Fabricated fifth wheel
- Extra wide - *Heavy duty*
- CTA N/A

Suitable Applications

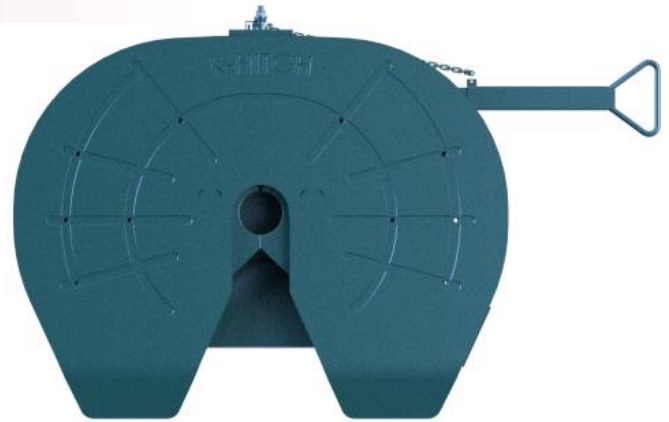
- Extreme applications

Fifth Wheel Model	Overall Height (mm)	Assembly D-Rating (kN)	Vertical Capacity (Ton)	Ballrace Part No.	Base Plate Dimensions (mm)	Weight Approx (kg)
KS16F902236	218	450	75	N.A	N.A	525

* Contact FKH for optional features.

KD15E90 Series

Fifth Wheel Assembly – Komodo 50 (Double Oscillating)



Fifth Wheel Standard Features

- Non-adjustable 90mm 2 Piece Jaw
- Fabricated fifth wheel
- Standard width – *Heavy duty*
- CTA N/A

Optional Features

- Drilled base plate

Suitable Applications

- Side tippers
- Road trains
- Mining

Fifth Wheel Model	Overall Height (mm)	Assembly D-Rating (kN)	Vertical Capacity (Ton)	Ballrace Part No.	Base Plate Dimensions (mm)	Weight Approx (kg)
KD15E902237	292	360	50	N.A	N.A	372
KD15E902337	312	360	50	N.A	700 x 1060 x 20	468

* Contact FKH for optional features.

Ballraces

Ballraces



Optional Features

- Drilled to FKH pattern

Optional Features - *Sold Separately*

- One- lube point grease distributor

Ballrace Stock Code	Style	Vertical Capacity (ton)	D-rating (kN)	Top Flange Dia. (mm)	Bottom Flange Dia. (mm)	Overall Height (mm)	Weight Approx. (kg)
KHSR1000	Slewing rings	30	260	1000	1000	60	72
KHDR1000	Slewing rings	50	480	1000	1000	90	103
KHDR1100	Slewing rings	60	520	1100	1100	90	116
90S/1000	Seamless rolled rings	16	190	1000	987	90	82
90S/1100	Seamless rolled rings	20	260	1108	1095	90	92

* Contact FKH for optional features.

** The D-rating is the manufacturers rating. D-rating may decrease per its fifth wheel assembly. Contact FKH for additional information.

LANDING LEG STOCK CODE CONFIGURATOR

EXPLANATION OF LANDING LEG STOCK CODE

KH25000 1 / S E40

<u>Landing Leg Series</u>	
KH227050	= KH227
KH25000	= KH250
KH27520	= KH275
KH37000	= KH37000
KH37001	= KH37001
FW371	= FW371 <i>eleg</i>

<u>Travel (Manual leg)</u>	
1	= 430 mm (≈17")
2	= 480 mm (≈19")
4	= 350 mm (≈14")

<u>Travel (eleg)</u>	
4	= 350 mm (≈14")
7	= 430 mm (≈17")
9	= 480 mm (≈19")

<u>Foot</u>	
S	= Compensating
G	= Self-levelling

<u>Additional Options</u>	
E40	= eleg motor

Landing Leg Series

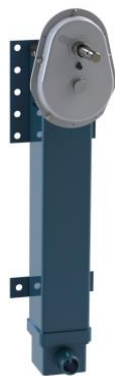
Landing Legs



KH227



KH250



KH275



KH370



FW371 (eleg)



Compensating Foot



Self-Leveling Foot

KH227 Series

Landing Leg Stock Code	Load Capacity Static (t)	Load Capacity Lift (t)	Speed Low (mm/turn)	Speed High (mm/turn)	Travel (mm)	Closed Length (mm)	Open Length (mm)	Landing Leg Foot	Weight Approx (kg)
KH2270S01/S	50	24	1.00	24.60	430 (17")	892	1322	Compensating	-
KH2270S02/S	50	24	1.00	24.60	480 (19")	942	1422	Compensating	-

KH250 Series

Landing Leg Stock Code	Load Capacity Static (t)	Load Capacity Lift (t)	Speed Low (mm/turn)	Speed High (mm/turn)	Travel (mm)	Closed Length (mm)	Open Length (mm)	Landing Leg Foot	Weight Approx (kg)
KH250001/G	80	28	0.71	5.40	430 (17")	840	1270	Self-Leveling	-
KH250001/S	80	28	0.71	5.40	430 (17")	892	1322	Compensating	-
KH250002/G	80	28	0.71	5.40	480 (19")	890	1370	Self-Leveling	-
KH250002/S	80	28	0.71	5.40	480 (19")	942	1422	Compensating	-

KH275 Series

Landing Leg Stock Code	Load Capacity Static (t)	Load Capacity Lift (t)	Speed Low (mm/turn)	Speed High (mm/turn)	Travel (mm)	Closed Length (mm)	Open Length (mm)	Landing Leg Foot	Weight Approx (kg)
KH2750202/S	40	14	1.00	11.00	480 (19")	933	1413	Compensating	-

KH370 Series

Landing Leg Stock Code	Load Capacity Static (t)	Load Capacity Lift (t)	Speed Low (mm/turn)	Speed High (mm/turn)	Travel (mm)	Closed Length (mm)	Open Length (mm)	Landing Leg Foot	Weight Approx (kg)
KH370014/S	60	28	0.95	8.50	350 (14")	815	1165	Compensating	-
KH370001/G	60	28	0.95	8.50	430 (17")	843	1273	Self-Leveling	-
KH370001/S	60	28	0.95	8.50	430 (17")	895	1325	Compensating	-
KH370002/G	60	28	0.95	8.50	470 (18.5")	883	1353	Self-Leveling	-
KH370002/S	60	28	0.95	8.50	470 (18.5")	935	1405	Compensating	-

FW371 (eleg) Series

Landing Leg Stock Code	Load Capacity Static (t)	Load Capacity Lift (t)	Speed Low (mm/turn)	Speed High (mm/turn)	Travel (mm)	Closed Length (mm)	Open Length (mm)	Landing Leg Foot	Weight Approx (kg)
FW3714GE40	60	25	0.95	8.50	350 (14")	768	1113	Self-Leveling	-
FW3717SE40	60	25	0.95	8.50	430 (17")	900	1325	Compensating	-
FW3719SE40	60	25	0.95	8.50	480 (19")	940	1415	Compensating	-

* Contact FKH for optional features.

** KH275 is a single geared leg only – no slave leg.

*** Eleg speed is approximately 0.6mm per second.

****Blank (-) information is available upon customers request.

SERVICE INFORMATION

Warranty	Bulletin No.
Limitations of Liabilities	KPW-002-0110
LGL's	KPW-004-0110
Claim Form	KPM-001-0110

Axles	Installation	Maintenance	Parts View
KF22	KPM-001-0814	KPM-004-0310	KPS-001-0912
KF29	KPM-001-0814	KPM-004-0310	KPS-001-0912
KK44	KPM-001-0814	KPM-004-0310	KPS-002-0413
KF21	KPM-001-0814	KPM-004-0310	KPS-001-1012
KF37	KPM-001-0814	KPM-004-0310	KPS-004-1212
KF75	KPM-001-0814	KPM-004-0310	KPS-001-0213
KF85	KPM-001-0814	KPM-004-0310	KPS-002-0313
KF23	KPM-001-0814	KPM-004-0310	KPS-004-0513
FB24	KPM-001-0814	KPM-004-0310	KPS-002-0513
KF26	KPM-001-0814	KPM-004-0310	KPS-001-0712
KF36	KPM-001-0814	KPM-004-0310	KPS-001-0712
KSS12	MAN0032assaliSTEFEN	MAN0032assaliSTEFEN	KPS-001-0513
KSS13	MAN0032assaliSTEFEN	MAN0032assaliSTEFEN	KPS-001-0513
KSS16	MAN0032assaliSTEFEN	MAN0032assaliSTEFEN	KPS-001-0513
KFS16	N/A	N/A	N/A

Mechanical Suspensions	Installation	Maintenance	Parts View
KHDO	KPM-002-0310	KPM-002-0310	KPS-002-1212
KHU	KPM-002-0310	KPM-002-0310	KPS-003-1212
KH680	KPM-002-0310	KPM-002-0310	KPS-001-0620
KH68U	KPM-002-0310	KPM-002-0310	KPS-001-0620
FW86	KPM-002-0310	KPM-002-0310	N/A
FW20	KPM-002-0310	KPM-002-0310	KPS-004-0214

Air Suspensions	Installation	Maintenance	Parts View
Ultra Lite	SIG-HD-EN	SIG-HD-EN	KPS-001-0712
Euro	SIG-HD-EN	SIG-HD-EN	KPS-001-0712
Heavy Duty	SIG-HD-EN	SIG-HD-EN	KPS-001-1113
Heavy Duty Plus	SIG-HD-EN	SIG-HD-EN	KPS-001-1113
MBS	SIG-HD-EN	SIG-HD-EN	KPS-001-0813
KT230	KPM-001-0712	KPM-001-0712	KPS-001-1112
KT250	KPM-001-0712	KPM-001-0712	KPS-001-1112
KI252K	KPM-001-0214	KPM-001-0214	KPS-002-0214

<i>Fifth Wheels</i>	<i>Installation</i>	<i>Maintenance</i>	<i>Parts View</i>
KA10A50	KPA-005-0310, KPM-007-0310	KPM-007-0310	KPS-006-1012
KA12A50	KPA-005-0310, KPM-007-0310	KPM-007-0310	KPS-006-1012
KA10C50	KPA-005-0310, KPM-007-0310	KPM-007-0310	KPS-005-1012
KA11C50	KPA-005-0310, KPM-007-0310	KPM-007-0310	KPS-005-1012
KA12C50	KPA-005-0310, KPM-007-0310	KPM-007-0310	KPS-005-1012
KA13C50	KPA-005-0310, KPM-007-0310	KPM-007-0310	KPS-005-1012
KA11D90	KPA-005-0310, KPM-007-0310	KPM-007-0310	KPS-005-1012
KA13D90	KPA-005-0310, KPM-007-0310	KPM-007-0310	KPS-005-1012
KC10C50	KPM-001-0915	KPM-001-0915	KPS-001-0414
KH10D90	KPA-005-0310, KPM-007-0310	KPM-007-0310	KPS-004-1012
KH11D90	KPA-005-0310, KPM-007-0310	KPM-007-0310	KPS-004-1012
KH12D90	KPA-005-0310, KPM-007-0310	KPM-007-0310	KPS-004-1012
KH13D90	KPA-005-0310, KPM-007-0310	KPM-007-0310	KPS-004-1012
KS15E90	KPA-001-0312, KPM-007-0310	KPM-007-0310	KPS-004-1012
KS16F90	N/A	KPM-001-0617	KPS-002-0818
KD15E90	KPA-001-0312, KPM-007-0310	KPM-007-0310	KPS-004-1012

<i>Ballraces</i>	<i>Installation</i>	<i>Maintenance</i>	<i>Parts View</i>
Ballrace (All)	KPM-002-0304	KPM-002-0304	KPM-001-1212

<i>Landing Legs</i>	<i>Installation</i>	<i>Maintenance</i>	<i>Parts View</i>
KH227	KPM-002-0612	KPM-002-0612	KPS-003-0113
KH25	KPM-002-0612	KPM-002-0612	KPS-003-0113
KH37000	KPM-002-0612	KPM-002-0612	KPS-003-0113
KH37000	KPM-002-0612	KPM-002-0612	KPS-003-0113
KH37001	KPM-002-0612	KPM-002-0612	KPS-003-0113
FW371	KPM-001-0714	KPM-002-0612, KPM-001-0714	KPS-003-0113

CONTACT US

Melbourne – Head office

13 – 21 Bliss Court
 Derrimut VIC, 3026
 Phone. 03 9369 0000
 Fax. 03 9369 0100
melb@khitch.com.au

Brisbane

1/15 Seeana Place
 Heathwood QLD, 4110
 Phone. 07 3372 2223
 Fax. 07 3372 1022
gld@khitch.com.au

Perth

5 Freight Road
 Kenwick WA, 6107
 Phone. 08 9350 6470
 Fax. 08 9350 6570
perth@khitch.com.au