

# HIGHWAY MASTER

24 MONTH  
STRUCTURAL  
GUARANTEE



The adjustable jaw ensures a reliable grip even with king pin wear

BALLRACE	BASE PLATE	1/2 MOON	HEIGHTS				
			128	148	166	196	218
60	16	12	216	236	254	284	306
60	16	16	220	240	258	288	310
90	16	12	246	266	284	314	336
90	16	16	250	270	288	318	340

## SPECIFICATIONS:

### RATING

174kN D value

### MECHANISM

Swinging one piece

### PRIMARY LOCK

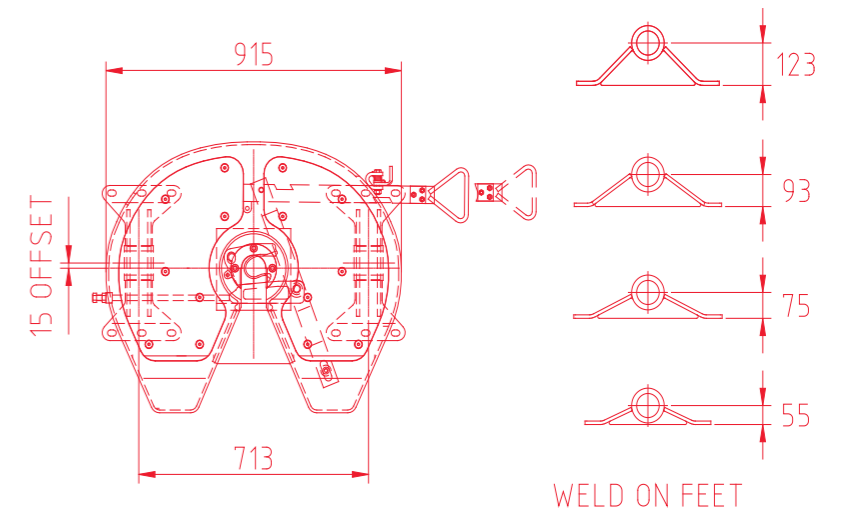
Wedge to rear of jaw

## FEATURES:

- Fully fabricated from quality steel products
- Replaceable steel or polyethelene inserts
- Easy replacement of wear parts
- ISO standard feet with bolt or weld on capabilities
- Available in 50mm king pin size and variable mounts heights
- Suit single trailer or B-Double applications
- Complies with Australian Standard AS1773-1996
- Dynamically tested and approved to current Australian Design Rules

Get a grip on operating costs with the **K Hitch** adjustable jaw fifth wheel

The K Hitch **'HIGHWAY MASTER'** range of fabricated pressed top fifth wheels has been specifically designed as the ideal on highway linehaul fifth wheel. From applications ranging from single trailer to B-Double, it presents fleet operators with ideal cost and maintenance savings. With adjustable locking jaws and easy accessed grease points, the Highway Master is also the only fifth wheel of its type to offer replaceable top plate wear pads. With greaseable steel or environmentally friendly greaseless inserts this eliminates premature wear of the top plate to further greatly extend service.



Add 4mm to overall height for greaseless fifth wheels. **WARNING:** The 128 mount height is intended for use with ballrace assemblies only. Forward oscillation restriction may occur if used on a standard base plate.

A UV stabilised, high strength polyethelene material is used in greaseless models. It is environmentally friendly, reduces maintenance and provides easier steering.