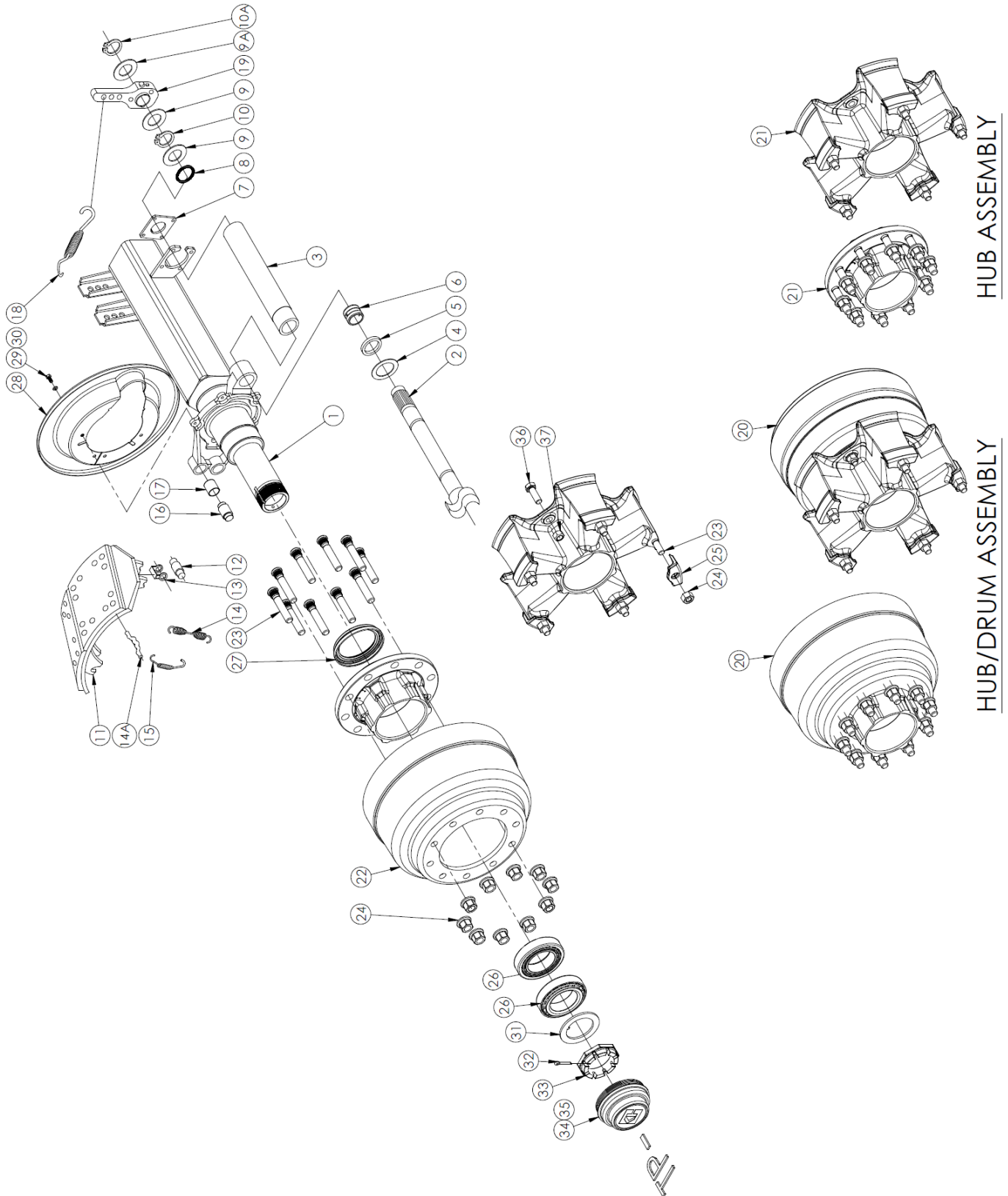


# PARTS VIEW

## KF61 DRUM BRAKE 150□ AXLE



# PARTS VIEW

**IMAGES FOR ILLUSTRATION PURPOSES ONLY**

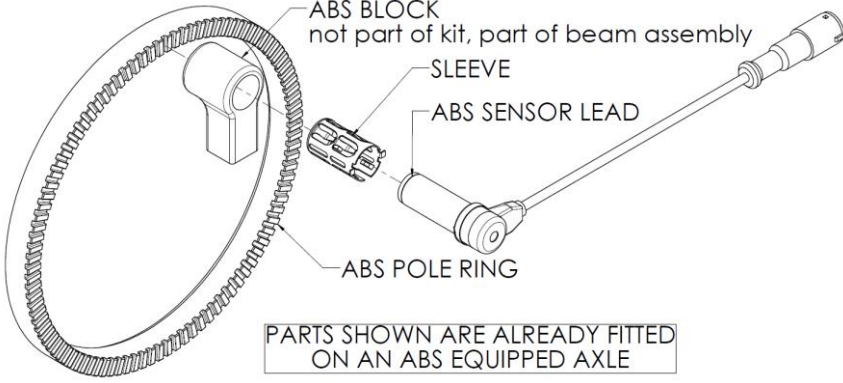
Ref No.	PART No.	DESCRIPTION	APPLICATON	
<b>BEAM OPTIONS</b>				
			<b>QUANTITY PER AXLE</b>	<b>1850</b>
				<b>TP</b>
				<input type="checkbox"/> 150x15
<b>1</b>	KF61BX12X1850S30	BEAM & CAM ASSY	1	<b>X</b>
<b>1</b>	KF61BX13X1850S30	BEAM & BRAKE ASSY	1	<b>X</b>
<b>BRAKE COMPONENTS</b>				
<b>2^^</b>	<i>C11-0101C-543LH</i>	<i>CAMSHAFT-LH (543mm) 1-5/8" 37sp</i>	1	<b>X</b>
<b>2^^</b>	<i>C11-0101C-543RH</i>	<i>CAMSHAFT-RH (543mm) 1-5/8" 37sp</i>	1	<b>X</b>
<b>2^^</b>	<i>C11-0101C-613LH</i>	<i>CAMSHAFT-LH (613mm) 1-5/8" 37sp</i>	1	<b>X</b>
<b>2^^</b>	<i>C11-0101C-613RH</i>	<i>CAMSHAFT-RH (613mm) 1-5/8" 37sp</i>	1	<b>X</b>
<b>3^^</b>	<i>C30-0102-543°</i>	<i>CAMTUBE</i>	2	<b>X</b>
<b>3^^</b>	<i>C30-0102-613°</i>	<i>CAMTUBE</i>	2	<b>X</b>
<b>3</b>	KH3310-1021	CAMTUBE – (Old Style)	2	
<b>4</b>	<i>C12-0101°</i>	WASHER, CAMSHAFT SPACER	2	<b>X</b>
<b>5</b>	<i>C14-0301°</i>	SEAL, CAMSHAFT OUTER	2	<b>X</b>
<b>5</b>	KH800161	SEAL, CAMSHAFT OUTER – (Old Style)	2	
<b>6</b>	<i>C13-0301°</i>	CAMSHAFT BUSH (SPIDER)	2	<b>X</b>
<b>6</b>	<i>C13-0101</i>	CAMSHAFT BUSH (SPIDER) – (Old Style)	2	
<b>7</b>	<i>C33-0101°</i>	CAMSHAFT, MTG PLATE	2	<b>X</b>
<b>8</b>	<i>C24-0101°</i>	O-RING, CAMTUBE INNER	2	<b>X</b>
<b>9</b>	<i>C15-0101°</i>	WASHER, CAMSHAFT SPACER	4	<b>X</b>
<b>9A</b>	<i>C15-0102°</i>	WASHER, SLACK ADJUSTER	2	<b>X</b>
<b>10</b>	<i>C16-0401°</i>	CIRCLIP, CAMSHAFT INNER	2	<b>X</b>
<b>10A</b>	<i>C16-0101°</i>	CIRCLIP, SLACK ADJUSTER	2	<b>X</b>
<b>11</b>	<i>D20-010101*</i>	SHOE SET (2)	2	<b>X</b>
<b>12</b>	NSS*	ROLLER	4	<b>X</b>
<b>13</b>	NSS*	ROLLER RETAINER	4	<b>X</b>
<b>14</b>	NSS*	RETURN SPRING	2	<b>X</b>
<b>14A</b>	NSS*	RETAINING PIN	4	<b>X</b>
<b>15</b>	NSS*	ANCHOR SPRING	2	<b>X</b>
<b>16</b>	NSS*	ANCHOR PIN	4	<b>X</b>
<b>17</b>	NSS*	ANCHOR PIN BUSH	4	<b>X</b>
<b>18</b>	A20-0101	RETURN SPRING, SLACK ADJUSTER	2	<b>X</b>
<b>19</b>	61137370EF	POSITIVE LOCK SLACK ADJUSTER	2	<b>X</b>
<b>19</b>	ASC23112	AUTO SLACK ADJUSTER (5"6"7" hole positions)	2	<b>O</b>
°PARTS CONTAINED IN KIT A				
*PARTS CONTAINED IN KIT B – REFER TO PAGE 4				

^^: Check the length of the s-cam shaft before you order and make sure you order the matching CAMTUBE.

# PARTS VIEW

Ref No.	PART No.	DESCRIPTION	APPLICATON			
			QUANTITY PER AXLE	10x285 22.5"	10x335 22.5"	5 SPOKE 22.5"
<b>HUB/DRUM COMPONENTS</b>						
				Ø420x180 (Ø16.5"x7") XEM	Ø420x180 (Ø16.5"x7") XEM	Ø420x180 (Ø16.5"x7") XEM
				TP	TP	TP
				KF61BG15	KF61BG16	KF61BG14
20	KH3600-0303	HUB/DRUM ASSY-Short stud	2	X		
20	KH3600-0303Z	HUB/DRUM ASSY-Long stud	2	X		
20	KH3600-0103	HUB/DRUM ASSY-Short stud	2		X	
20	KH3600-0103Z	HUB/DRUM ASSY-Long stud	2		X	
20	KH3600/FF	HUB/DRUM ASSY	2			X
21	KH3601-0302	HUB ASSY – Short stud	2	X		
21	KH3601-0302Z	HUB ASSY – Long stud	2	X		
21	KH3601-0101	HUB ASSY – Short stud	2		X	
21	KH3601-0101Z	HUB ASSY – Long stud	2		X	
21	KH3601/FF	HUB ASSY	2			X
22	KH3602-0303	DRUM	2	X		
22	KH3602-0101	DRUM	2		X	
22	KH3602/FF	DRUM	2			X
<b>WHEEL END COMPONENTS</b>						
23	KH800106 (H37-0101)	STUD ¾" NC	10			X
23	KH800104 (H33-0301)	STUD SHORT (M22x94)	20	X	X	
23	KH800239 (H33-0302)	STUD LONG (M22x122)	20	X	X	
24	KH800098 (H38-0101)	NUT ¾" NC	10			X
24	KH800096 (H34-0301)	NUT M22 x 32 A/F	20	X	X	
24	KH800238 (H34-0302)	NUT M22 x 33 A/F	20	O	O	
24	H34-0901	NUT M22 x 32 A/F – 50mm long	20	O	O	
25	KH800146 (H39-0101)	RIM CLAMP	10			X
26	H12-0100	BEARING INNER	2	X	X	X
26	H12-0100	BEARING OUTER	2	X	X	X
27	373-0223 (801)	SEAL (off-road)	2	X	X	X
28	H18-0101	DUST COVER	2	X	X	X
29	KH800055	SPRING WASHER	12	X	X	X
30	M8X16X1.75	BOLT – DUST COVER – M8	12	X	X	X
31	A11-0101	WASHER (BEARING)	2	X	X	X
32	A13-0101	COTTER PIN	2	X	X	X
33	A12-0101	NUT SPINDLE	2	X	X	X
34	H15-0201	O-RING – HUB CAP	2	X	X	X
35	KH800205B	HUB CAP – SCREW ON – BLACK	2	X	X	X
36	NSS	BOLT – ¾" UNF x 2-¼" – GR8	10			X
37	NSS	CONELock NUT – ¾" UNF – GR8	10			X

# PARTS VIEW

Ref #	KIT Part No.	Component Part No.	DESCRIPTION	QTY/ AXLE	QTY/ KIT	APPLICATION
<b>A</b>	<b>C30-0102-613K</b>		<b>CAM TUBE KIT (suit 1 cam)</b>	<b>2</b>		<b>KIT SUITS: TP 1850mm TRACK AXLE</b>
		C30-0102-613	CAMTUBE ASSY		1	
		C12-0101	WASHER, CAMSHAFT SPACER		1	
		C14-0301	SEAL, CAMSHAFT OUTER		1	
		C13-0301	CAMSHAFT BUSH (SPIDER)		1	
		C33-0101	CAMSHAFT, MTG PLATE		1	
		C24-0101	O-RING, CAMTUBE INNER		1	
		C15-0101	WASHER, CAMSHAFT SPACER		2	
		C15-0102	WASHER, SLACK ADJUSTER		1	
		C16-0401	CIRCLIP, CAMSHAFT INNER		1	
		C16-0101	CIRCLIP, SLACK ADJUSTER		1	
<b>B</b>	<b>D20-010101K</b>		<b>BRAKE SHOE KIT (1 wheel)</b>	<b>2</b>		<b>KIT SUITS: KF61 AXLE</b>
		D20-010101	SHOE SET (1 wheel)		1	
		NSS	ROLLER		2	
		NSS	ROLLER RETAINER		2	
		NSS	RETURN SPRING		1	
		NSS	RETAINING PIN		2	
		NSS	ANCHOR SPRING		1	
		NSS	ANCHOR PIN		2	
		NSS	ANCHOR PIN BUSH		2	
<b>C</b>	<b>ABSKIT-03</b>		<b>ABS KIT</b>	<b>1</b>		<b>KIT SUITS: TP AXLE</b>
		A15-0101	ABS SENSOR LEAD (400mm)		2	
		A16-0101	SLEEVE		2	
		H41-0401	ABS POLE RING – 100 Tooth – Ø165ID – 216PCD		2	
 <p>PARTS SHOWN ARE ALREADY FITTED ON AN ABS EQUIPPED AXLE</p>						

- Note: TP – parallel spindle (two bearings the same)  
 X: Standard | NSS: Not Sold Separately | O: Optional  
 Hub Cap: May vary (Oil hubs, Customer specs & Hub-odometer may require different hub caps)
1. Studs may be short or long, check before you order.
  2. Long Nut # H34-0901 (32mm A/F) can be used on long studs with steel wheels.