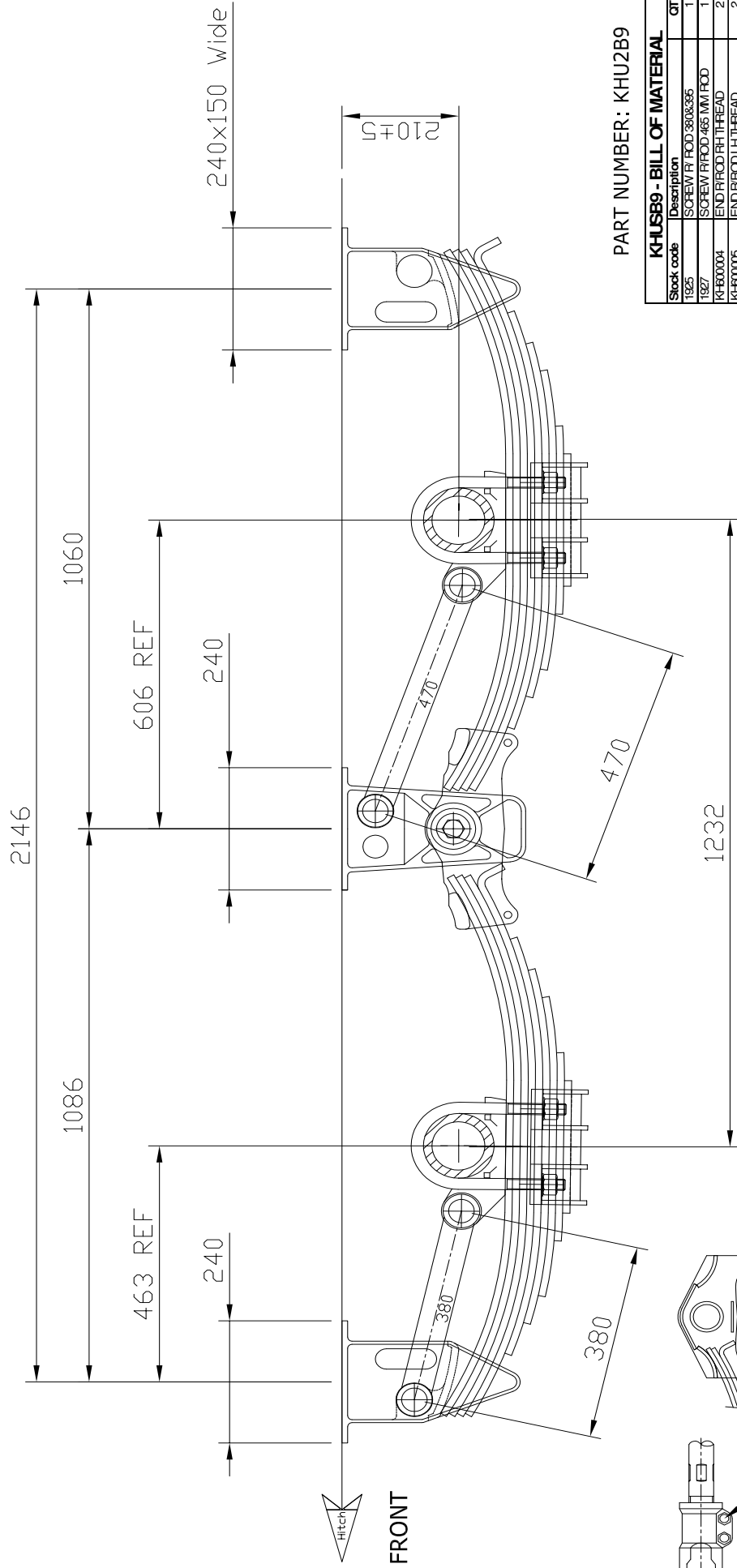


IF IN DOUBT ASK, DO NOT SCALE

CERTIFICATION UNIT ID:
 SINGLE: SARN - 26585
 TANDEM: SARN - 17051
 TRIAXLE: SARN - 26584



PART NUMBER: KHU2B9

KHU2B9 - BILL OF MATERIAL		
Stock code	Description	QTY
T925	SCREW R/F ROD 380x385	1
T927	SCREW R/F ROD 465 MM ROD	1
KH800004	END R/F ROD RHT THREAD	2
KH800005	END R/F ROD LHT THREAD	2
KH855003	PIN ASSY R/F ROD W/BUSHES	8
KH855004/245	U BOLT M22x245MM U/S LUNG	8
KH800007	ROCKER EQUILIBRATOR	2
KH800188	PIN ASSY EQ ROCKER W/BUS	2
KH800027	SEAT SPRING ULTRA LOW	4
KH800036	HANGER EQUAL 1232MM US	2
KH800037	HANGER FRONT & REAR USL	4
KH800038	PL BOTTOM CLAMP U/S LUNG	4
KH80100380	RADIUS ROD FIXED 380MM	1
KH80100470	RADIUS ROD FIXED 470MM	1
KH812120715	BOLT M12X120X1.75 SPRING RET	4
KH81215	NUT M12 X1.75 HEX N/LOC	12
KH8124515	BOLT R/F ROD END CLAMP M12	8
LFGR0X	LARGE BOX	1
KH800026	SPRING ASSY 9 LEAF PACK	4

FUJWA K HITCH AUSTRALIA PTY. LTD.



THIS DRAWING AND ALL INFORMATION ON THIS DRAWING IS THE PROPERTY OF: FUJWA K HITCH AUSTRALIA PTY LTD. AND MAY NOT BE COPIED IN ANY WAY OR FORM WITHOUT THE WRITTEN CONSENT OF: FUJWA K HITCH AUSTRALIA PTY LTD.

TORQUE SETTING

- TORQUE ARM PIN NUTS = 150/200 Nm
- TORQUE ARM CLAMP BOLTS = 90/100 Nm
- EQUALISER SHAFT NUTS = 290/350 Nm
- 'U' BOLTS NUTS = 500/540 Nm
- DROP OUT BOLTS = 75/85 Nm

NOTE: -

- ADR 38 COMPLIANCE NUMBER - 17051
- SUSPENSION INSTALLATION SLOPE:
- SUSPENSION MOUNTING SURFACE MUST BE HORIZONTAL $\pm 0.5^\circ$.
- SUSPENSION CAPACITY: 20 TONNE.
- SUSPENSION SPRING DEFLECTION: 1.70mm/tonne.
- ESTIMATED TARE WEIGHT = 435 kg.

DRAWN: MM DATE: March 06
 CHECKED: 05 SCALE: 1:1
 DWG NO: KH682AUR59

9 LEAF TANDEM AXLE
 210mm RIDE HEIGHT
 CAST MECH. SUSP.

A4 REV B