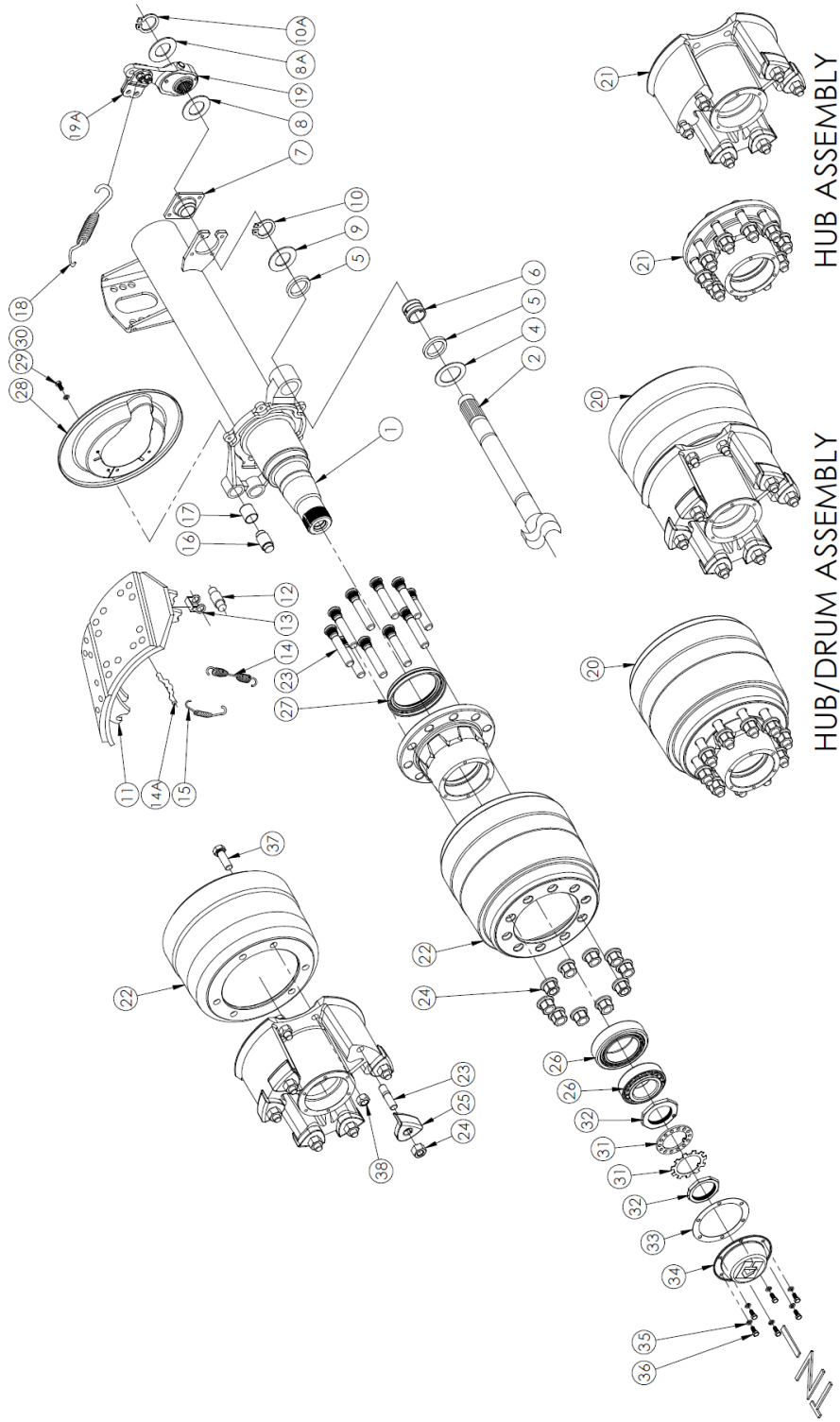


PARTS VIEW

KK44 DRUM BRAKE AXLE (Low Loader)



IMAGES FOR ILLUSTRATION PURPOSES ONLY

PARTS VIEW

Ref No.	PART No.	DESCRIPTION	APPLICATION			
			1850	1820	1956	
BEAM OPTIONS						
			QUANTITY PER AXLE	TN	TN	TN
1	N/A	BEAM & CAM ASSY	1	X		
1	N/A	BEAM & CAM ASSY	1		X	
1	N/A	BEAM & CAM ASSY	1			X
1	KK44AX13X1850N32	BEAM & BRAKE ASSY	1	X		
1	KK44AX13X1820N32	BEAM & BRAKE ASSY	1		X	
1	KK44AX13X1956N32	BEAM & BRAKE ASSY	1			X
BRAKE COMPONENTS						
2	KH3304-2011	CAMSHAFT-LH (605mm) 10sp	1	X	X	X
2	KH3304-2012	CAMSHAFT-RH (605mm) 10sp	1	X	X	X
3						
4	C12-0301 [°]	WASHER, Camshaft Spacer	2	X	X	X
5	C24-0501 [°]	SEAL, CAMSHAFT OUTER	4	X	X	X
6	C13-0401 [°]	CAMSHAFT BUSH (SPIDER)	2	X	X	X
7	C20-0201 [°]	BEARING ASSEMBLY – CAMSHAFT	2	X	X	X
8	C15-0102 [°]	WASHER, SLACK ADJUSTER (thin)	2	X	X	X
8A	C15-0108 [°]	WASHER, SLACK ADJUSTER (thick)	2	X	X	X
9	C15-0103 [°]	WASHER, CAMSHAFT SPACER	2	X	X	X
10	C16-0401 [°]	CIRCLIP, CAMSHAFT INNER	2	X	X	X
10A	C16-0601 [°]	CIRCLIP, SLACK ADJUSTER	2	X	X	X
11	D20-050101*	SHOE SET (2)	2	X	X	X
12	NSS*#	ROLLER	4	X	X	X
13	NSS*#	ROLLER RETAINER	4	X	X	X
14	NSS*#	RETURN SPRING	2	X	X	X
14A	NSS*#	RETAINING PIN	4	X	X	X
15	NSS*#	ANCHOR SPRING	2	X	X	X
16	NSS*#	ANCHOR PIN	4	X	X	X
17	NSS*#	ANCHOR PIN BUSH	4	X	X	X
18	A20-0101	RETURN SPRING, SLACK ADJUSTER	2	X	X	X
19	278323EF	POSITIVE LOCK SLACK ADJUSTER	2	X	X	X
19A	A31-0301	SLACK ADJUSTER ADAPTOR KIT	2	X	X	X
[°] PARTS CONTAINED IN KIT A – *PARTS CONTAINED IN KIT B – #PARTS CONTAINED IN KIT C - REFER TO PAGE 4						

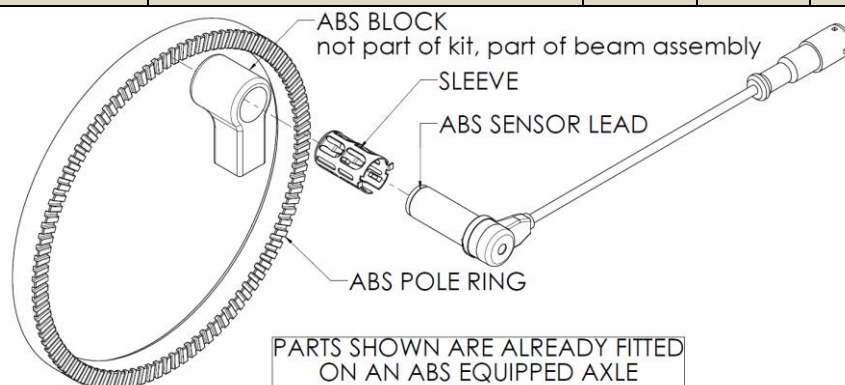


PARTS VIEW

Ref No.	PART No.	DESCRIPTION	APPLICATION		
			HUB/DRUM OPTIONS		
			QUANTITY PER AXLE	10x225 17.5"	3 SPOKE 15"
				Ø311x190 (Ø12.25"x7.5") Standard	Ø311x190 (Ø12.25"x7.5") Standard
				TN	TN
				KK44AG15	KK44AG14
20	H30-9401	HUB/DRUM ASSY-Short stud	2	X	
20	H30-9401Z	HUB/DRUM ASSY-Long stud	2	X	
20	001-70003	HUB/DRUM ASSY	2		X
21	H31-9401	HUB ASSY – Short stud	2	X	
21	H31-9401Z	HUB ASSY – Long stud	2	X	
21	001-7000	HUB ASSY	2		X
22	H32-9401	DRUM	2	X	
22	52743-11	DRUM	2		X
		WHEEL END COMPONENTS			
23	H37-0101	STUD ¾" UNC	12		X
23	KH800104 (H33-0306)	STUD (M22x100)	20	X	
23	KH800239 (H33-0302)	STUD LONG (M22x122)	20	X	
24	H38-0101	NUT ¾" UNC	12		X
24	KH800096 (H34-0301)	NUT M22 x 32 A/F	20	X	
24	KH800238 (H34-0302)	NUT M22 x 33 A/F	20	O	
24	H34-0901	NUT M22 x 32 A/F – 50mm long	20	O	
25	NSS	RIM CLAMP	12		X
26	H12-0400	BEARING OUTER	2	X	X
26	H12-0300	BEARING INNER	2	X	X
27	373-0243	SEAL	2	X	X
28	H18-0204	DUST COVER	2	X	X
29	KH800055	SPRING WASHER	12	X	X
30	M8X16X1.75	BOLT – DUST COVER – M8	12	X	X
31	A25-0101	LOCK TAB	2	X	X
31	A11-0201	LOCK WASHER	2	X	X
32	A12-0201	NUT SPINDLE - INNER	2	X	X
32	A24-0101	NUT SPINDLE - OUTER	2	X	X
33	KH330-3009	GASKET - HUB CAP	2	X	X
34	KH800110B	HUB CAP – BLACK – Ø139.7PCD	2	X	X
35	KH800055	WASHER - HUB CAP BOLT	12	X	X
36	KH800122	BOLT - HUB CAP – 5/16"	12	X	X
37	NSS	BOLT – 5/8" UNF x 2" – GR8	12		X
38	NSS	CONELock NUT – 5/8" UNF – GR8	12		X

PARTS VIEW

Ref #	KIT Part No.	Component Part No.	DESCRIPTION	QTY/ AXLE	QTY/ KIT	APPLICATION
A	-		CAM SHAFT BUSH REPAIR KIT (suit 1 cam)	2		KIT SUITS: KK44 AXLE
		C12-0301	WASHER, Camshaft Spacer		2	
		C24-0501	SEAL, CAMSHAFT OUTER		4	
		C13-0401	CAMSHAFT BUSH (SPIDER)		2	
		C20-0201	BEARING ASSEMBLY – CAMSHAFT		2	
		C15-0102	WASHER, SLACK ADJUSTER (thin)		2	
		C15-0108	WASHER, SLACK ADJUSTER (thick)		2	
		C15-0103	WASHER, CAMSHAFT SPACER		2	
		C16-0401	CIRCLIP, CAMSHAFT INNER		2	
		C16-0601	CIRCLIP, SLACK ADJUSTER		2	
B	-		BRAKE SHOE KIT (1 wheel)	2		KIT SUITS: KK44 AXLE
		D20-050101	SHOE SET (1 wheel)		1	
		NSS	ROLLER		2	
		NSS	ROLLER RETAINER		2	
		NSS	RETURN SPRING		1	
		NSS	REATAINING PIN		2	
		NSS	ANCHOR SPRING		1	
		NSS	ANCHOR PIN		2	
		NSS	ANCHOR PIN BUSH		2	
C	D20-050101H		BRAKE SHOE HARDWARE KIT	2		KIT SUITS: KK44 AXLE
		NSS	ROLLER		2	
		NSS	ROLLER RETAINER		2	
		NSS	RETURN SPRING		1	
		NSS	RETAINING PIN		2	
		NSS	ANCHOR SPRING		1	
		NSS	ANCHOR PIN		2	
		NSS	ANCHOR PIN BUSH		2	
D	ABSKIT-04		ABS KIT	1		KIT SUITS: KK44 AXLE
		A15-0101	ABS SENSOR LEAD (400mm)		2	
		A16-0101	SLEEVE		2	
		H41-0501	ABS POLE RING – 80 Tooth – Ø162ID		2	



Note: TN – tapered spindle (small & big bearing)
 X: Standard | NSS: Not Sold Separately | O: Optional
 Hub Cap: May vary (Oil hubs, Customer specs & Hub-odometer may require different hub caps)
 1. Studs may be short or long, check before you order.
 2. Long Nut # H34-0901 (32mm A/F) can be used on long studs with steel wheels.