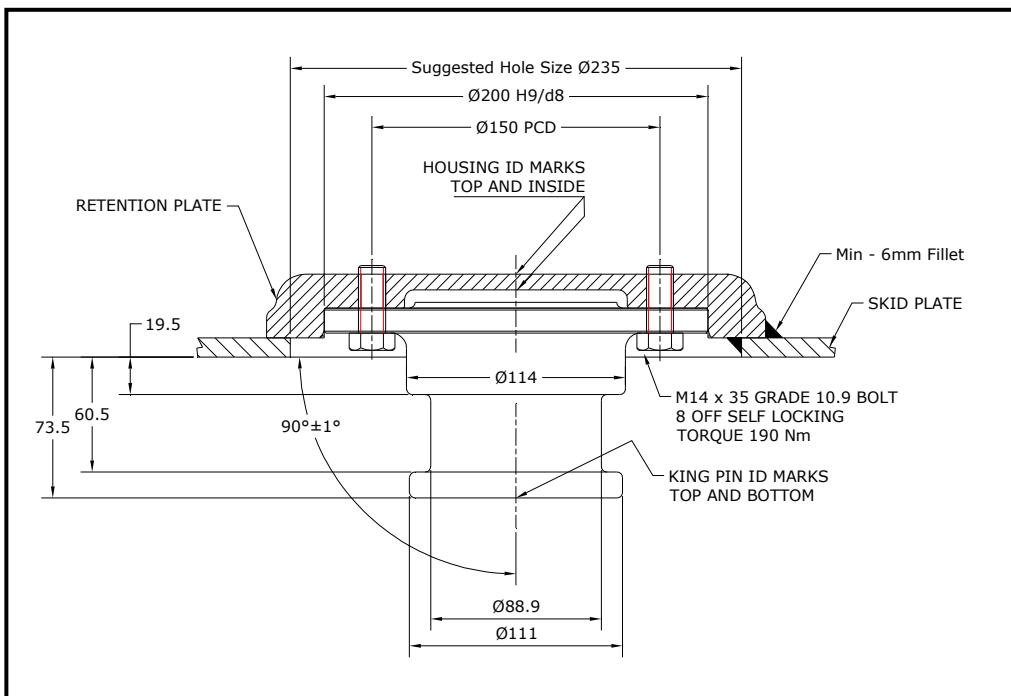
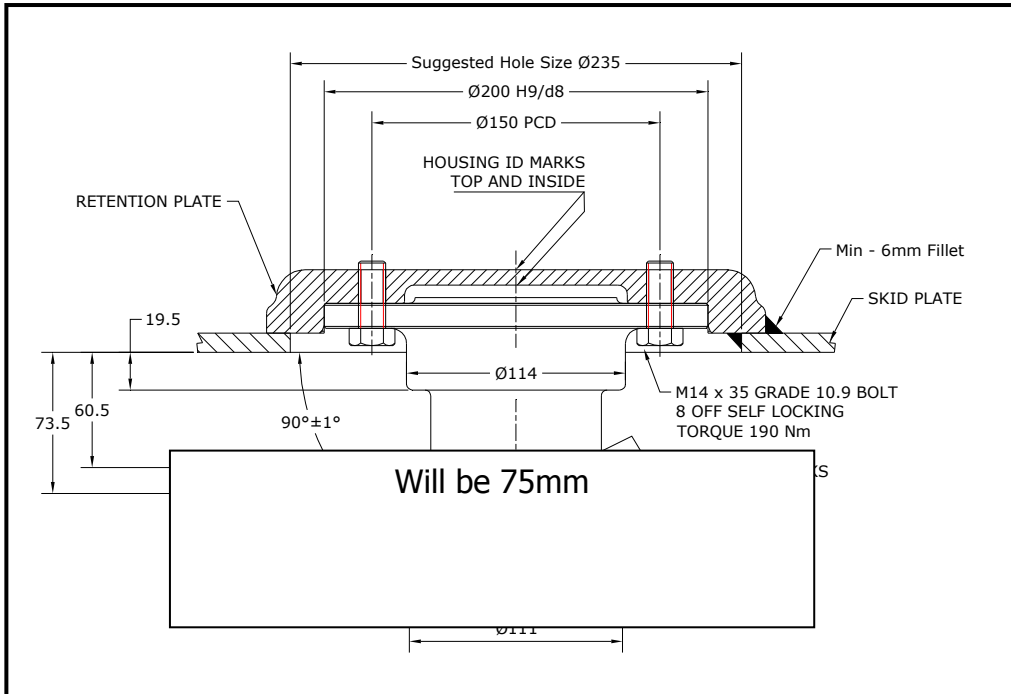




# INSTALLATION, MAINTENANCE & SERVICE BULLETIN



# INSTALLATION, MAINTENANCE & SERVICE BULLETIN

## MAINTENANCE

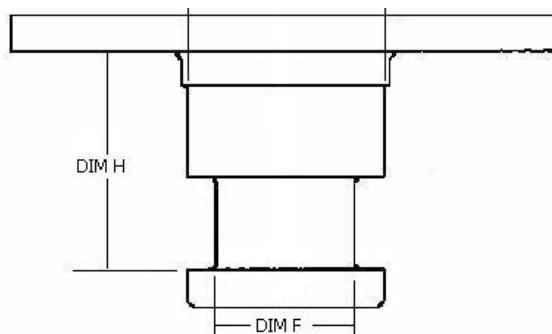
- Inspect king pin and skid plate when completing 5th wheel monthly service
- Check for damage and wear.
- Check retaining bolt torque every 10,000km.

**Note:** If excessive wear is detected on the king pin (check wear limits) or the skid plate is scored it is probable that the 5th wheel jaws and top plate on the 5<sup>th</sup> wheel will bear corresponding wear/scoring. Repair or replace the items as necessary to maintain the integrity of the 5<sup>th</sup> wheel connection and stay within the allowable wear limits.

## WEAR LIMITS

King pin dimensions should be checked at regular intervals and should be replaced if wear limits are exceeded.

KING PIN SIZE	DIMENSION	STANDARD	WEAR LIMITS
50mm	F	50.08 ± 0.1 mm	49 mm minimum
	G	73.00 ± 0.1 mm	71 mm minimum
	H	70.00 + 1.5 mm	73 mm maximum
75mm	F		
	G		
	H		
90mm	F	89.00 ± 0.1 mm	86 mm minimum
	G	114.00 ± 0.1 mm	112 mm minimum
	H	59.00 + 1.5 mm	62 mm maximum



**Note:** Re-machining of king pins or 'building-up' of king pins by welding to achieve or restore required dimensions is *not* an acceptable practice.

**Bulletin No: KPM-006-0310**

**For Product Support call: 03 9369 000 / 07 3272 8322 / 08 9353 3655**

**www.khitch.com.au**