

KING PINS



12 MONTH
WARRANTY

HANDLE THE HARSHTEST CONDITIONS

K Hitch manufactures a full range of quality "D" rated King Pins. To ensure optimum performance, use only quality K Hitch King Pins and fifth wheels.

PLEASE NOTE WARRANTY IS SUBJECT TO FUWA KHITCH (AUSTRALIA) PTY LTD WARRANTY TERMS AND CONDITIONS

SPECIFICATIONS:

KING PINS

- 50mm, 75mm and 90mm - Demountable type rated to 240kN - Weld In type rated from 174kN to 340kN
- Induction hardening available for 90mm king pins

BOLT CONFIGURATION

- 8 holes - 14mm Diameter on 150mm Pitch Circle Diameter Bolts (M14) - Grade 10.9 Studlock 'locktite'
- Bolts to be torqued to correct specifications

MOUNTING FLANGE PLATES

- Suits 8mm, 10mm, 12mm, 16mm and 20mm skid plates
- Flange Diameter - 200mm (All Demountable King Pins are interchangeable on the mounting plate housing)

FEATURES:

KING PINS

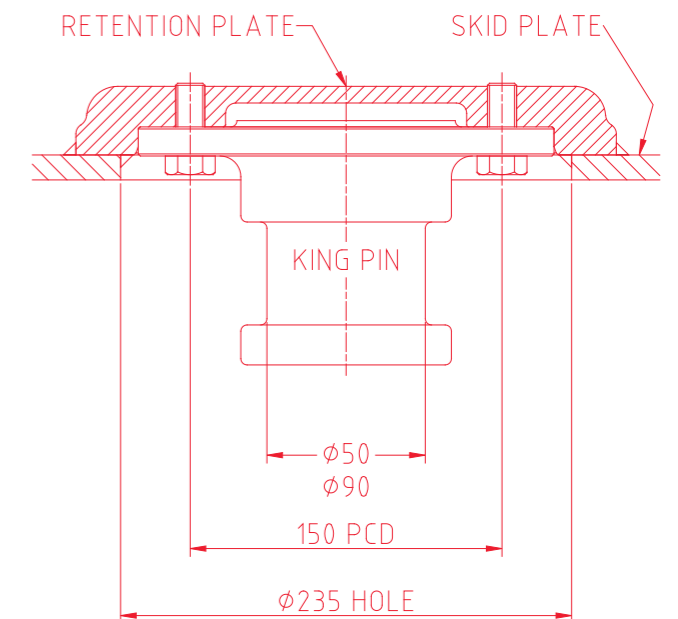
- Demountable King Pins 50mm and 90mm rated to 240kN
- 50mm-90mm Weld in type rated to 174kN to 340kN
- Complies with Australian Standards AS/NZ 4968.3:2003 and Australian Design Rule ADR 62/01
- Interchangeable with most other brands

KING PIN SETS INCLUDE

- King Pin retention plate and bolt kit

Make the right moves with the **K Hitch** king Pin

The K Hitch flanged demountable **KING PIN** offers greater versatility combined with strength, safety and value for money. Manufactured from high tensile drop forgings and heat-treated, the K Hitch demountable King Pin complies with all Australian statutory requirements. The K Hitch demountable King Pin was designed to meet the demands of Australia's harsh outback conditions from single trailer to B-Double and triple road train applications.



K Hitch manufactures "D" rated King Pins to suit heavy duty mining applications. All K Hitch King Pins are suitable for all applications including single trailer, B-Double and triple road trains.

SPECIFICATIONS ARE SUBJECT TO CHANGE AT ANY TIME WITHOUT PRIOR NOTICE.