

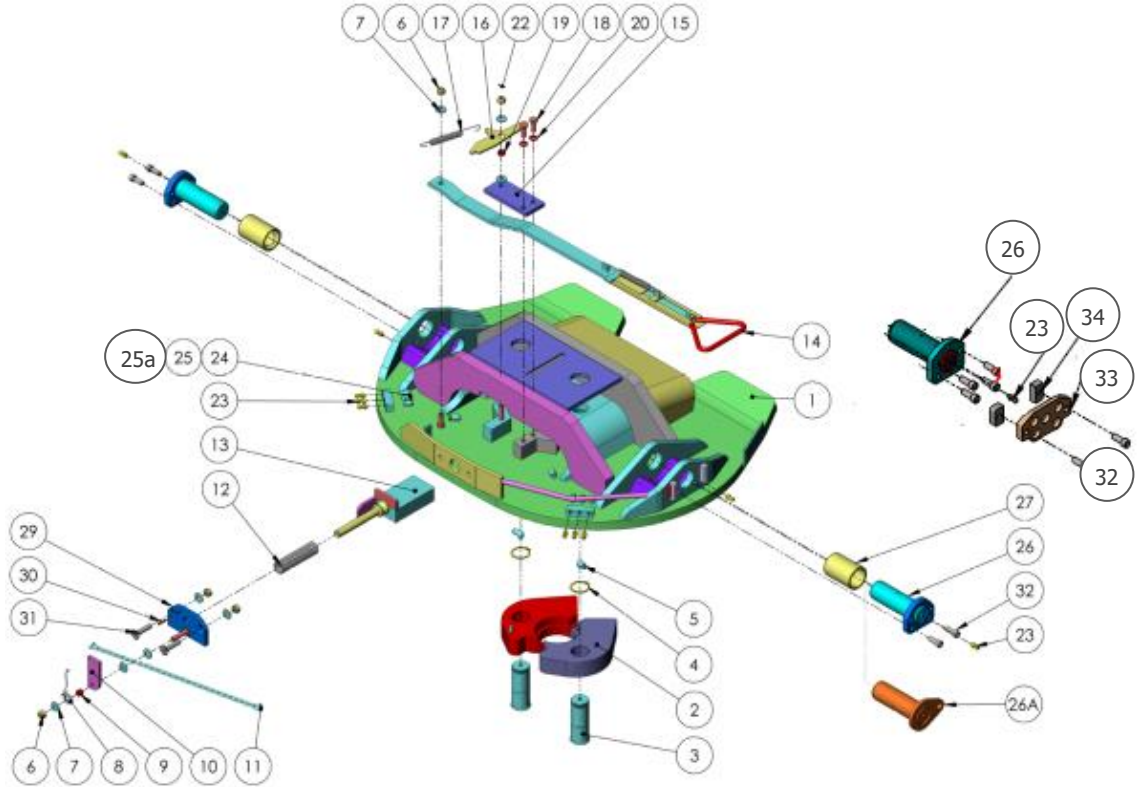
# PARTS VIEW

**KOMODO 40 - KS15E**

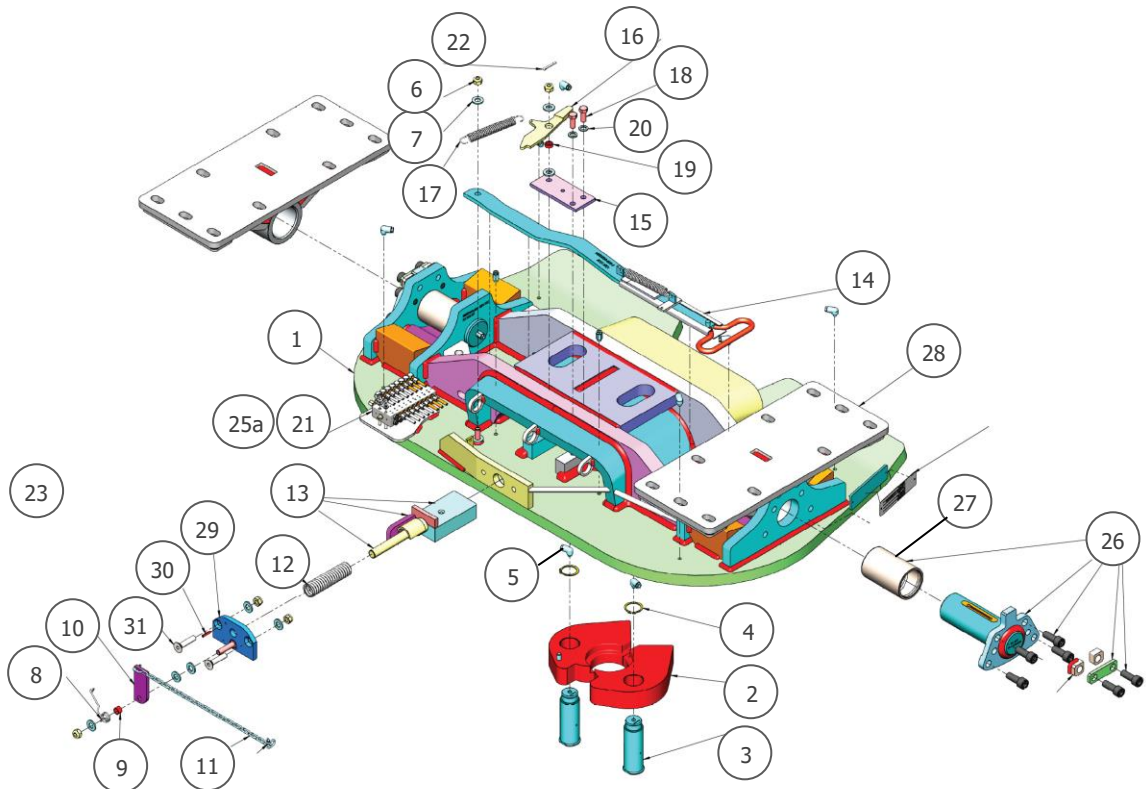
**KOMODO 50 - KD**

**KOMODO 75 - KS16F**

**KS15E**

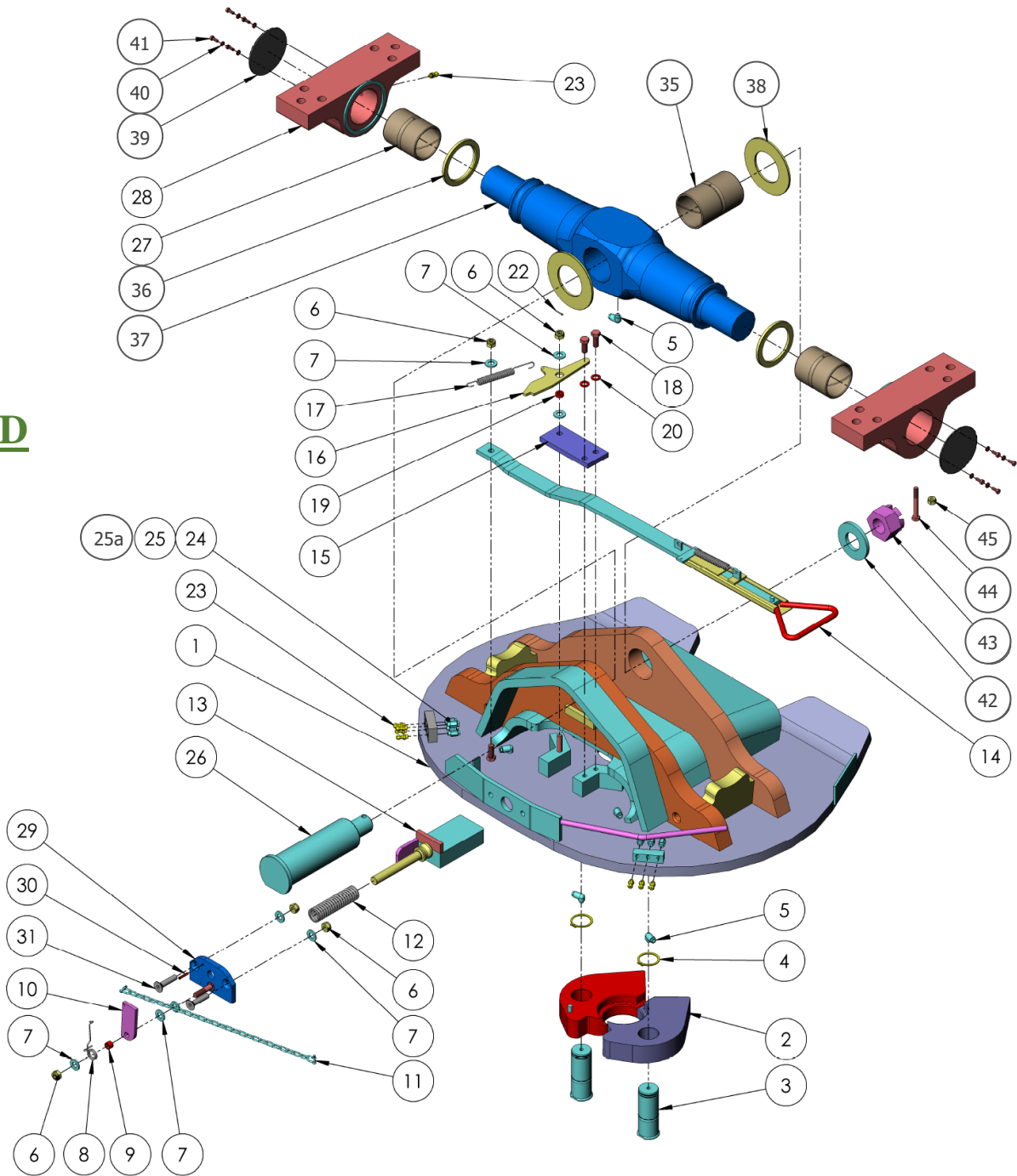


**KS16F**



# PARTS VIEW

**KD**



## PARTS VIEW

Ref No.	PART No.	DESCRIPTION	APPLICATION			
			QTY PER TURNTABLE	KS15E Komodo40	KS16F Komodo75	KD Komodo50
1	NSS	BASE PLATE ASSY	1	X	X	X
2	KHOC032	JAW SET, 90mm	1	X	X	X
3	KH002	PIN, JAW PIVOT	2	X	-	X
3	N500059-001	PIN, JAW PIVOT	2	-	X	-
4	KH003	CIRCLIP	2	X	-	X
4	C16-0501	CIRCLIP	2	-	X	-
5	780034	HD GREASE FITTING 90°	2	X	X	X
6	NSS	NYLOC NUT – M12	A/R	X	X	X
7	NSS	WASHER	A/R	X	X	X
8	KH021	SPRING, SAFETY LEVER	1	X	X	X
9	KH026	SPACER	1	X	X	X
10	KH015	SAFETY LATCH	1	X	X	X
11	KH019	CHAIN ASSY	1	X	X	X
12	KH012	SPRING, WEDGE	1	X	X	X
13	KHOC028	WEDGE	1	X	-	X
13	N500062-001	WEDGE	1	-	X	-
14	KH028	HANDLE ASSY	1	X	-	X
14	N500030-005	HANDLE ASSY	1	-	X	-
15	KHOC044	WEDGE RETAINING PLATE	1	X	-	X
15	N500063-001	WEDGE RETAINING PLATE	1	-	X	-
16	KHOC045	TRIGGER	1	X	X	X
17	KH006	SPRING	2	X	X	X
18	NSS	BOLT - M12 x 30	2	X	X	X
19	KHOC027	BUSH – TRIGGER ARM	1	X	X	X
20	NSS	SPRING WASHER	2	X	X	X
21	GS-101 ***	1 POINT GREASE SYSTEM	1	-	X	-
22	NSS	SPLIT PIN	1	X	X	X
23	NSS	1/8 BSP GREASE NIPPLE	A/R	X	X	X
24	NSS	1/4 x 1/8 CONNECTOR MALE	A/R	X	X	X
25	NSS	NYLON TUBE	A/R	X	X	X
25a	797004	HD GREASE LINE	A/R	2	6	2
26	N500035-001	PIN (from 2013)	2	X	-	-
26A	KH137	PIN (until 2012)	2	X	-	-
26	KHOC003	PIN	1	-	-	X
26	N500055-001	PIN & BUSH KIT	2	-	X	-
27	KH126	BUSH	2	X	-	-
27	KHOC006	BUSH	2	-	-	X
27	N500056-001	BUSH	2	-	X	-
28	N500031-001	FOOT	2	X	-	-
28	KHOC002	FOOT	2	-	-	X
28	N500054-001	FOOT	2	-	X	-
29	KHOC034	PLATE ASSM-Wedge Guide	1	X	X	X
30	NSS	PIN - Ø5 x 26	1	X	X	X
31	KHOC026	SCREW, C/SUNK M12	2	X	X	X
32	N100037-001	BOLT	4 (12)	X X (from 2018)	-	-
33	N500058-002	RETAINING PLATE	2	X (from 2018)	-	-
34	798008	BLOCK	4	X (from 2018)	-	-



# PARTS VIEW

Ref No.	PART No.	DESCRIPTION	APPLICATION		
			QTY PER TURNTABLE		KD Komodo50
35	KHOC007	BUSH	1		X
36	KHOC008	THRUST WASHER	2		X
37	KHOC005	PIVOT ARM	1		X
38	KHOC031	THRUST WASHER	2		X
39	KHOC009	END COVER	2		X
40	KHOC020	SPRING WASHER – M6	8		X
41	NSS	SET SCREW – M6 x 16	8		X
42	KHOC004	WASHER	1		X
43	KHOC018	NUT, CASTELLATED – M42	1		X
44	KHOC019	BOLT – M10 x 80	1		X
45	NSS	NYLOC NUT – M10	1		X

**Note:** X: Standard  
 NS: Not Shown  
 NSS: Not Sold Separately  
 \*\*\*: The GS-101 is the complete 1 point grease system (Metering block, fittings, tube)