



FUWA K HITCH (Australia) Pty Ltd

ABN 54 078 731 209

Head Office

Melbourne

13-21 Bliss Court
Derrimut VIC 3030
Tel. 03 9369 0000
Fax. 03 9369 0100

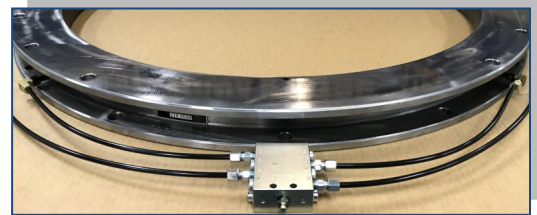
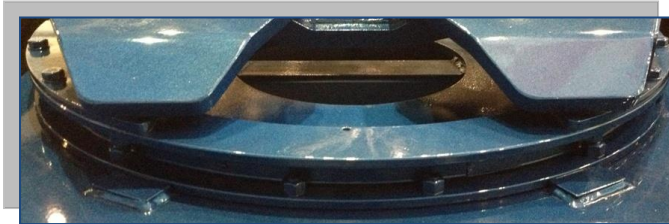
Queensland

41 Moreton
Heathwood Qld 4110
Tel. 07 3372 2223
Fax. 07 3372 1022

Perth

77B Kurnall Road
Welshpool WA 6106
Tel. 08 9350 6470
Fax. 08 9350 6570

SALES SPEC SHEET BALLRACE



New

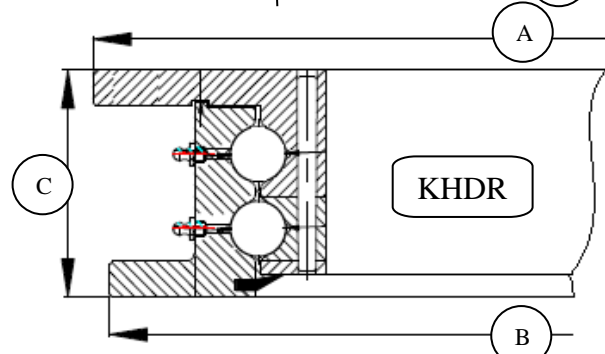
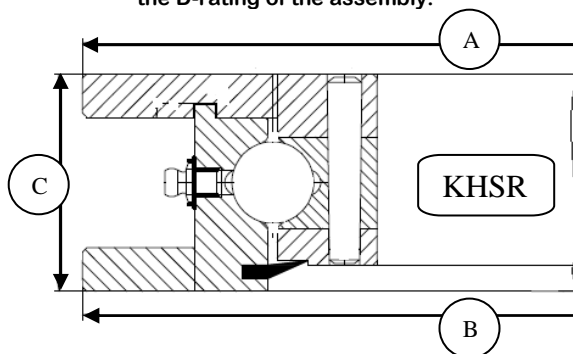
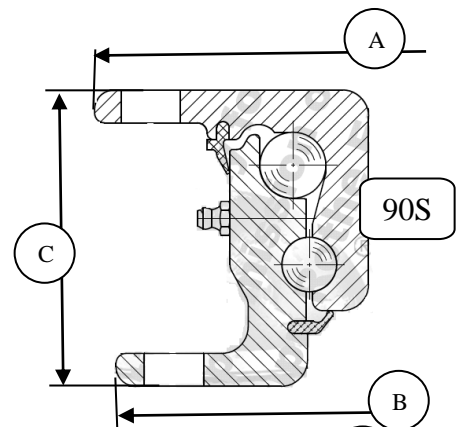
Progressive Feeder – One lube point...see P2.

The Ballraces supplied by **FUWA K Hitch** are designed and manufactured to the highest manufacturing standards.

The range of Ball races has been selected specifically to suit the Australian transport conditions and compliment the FUWA K Hitch range of turntables. The two designs are ideally suited to balance performance and value.

Note: The Ballraces can be supplied with the mounting holes already drilled.

Note: As Ballraces are considered “fixed” couplings, they do not require a CRN. When using a Ball race together with a Turntable, the lower D-rating of the two items, will become the D-rating of the assembly.



Model	Style	Size (mm)	Capacity (vertical down load in kg)	D-Rating (kN)	A (mm)	B (mm)	C (mm)	Weight (kg)
90S/1000	Seamless rolled rings	90x1000	16,000	190**	1000	987	90	82
90S/1100	Seamless rolled rings	90x1100	20,000	260**	1108	1095	90	92
KHSR1000	Slewing rings	60x1000	30,000	260**	1000	1000	60	74
KHDR987/1000	Slewing rings	90x1000	50,000	460**	1000	987	90	94
KHDR1000	Slewing rings	90x1000	50,000	480**	1000	1000	90	107
KHDR1100	Slewing rings	90x1100	60,000	520**	1100	1100	90	111

Note: Specifications may change without notice. For detailed dimensions contact FKH.

** : The D-Rating is not considering the mounting of the Ball Race to the chassis. Suitable nuts and bolts are the responsibility of the Installer.



FUWA K HITCH (Australia) Pty Ltd

ABN 54 078 731 209

**Head Office
Melbourne**
13-21 Bliss Court
Derrimut VIC 3030
Tel. 03 9369 0000
Fax. 03 9369 0100

Queensland
41 Moreton
Heathwood Qld 4110
Tel. 07 3372 2223
Fax. 07 3372 1022

Perth
77B Kurnall Road
Welshpool WA 6106
Tel. 08 9350 6470
Fax. 08 9350 6570

PROGRESSIVE FEEDER



The progressive feeder can be installed to all the FKH ball races in combination with the appropriate fitting kit.

4 or 8 grease points can be supplied with lube from one grease nipple with each grease point receiving the same amount of lube.

(Note: Please check availability, before ordering)

BALL RACE SERVICE INFORMATION

BULLETIN NUMBER	TOPIC	DESCRIPTION
KPW-002-0110	Warranty	Limitation of Liabilities
KPW-004-0110		LGL's
KPM-001-0110		Claim Form
KPM-002-0304	Installation	Installation, Maintenance & Service Bulletin Application specific engineering drawings are available upon request.
KPM-001-1212	Parts	Installation, Maintenance & Service Bulletin
KPM-002-0304	Maintenance	Installation, Maintenance & Service Bulletin

Bulletins:

All Bulletins are on: www.khitch.com.au
...or call FKH at your nearest location.

