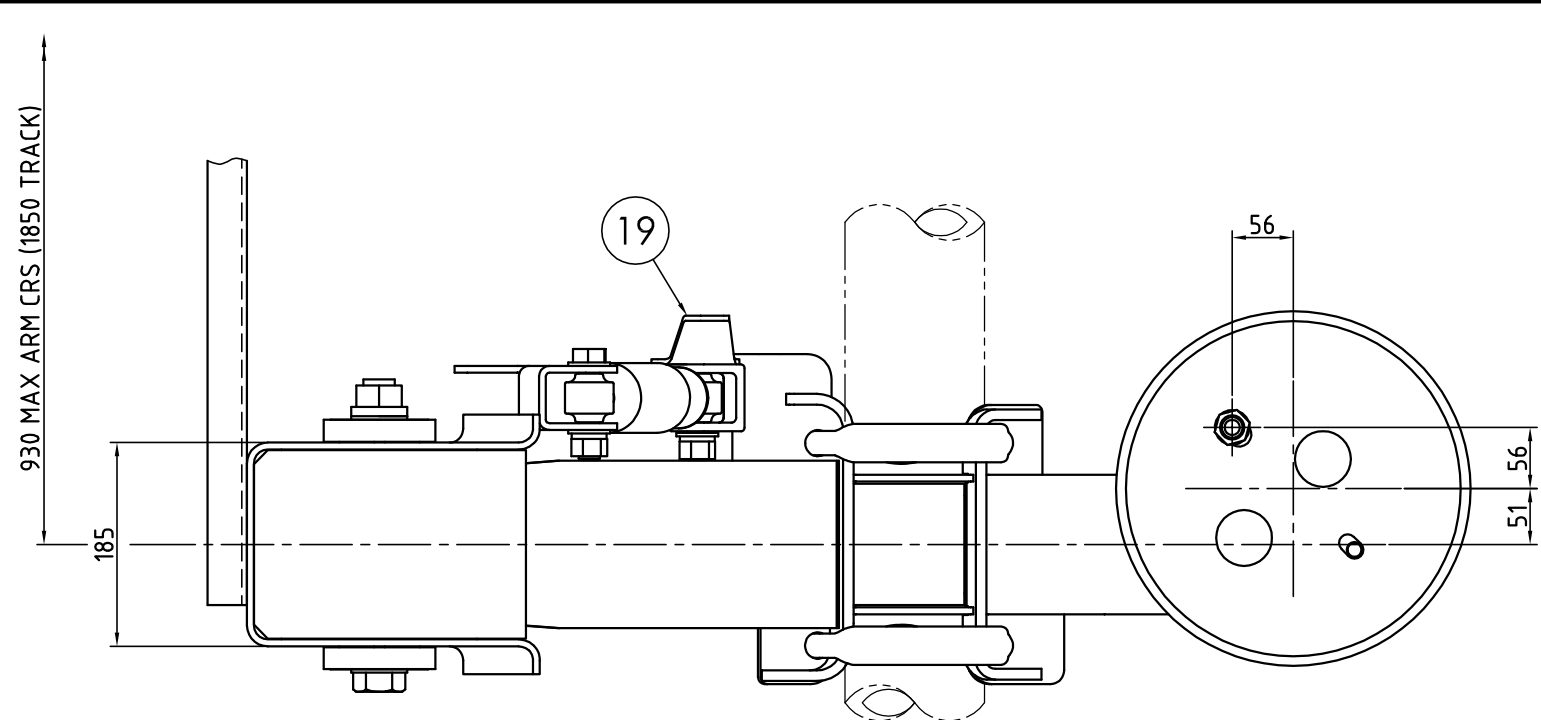
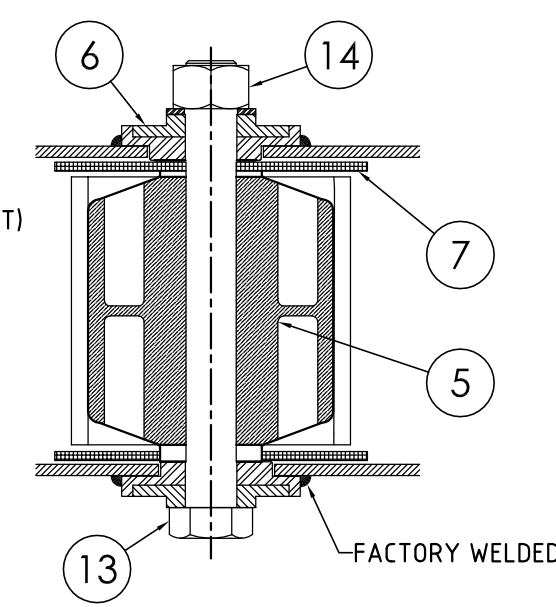
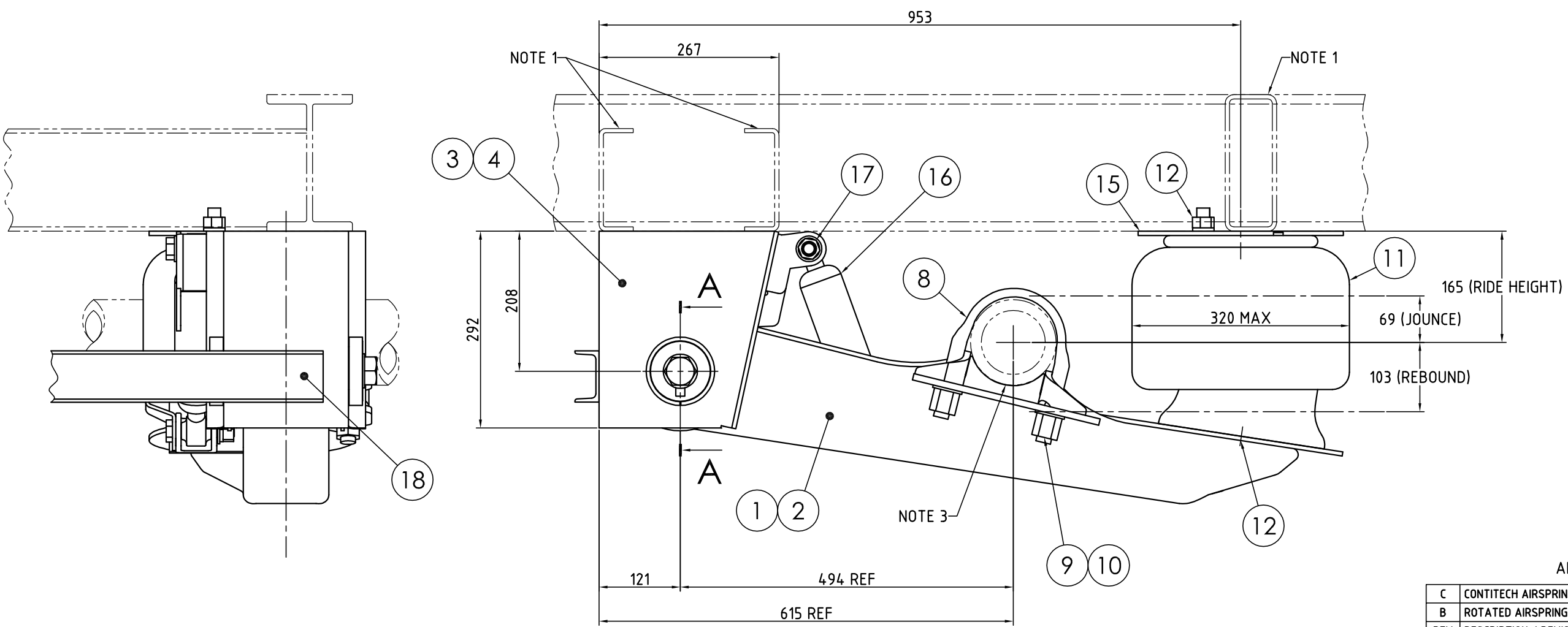




CERTIFICATION UNIT ID:
 SINGLE: SARN - 30236
 TANDEM: SARN - 30237
 TRIAXLE: SARN - 30238
 QUAD: SARN - 30239



ITEM	MATERIAL / DESCRIPTION	PART No.	QTY
1	ARM ASSEMBLY - L.H	930203-10	1
2	ARM ASSEMBLY - R.H	930203-20	1
3	HANGER ASSEMBLY - L.H	920245-1WE5	1
4	HANGER ASSEMBLY - R.H	920245-2WE5	1
5	PIVOT BUSHING - MULTIFUNCTION	17993	2
6	COLLAR - ECCENTRIC	17234	2
7	SPACER WASHER (NYLON) - HANGER	17183	4
8	U-BOLT - 7/8" - 14x8 5/8"	17477	4
9	NUT, U-BOLT - 7/8"-14	17364	8
10	WASHER, HARDENED - 7/8"	17010	8
11	AIRSPRING - CONTITECH (9 10-16 P 769)	AS-0113G	2
12	HARDWARE PACK - AIRSPRING	16067	1
13	BOLT - 1 1/8"-12 x 10 1/2"	17269	2
14	LOCKNUT	10023	2
15	PLATE, UPPER - AIRBAG	50371	2
16	SHOCK ABSORBER	17300	2
17	SHOCK KIT - VERTICAL	16002	1
18	CROSSMEMBER - 41"	12524	1
19	BRACKET - LEVEL VALVE ROD CONNECTION	30259	1



SECTION A-A
ADJUSTABLE ALIGNMENT COLLARS

- NOTES:
1. SHOWN FOR REFERENCE PURPOSES ONLY, PROPER FRAME DESIGN AT SUSPENSION ATTACHMENT AREA IS THE RESPONSIBILITY OF INSTALLER.
 2. CAPACITY 25,000 lbs (11,340 Kg).
 3. REFER TO "WATSON & CHALIN TA-250 & TA-300 INSTALLATION MANUAL" FOR SEAT TO AXLE WELDING INSTRUCTIONS.

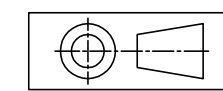
C	CONTITECH AIRSPRING WAS GOODYEAR. ADDED SHEET 2 OF 2.	S.H	15.08.07
B	ROTATED AIRSPRING 90° TO SUIT AXLE LIFT (WHERE APPLICABLE).	S.H	01.05.07
REV	DESCRIPTION / REVISION	INIT	DATE

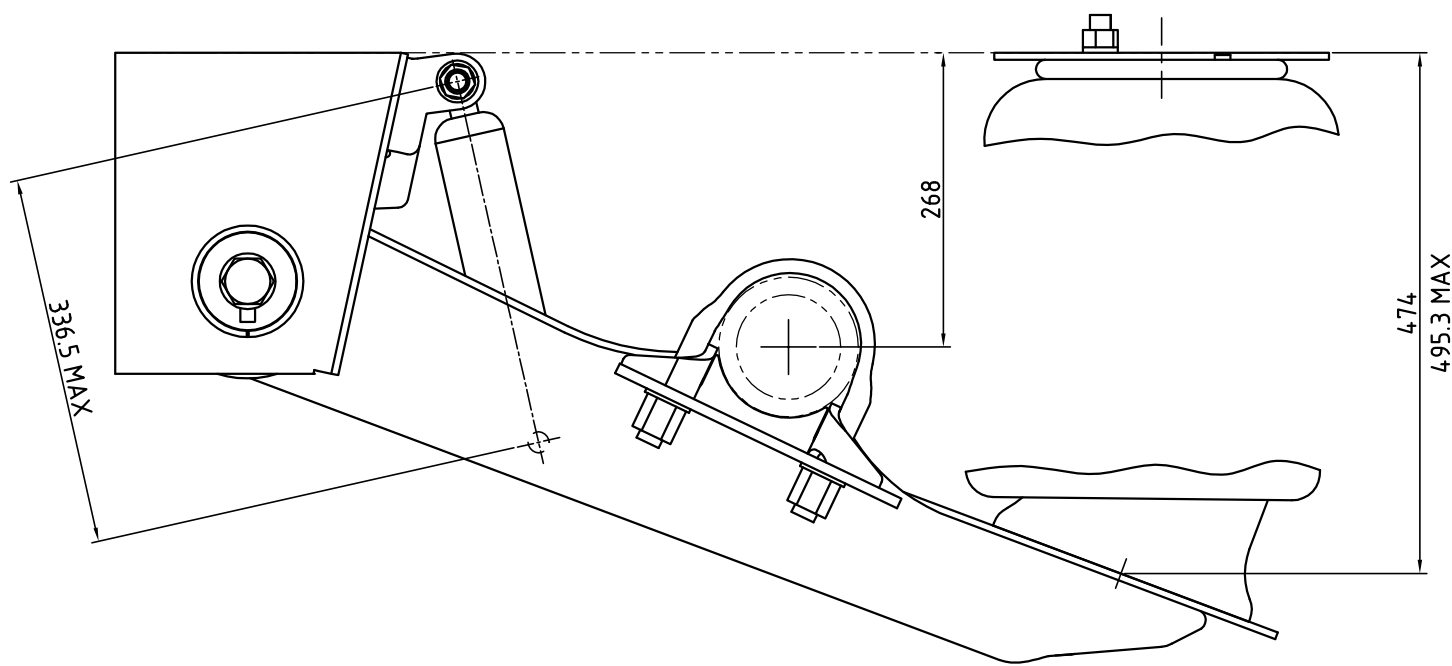
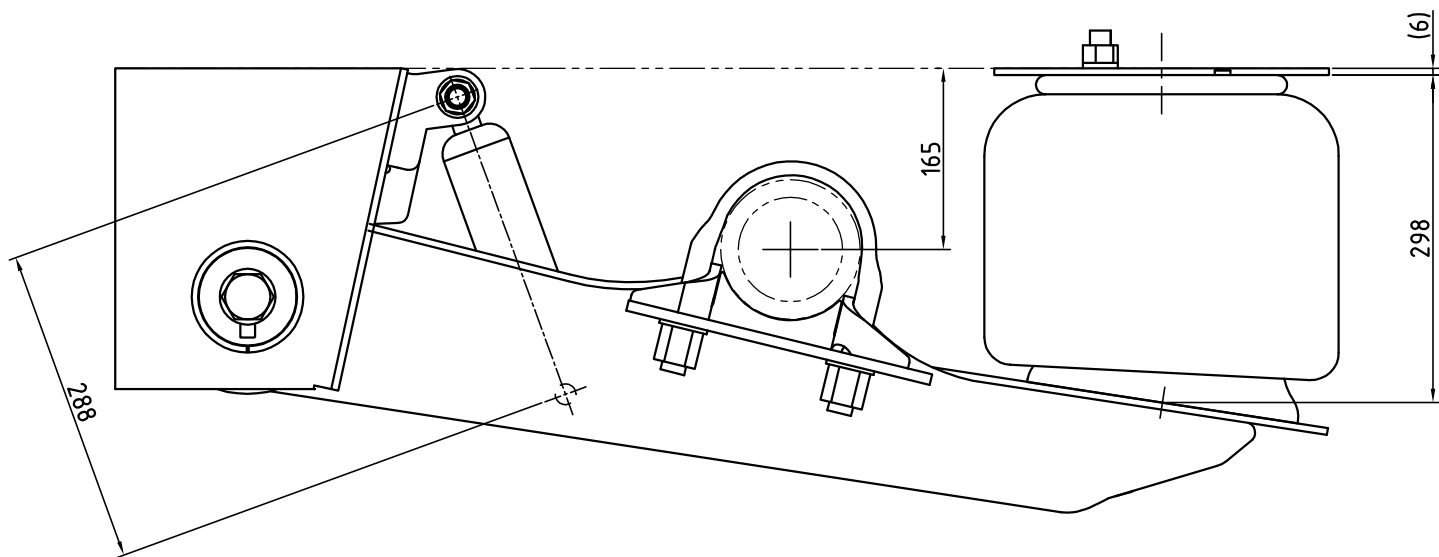
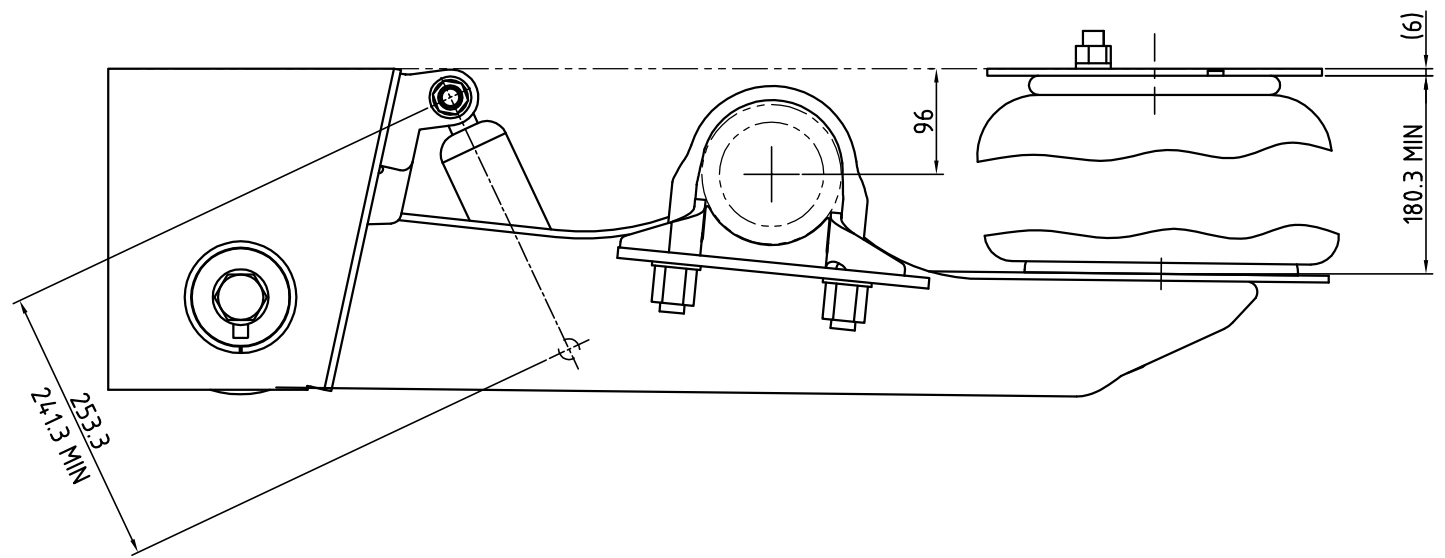
	FUWA K HITCH AUSTRALIA PTY. LTD.	
	AIR SUSPENSION - UNDERSLUNG WATSON & CHALIN TA-250U-165 (W & C Reference: 120433)	
DRAWN S.HUNT	DRAWING NUMBER	REV
DATE 16.04.2007	ASTA0003-01	C
CHECKED	SHEET No: 1 OF 1	A2
SCALE 1:5		

THIS DRAWING, AND ALL INFORMATION ON THIS DRAWING, IS THE PROPERTY OF FUWA K HITCH AUSTRALIA PTY. LTD. AND MAY NOT BE COPIED IN ANY WAY OR FORM WITHOUT THE WRITTEN CONSENT OF FUWA K HITCH AUSTRALIA PTY LTD.


DIMENSIONS IN MILLIMETRES

DO NOT SCALE





C	CONTITECH AIRSPRING WAS GOODYEAR. ADDED SHEET 2 OF 2.	S.H	15.08.07
B	ROTATED AIRSPRING 90° TO SUIT AXLE LIFT (WHERE APPLICABLE).	S.H	01.05.07
REV	DESCRIPTION / REVISION	INIT	DATE

	FUWA K HITCH AUSTRALIA PTY. LTD.	
	AIR SUSPENSION - UNDERSLUNG WATSON & CHALIN TA-250U-165 (W & C Reference: 120433)	
DRAWN S.HUNT DATE 16.04.2007 CHECKED SCALE 1:5	DRAWING NUMBER ASTA0003-01 SHEET No: 1 OF 1	REV C A2

THIS DRAWING, AND ALL INFORMATION ON THIS DRAWING, IS THE PROPERTY OF FUWA K HITCH AUSTRALIA PTY. LTD. AND MAY NOT BE COPIED IN ANY WAY OR FORM WITHOUT THE WRITTEN CONSENT OF FUWA K HITCH AUSTRALIA PTY LTD.

DIMENSIONS IN MILLIMETRES

DO NOT SCALE

