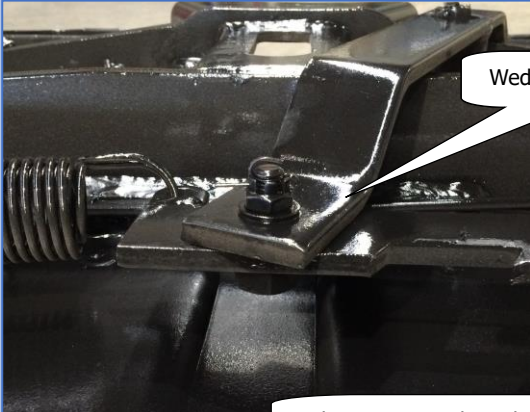
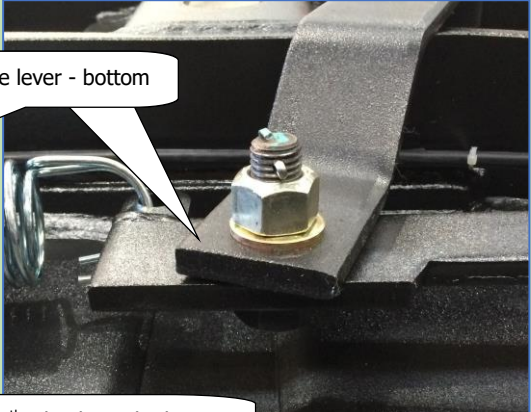
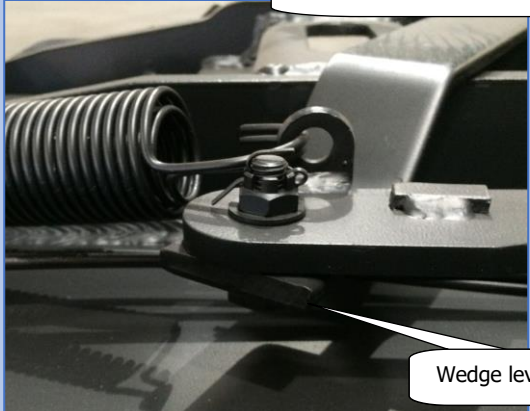





# INSTALLATION, MAINTENANCE & SERVICE BULLETIN

## KA..A & KA..C,D Lever connection

5 <sup>th</sup> wheel models	Made before 2018	Made after 2017
<b>Highway Master</b>  KA10A50 KA12A50	 <p>Wedge lever - bottom</p>	
<b>Fleet Master</b>  KA10C50 KA12C50 KA11C50 KA13C50 KA11D90 KA13D90		 <p>Wedge lever - top</p>
<b>Lever connection</b>	<p>Stepped bolt with M12 caselated nut.</p> 	<p>Std. bolt with M16 conelock nut.</p> 

The 4 pictures show the 5<sup>th</sup> wheel upside down!

# INSTALLATION, MAINTENANCE & SERVICE BULLETIN

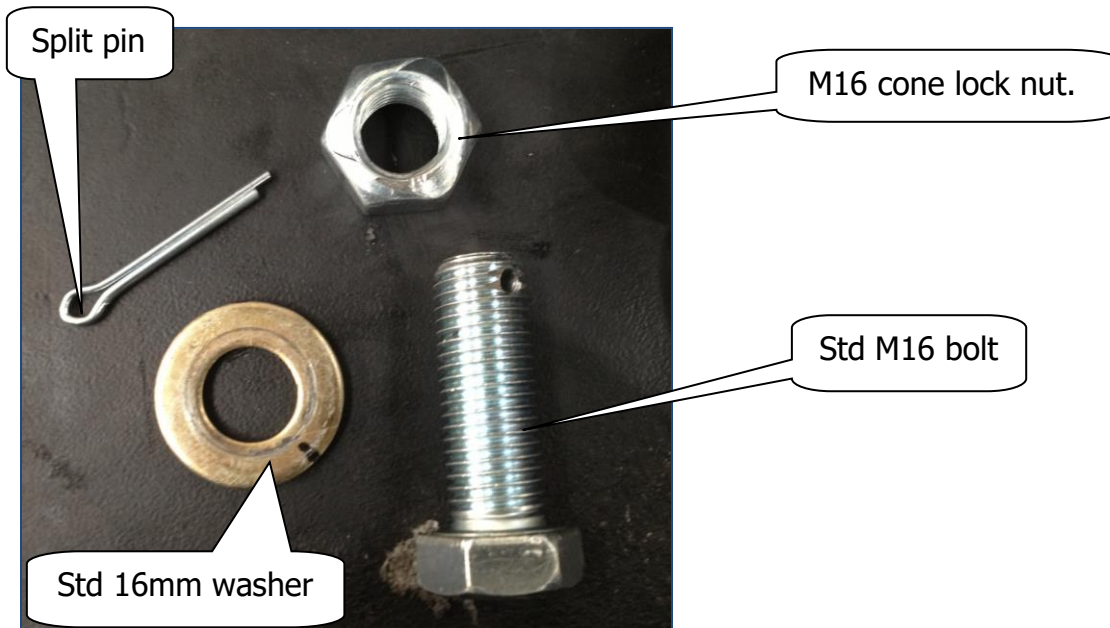
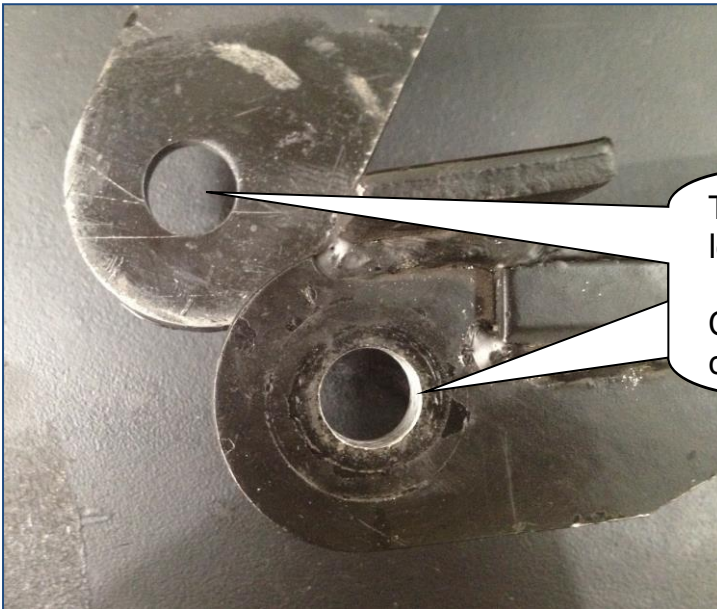
## INSTALLATION

It is recommended when rebuilding an earlier model KA 5<sup>th</sup> wheel, to replace the stepped bolt and upgrade it to the M16 bolt with the cone lock and the split pin.

If the bottom lever is not replaced with a new model lever (Ø16mm hole), it will be necessary to drill the Ø12.5mm hole in bottom lever out to a Ø16mm hole to accommodate the Std. M16 bolt.

On the Highway Master the wedge lever is on the bottom (see page one), therefore it has a Ø12.5mm hole for the stepped bolt.

On the Fleet Master the wedge lever is on the top (Ø16mm hole) and therefore handle lever has the Ø12.5mm hole.



## INSTALLATION, MAINTENANCE & SERVICE BULLETIN

Tighten the M16 cone lock nut to the bolt. ~50kN



Undo the M16 cone lock nut by 1/8 of a turn.  
Check that the levers are moving feely with minimal clearance.



Install the split pin.

**Note:** For any other service information on the KA 5<sup>th</sup> wheels go to: KPM-007-0310.  
For parts information go to: KPS-00-1012, KPS-005-1012