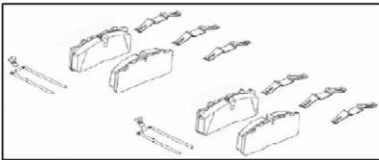
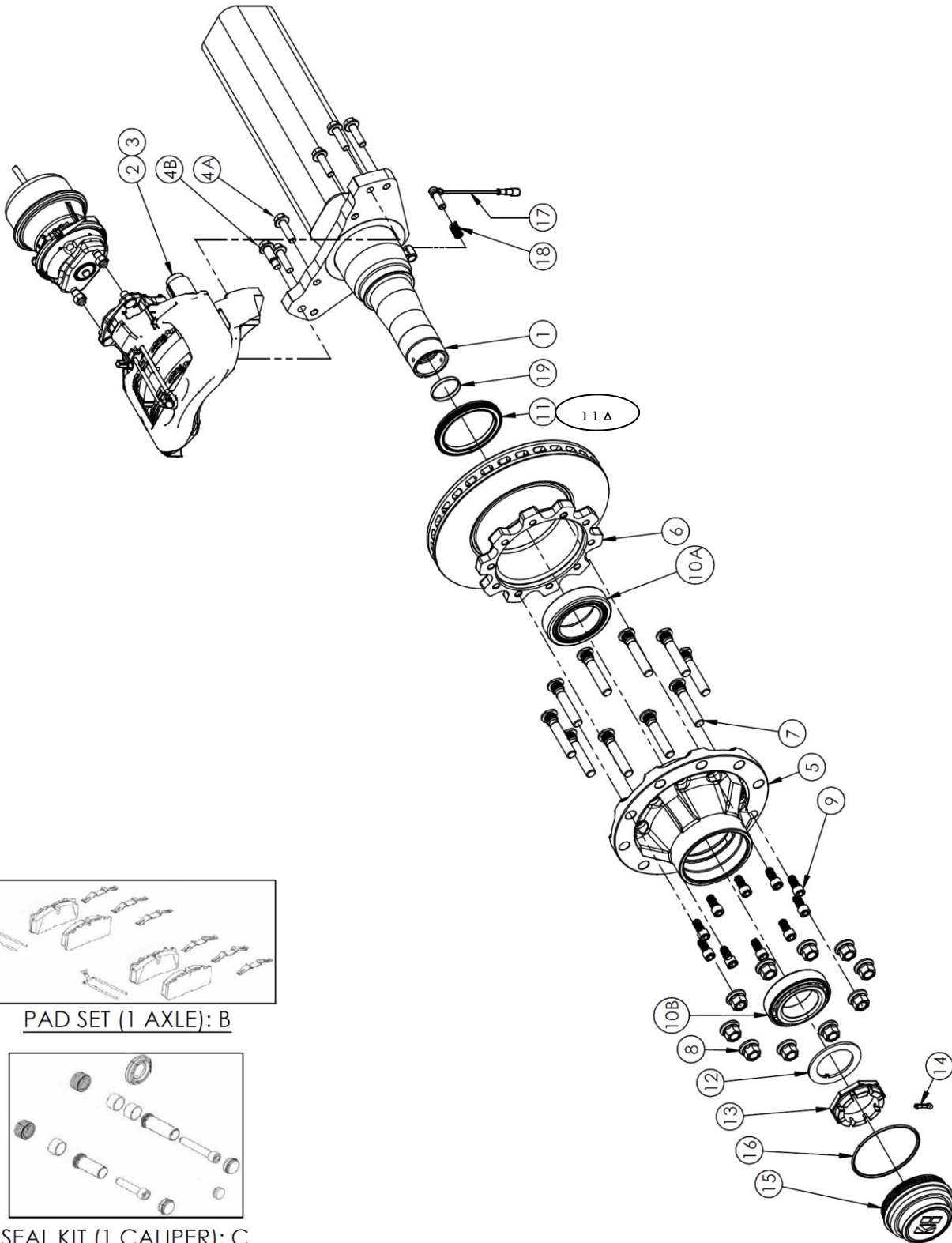
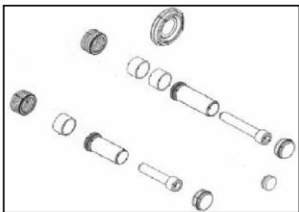


PARTS VIEW

FB24 HD DISC BRAKE AXLE (PAN22)



PAD SET (1 AXLE): B



SEAL KIT (1 CALIPER): C

IMAGES FOR ILLUSTRATION PURPOSES ONLY

PARTS VIEW

| Ref No. | PART No. | DESCRIPTION | APPLICATION | |
|------------|-----------------------|------------------------------|---------------------|--------|
| | | BEAM OPTIONS | | |
| | | | QTY. PER AXLE | 1850 |
| | | | | TN |
| 1 | TBA | BEAM – 150sqx16 | 1 | X |
| | | CALIPER | | |
| | | | QTY. PER AXLE | PAN 22 |
| | | | | |
| 2 | 6402251200 | CALIPER – LH – WABCO PAN 22 | 1 | X |
| 3 | 6402251210 | CALIPER – RH – WABCO PAN 22 | 1 | X |
| 4A | B30-0103 | FLANGED BOLT – M16 | 10 | X |
| 4B | B30-0202 | FLANGED SHOULDER BOLT – M16 | 2 | X |
| B | 12999796 | PAD SET | 1 | X |
| C | 6402259212 | CALIPER SEAL KIT | 2 | X |
| | | HUB OPTIONS | | |
| | | | QTY. PER AXLE | 10x335 |
| | | | | |
| 5 | H31-6101DB | HUB – 10x335 | 2 | X |
| 6 | H32-D002 | BRAKE ROTOR – Ø430 – PAN 22 | 2 | X |
| | | WHEEL END COMPONENTS | | |
| | | | QTY. PER AXLE | TN |
| | | | | |
| 7 | KH800104 (H33-0301) | STUD SHORT (M22x94) | 20 | X |
| 7 | KH800239 (H33-0302) | STUD LONG (M22x122) | 20 | X |
| 7 | H33-2602 (AS OF 2021) | STUD LONG (M24x122) | 20 | X |
| 8 | KH800096 (H34-0301) | NUT M22 x 32 A/F | 20 | X |
| 8 | KH800238 (H34-0302) | NUT M22 x 33 A/F | 20 | O |
| 8 | H34-0401 (AS OF 2021) | NUT M24 x 34 A/F | 20 | X |
| 8 | H34-0901 | NUT M22 x 32 A/F – 50mm long | 20 | O |
| 9 | KHDB014 | BOLT – HUB/ROTOR – M16 | 20 | X |
| 10A | H12-0200 | BEARING INNER | 2 | X |
| 10B | H12-0100 | BEARING OUTER | 2 | X |
| 11 | H11-0300 | SEAL (KH800120) | 2 | X |
| 11A | N300200-004 (NS) | SEAL SHIELD | 2 | X |
| 12 | A11-0101 | WASHER – BEARING | 2 | X |
| 13 | A12-0101 | SPINDLE NUT | 2 | X |
| 14 | A13-0101 | COTTER PIN | 2 | X |
| 15 | KH800205B | HUB CAP – SCREW ON | 2 | X |
| 16 | H15-0201 | O-RING – HUB CAP | 2 | X |
| 17 | A15-0101 | ABS SENSOR LEAD (400mm) | 2 | X |
| 18 | A16-0101 | SLEEVE | 2 | X |
| 19 | B16-0201 | EXPANSION PLUG | 2 | X |

Note: TN – Taper spindle (small and big bearing)

X: Standard | NSS: Not Sold Separately | O: Optional | NS: Not shown

Hub Cap: May vary (Oil hubs, Customer specs & Hub-odometer may require different hub caps)

1. Studs may be short or long, check before you order.

2. Long Nut # H34-0901 (32mm A/F) can be used on long studs with steel wheels.

For Product Support call: (03) 9369 0000 | (07) 3372 2223 | (08) 9350 6470

www.khitch.com.au Uncontrolled document when printed. **Bulletin No: KPS-002-0513 Rev9**