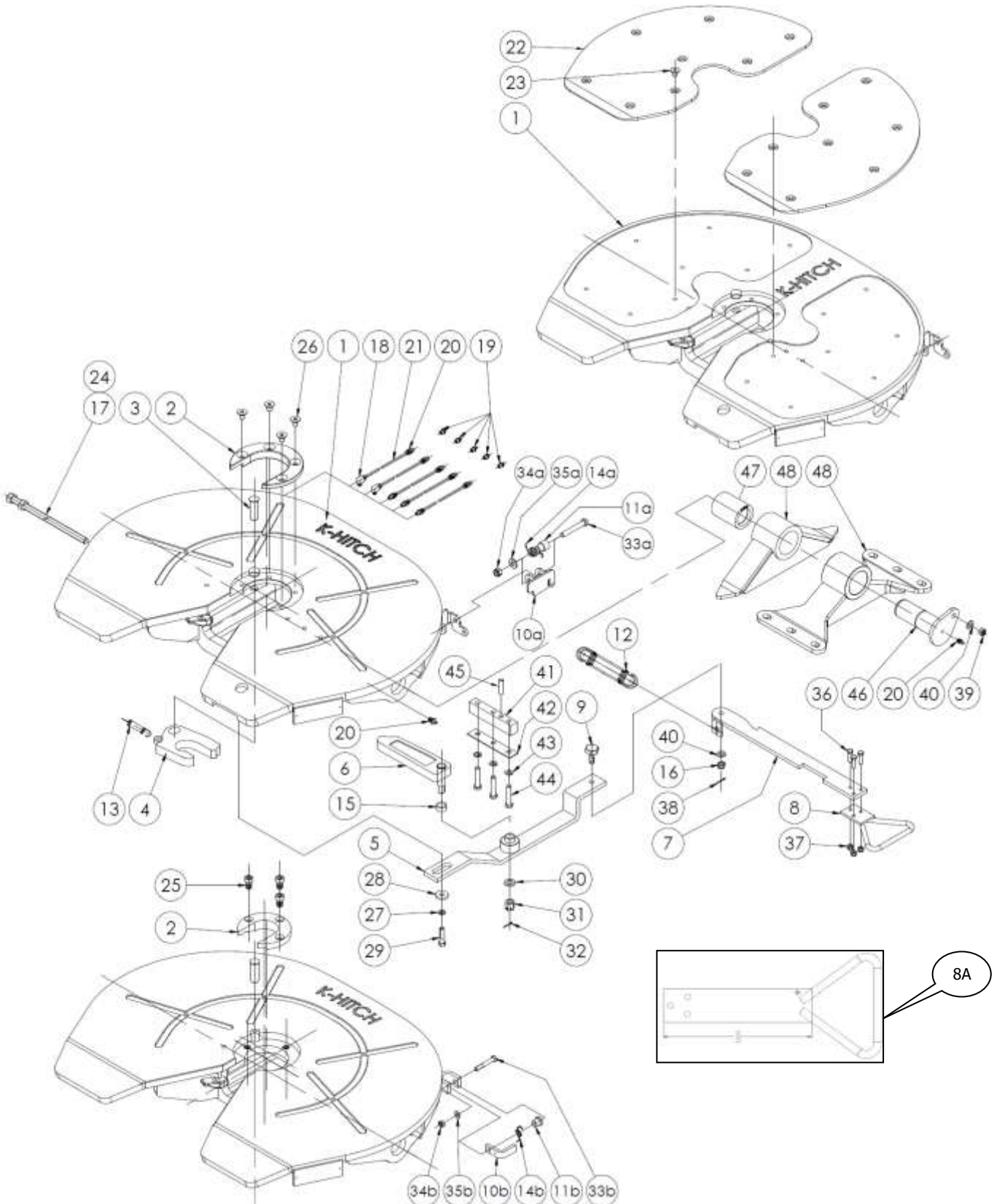


# PARTS VIEW

## FLEET MASTER KA10, 11, 12, 13C&D



**IMAGES FOR ILLUSTRATION PURPOSES ONLY**

# PARTS VIEW

Ref No.	PART No.	DESCRIPTION	APPLICATION							
			QTY PER TURN/TABLE	KA						
				10C50 50mm Standard	12C50 50mm Greaseless	11C50 50mm Standard Extra Wide	13C50 50mm Greaseless Extra Wide	11D90 90mm Standard Extra Wide	13D90 90mm Greaseless Extra Wide	
1	NSS	TOP PLATE WELDMENT	1	X						
1	NSS	TOP PLATE WELDMENT	1		X					
1	NSS	TOP PLATE WELDMENT	1			X				
1	NSS	TOP PLATE WELDMENT	1				X			
1	NSS	TOP PLATE WELDMENT	1					X		
1	NSS	TOP PLATE WELDMENT	1						X	
2	KH780016	COLLAR, WEAR – 50mm JAW	1	X	X	X	X			
2	KH799101	COLLAR, WEAR – 90mm JAW	1					X	X	
3	KH780006	PIN – JAW PIVOT	1	X	X	X	X			
3	KH796002	PIN – JAW PIVOT	1					X	X	
4	KH780017	JAW – 50mm ADJ	1	X	X	X	X			
4	KH796001	JAW – 90mm ADJ	1					X	X	
5 <sup>^</sup>	KH787000K	LEVER – WEDGE Control	1	X	X	X	X			
5 <sup>^</sup>	KHA069K	LEVER – WEDGE Control	1					X	X	
6	KH780018MK3	WEDGE ASSEMBLY	1	X	X	X	X			
6	KH795002	WEDGE ASSEMBLY	1					X	X	
7 <sup>^</sup>	KH78Z3010K	LEVER	1	X	X					
7 <sup>^</sup>	KH78ZK3010K	LEVER	1			X	X			
7 <sup>^</sup>	KH792200K	LEVER	1					X	X	
8	KH785100	HANDLE ASSEMBLY –SHORT	1	X	X	X	X	X	X	
8A	KHA107C	HANDLE ASSEMBLY –LONG	AVAILABLE ON REQUEST							
9	KH780011-1	BOLT	1	X	X	X	X	X	X	
10a	NSS <sup>#</sup>	LEVER LOCK – HANDLE	1					X	X	
10b	NSS <sup>^</sup>	LEVER LOCK – HANDLE	1	X	X	X	X			
11a	NSS <sup>#</sup>	BUSH – HANDLE LOCK	1					X	X	
11b	NSS <sup>^</sup>	BUSH – HANDLE LOCK	1	X	X	X	X			
12	KH784000	SPRING SET –HANDLE Return	1	X	X	X	X			
12	KH799200	SPRING SET –HANDLE Return	1					X	X	
13	KH780005	SPRING – JAW RETURN	1	X	X	X	X	X	X	
14a	NSS <sup>#</sup>	SPRING – HANDLE LOCK	1					X	X	
14b	NSS <sup>^</sup>	SPRING – HANDLE LOCK	1	X	X	X	X			
15	KH780023	SPACER BOSS	1	X	X	X	X			
16	KH780014-1	CONE LOCK NUT	1	X	X	X	X	X	X	
17	N500073-001	ADJUST. SCREW & NUT	1	X	X	X	X	X	X	
18	KH022	GREASE FITTING –MALE –90°	2	X		X		X		
19	NSS	1/8 BSP GREASE NIPPLE	9	X		X		X		
19	NSS	1/8 BSP GREASE NIPPLE	5		X		X		X	
20	NSS	CONNECTOR MALE	8	X		X		X		
20	NSS	CONNECTOR MALE	2		X		X		X	
21	NSS	NYLON TUBE	A/R	X	X	X	X	X	X	
22	GI001 <sup>∞</sup>	GREASELESS INSERT SET	1		X		X		X	
23	GRB002 <sup>∞</sup>	BOLT GL INSERT SET	1		X		X		X	
24	NSS	NUT	1	X	X	X	X			
25	KH780015	S/HEAD CAP SCREW M14	3	X	X	X	X			
26	KH799102	C/S S/ HEAD SCREW M12	4					X	X	

<sup>∞</sup>PARTS CONTAINED IN KIT #GIKIT | <sup>#</sup>PARTS CONTAINED IN KIT 'TBC' | <sup>^</sup>PARTS CONTAINED IN KIT #KH788000

For Product Support call: (03) 9369 0000 | (07) 3372 2223 | (08) 9350 6470

[www.khitch.com.au](http://www.khitch.com.au) Uncontrolled document when printed! Bulletin No: KPS-005-1012 Rev9 2

# PARTS VIEW

Ref No.	PART No.	DESCRIPTION	APPLICATION						
			QTY PER TURNTABLE	KA					
				10C50	12C50	11C50	13C50	11D90	13D90
	50mm Standard	50mm Greaseless	50mm Standard Extra Wide	50mm Greaseless Extra Wide	90mm Standard Extra Wide	90mm Greaseless Extra Wide			
27	KH780026	SPRING WASHER – M12	1	X	X	X	X	X	X
28	KH780025	FLAT WASHER – M12 - XL	1	X	X	X	X	X	X
29	KHA051	HEX HEAD BOLT – M12 x 25	1	X	X	X	X	X	X
30	KH780021	FLAT WASHER – M16	1	X	X	X	X	X	X
31	KH780020	CASTELLATED NUT – M16	1	X	X	X	X	X	X
32	KH780022	COTTER (SPLIT) PIN – 4mm	1	X	X	X	X	X	X
33a	NSS <sup>#</sup>	HEX HEAD BOLT – M12 x 80	1					X	X
33b	NSS <sup>^</sup>	HEX HEAD BOLT – M10 x 65	1	X	X	X	X		
34a	NSS <sup>#</sup>	NYLOC NUT – M12	1					X	X
34b	NSS <sup>^</sup>	NYLOC NUT – M10	1	X	X	X	X		
35a	NSS <sup>#</sup>	FLAT WASHER – M12	1					X	X
35b	NSS <sup>^</sup>	FLAT WASHER – M10	1	X	X	X	X		
36	KHA109	HEX HEAD BOLT – M8x30	3	X	X	X	X	X	X
37	KHA110	NYLOC NUT – M8	3	X	X	X	X	X	X
38	KH780013	SPLIT PIN	1	X	X	X	X	X	X
39	KH780010	NYLOC NUT – M12	2	X	X	X	X	X	X
40	KH750021	FLAT WASHER	3	X	X	X	X	X	X
41	KH793004	BLOCK – WEDGE GUIDE	1					X	X
42	KH793003	STRAP – WEDGE GUIDE	1					X	X
43	KH780026	SPRING WASHER – M12	3					X	X
44	KH793001	HEX HEAD BOLT – M12 x 60	3					X	X
45	KH793002	DOWEL PIN – Ø12	1					X	X
46	KH007	PIN	2	X	X	X	X	X	X
47	KH005HD	BUSH	2	X	X	X	X	X	X
48	KH062	FOOT 128mm – 55mm pivot	2	X	X	X	X	X	X
48	KH063	FOOT 148mm – 75mm pivot	2	X	X	X	X	X	X
48	KH071	FOOT 166mm – 93mm pivot	2	X	X	X	X	X	X
48	KH069	FOOT 196mm – 123mm pivot	2	X	X	X	X	X	X
48	KH070	FOOT 218mm – 145mm pivot	2	X	X	X	X	X	X
48	KH782000-1	FOOT 150mm – 73mm pivot	2	X	X	X	X	X	X
48	KH782000-2	FOOT 172mm – 95mm pivot	2	X	X	X	X	X	X
48	KH782000-3	FOOT 185mm – 108mm pivot	2	X	X	X	X	X	X
C	N500072-001	BOLT KIT	1	X	X	X	X	X	X

<sup>°</sup>PARTS CONTAINED IN KIT #GIKIT | <sup>#</sup>PARTS CONTAINED IN KIT 'TBC' | <sup>^</sup>PARTS CONTAINED IN KIT #KH788000

Note: X: Standard

NS: Not Shown

NSS: Not Sold Separately

C: That is a lever connection bolt kit (Items: 9, 16, 38, 40)

^: When ordering a lever, the bolt kit N500072-001 is also supplied.