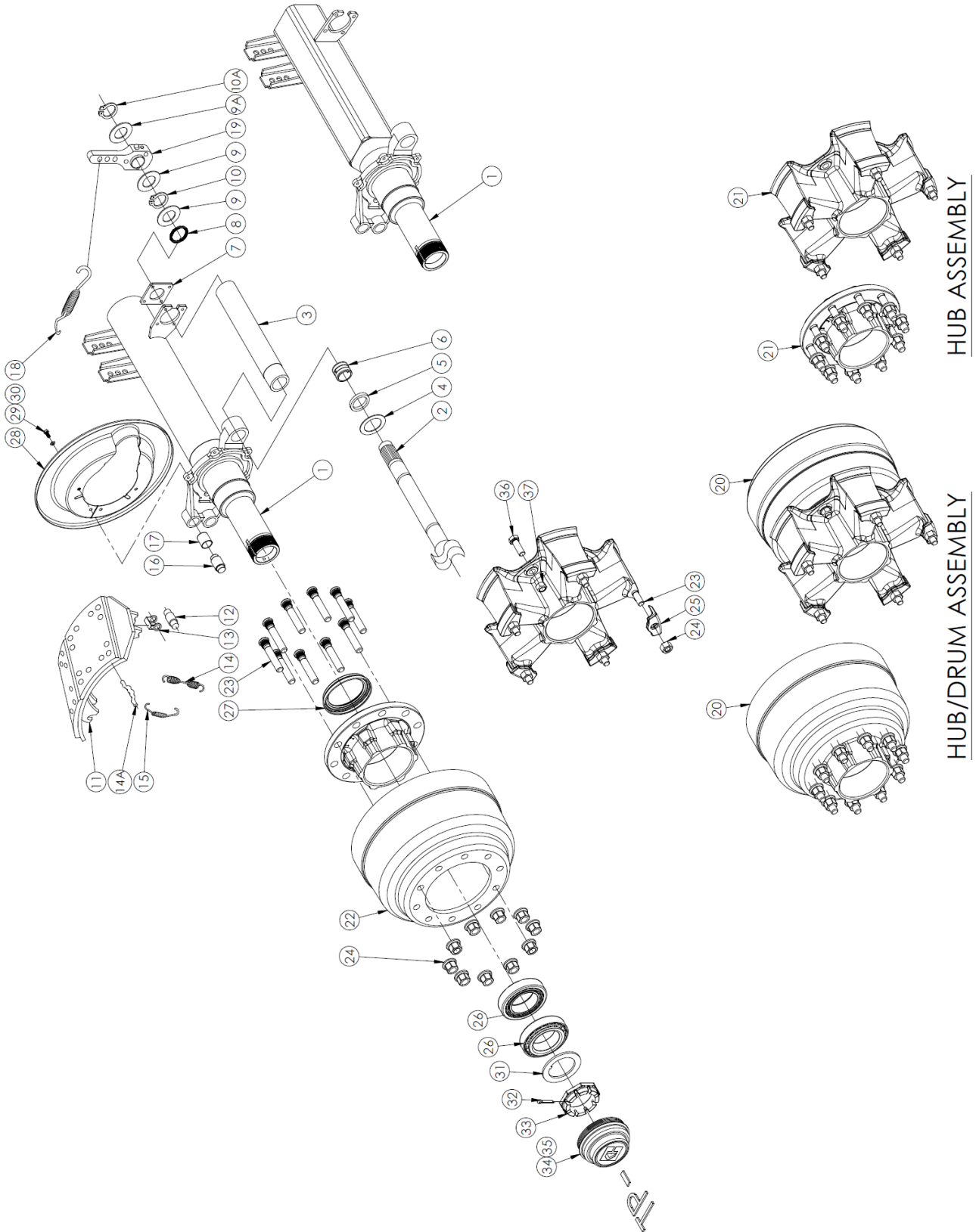


PARTS VIEW

KF21 HD DRUM BRAKE AXLE (22.5")



IMAGES FOR ILLUSTRATION PURPOSES ONLY

PARTS VIEW

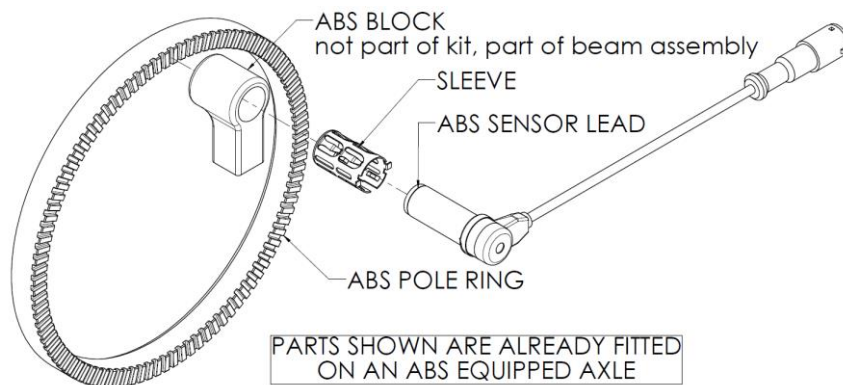
Ref No.	PART No.	DESCRIPTION	APPLICATON		
			QUANTITY PER AXLE	1850	TP
BEAM OPTIONS					
				Ø127x19	□127x12
1	KF21BX12X1850P30	BEAM & CAM ASSY	1	X	
1	KF21BX12X1850U30	BEAM & CAM ASSY	1		X
1	KF21BX13X1850P30	BEAM & BRAKE ASSY	1	X	
1	KF21BX13X1850U30	BEAM & BRAKE ASSY	1		X
BRAKE COMPONENTS					
2	C11-0101C-613LH	CAMSHAFT-LH (613mm) 1-5/8" 37sp	1	X	X
2	C11-0101C-613RH	CAMSHAFT-RH (613mm) 1-5/8" 37sp	1	X	X
3	C30-0102-613 [°]	CAMTUBE	2	X	X
3	C30-0101-613 [°]	CAMTUBE (Old Style)	2		
4	C12-0101 [°]	WASHER, Camshaft Spacer	2	X	X
5	C14-0301 [°]	SEAL, CAMSHAFT OUTER	2	X	X
5	KH800161	SEAL, CAMSHAFT OUTER – (Old Style)	2		
6	C13-0301 [°]	CAMSHAFT BUSH (SPIDER)	2	X	X
6	C13-0101	CAMSHAFT BUSH (SPIDER) – (Old Style)	2		
7	C33-0101 [°]	CAMSHAFT, MTG PLATE	2	X	X
8	C24-0101 [°]	O-RING, CAMTUBE INNER	2	X	X
9	C15-0101 [°]	WASHER, CAMSHAFT SPACER	4	X	X
9A	C15-0102 [°]	WASHER, SLACK ADJUSTER	2	X	X
10	C16-0401 [°]	CIRCLIP, CAMSHAFT INNER	2	X	X
10A	C16-0101 [°]	CIRCLIP, SLACK ADJUSTER	2	X	X
11	D20-010101*	SHOE SET (2)	2	X	X
12	NSS*	ROLLER	4	X	X
13	NSS*	ROLLER RETAINER	4	X	X
14	NSS*	RETURN SPRING	2	X	X
14A	NSS*	RETAINING PIN	4	X	X
15	NSS*	ANCHOR SPRING	2	X	X
16	NSS*	ANCHOR PIN	4	X	X
17	NSS*	ANCHOR PIN BUSH	4	X	X
18	A20-0101	RETURN SPRING, SLACK ADJUSTER	2	X	X
19	61137370EF	POSITIVE LOCK SLACK ADJUSTER	2	X	X
19	ASC23112	AUTO SLACK ADJUSTER (5"6"/7" hole positions)	2	O	O
[°] PARTS CONTAINED IN KIT A *PARTS CONTAINED IN KIT B – REFER TO PAGE 4					

PARTS VIEW

Ref No.	PART No.	DESCRIPTION	APPLICATON			
			QUANTITY PER AXLE	10x285 22.5"	10x335 22.5"	5 SPOKE 22.5"
HUB/DRUM COMPONENTS						
				Ø420x180 (Ø16.5"x7") XEM	Ø420x180 (Ø16.5"x7") XEM	Ø420x180 (Ø16.5"x7") XEM
				TP	TP	TP
				KF21BG15	KF21BG16	KF21BG14
20	KH3600-0303	HUB/DRUM ASSY-Short stud	2	X		
20	KH3600-0303Z	HUB/DRUM ASSY-Long stud	2	X		
20	KH3600-0103	HUB/DRUM ASSY-Short stud	2		X	
20	KH3600-0103Z	HUB/DRUM ASSY-Long stud	2		X	
20	KH3600/FF	HUB/DRUM ASSY	2			X
21	KH3601-0302	HUB ASSY – Short stud	2	X		
21	KH3601-0302Z	HUB ASSY – Long stud	2	X		
21	KH3601-0101	HUB ASSY – Short stud	2		X	
21	KH3601-0101Z	HUB ASSY – Long stud	2		X	
21	KH3601/FF	HUB ASSY	2			X
22	KH3602-0303	DRUM	2	X		
22	KH3602-0101	DRUM	2		X	
22	KH3602/FF	DRUM	2			X
WHEEL END COMPONENTS						
23	KH800106 (H37-0101)	STUD ¾" NC	10			X
23	KH800104 (H33-0301)	STUD SHORT (M22x94)	20	X	X	
23	KH800239 (H33-0302)	STUD LONG (M22x122)	20	X	X	
24	KH800098 (H38-0101)	NUT ¾" NC	10			X
24	KH800096 (H34-0301)	NUT M22 x 32 A/F	20	X	X	
24	KH800238 (H34-0302)	NUT M22 x 33 A/F	20	O	O	
24	H34-0901	NUT M22 x 32 A/F – 50mm long	20	O	O	
25	KH800146 (H39-0101)	RIM CLAMP	10			X
26	H12-0100	BEARING INNER	2	X	X	X
26	H12-0100	BEARING OUTER	2	X	X	X
27	373-0223 (801)	SEAL (off-road)	2	X	X	X
28	H18-0101	DUST COVER	2	X	X	X
29	KH800055	SPRING WASHER	12	X	X	X
30	M8X16X1.75	BOLT – DUST COVER – M8	12	X	X	X
31	A11-0101	WASHER BEARING	2	X	X	X
32	A13-0101	COTTER PIN	2	X	X	X
33	A12-0101	NUT SPINDLE	2	X	X	X
34	H15-0201	O-RING – HUB CAP	2	X	X	X
35	KH800205B	HUB CAP – SCREW ON – BLACK	2	X	X	X
36	NSS	BOLT – ¾" UNF x 2-¼" – GR8	10			X
37	NSS	CONELock NUT – ¾" UNF – GR8	10			X

PARTS VIEW

Ref #	KIT Part No.	Component Part No.	DESCRIPTION	QTY/ AXLE	QTY/ KIT	APPLICATION
A	C30-0102-613K		CAM TUBE KIT (suit 1 cam)	2		KIT SUITS: TP 1850mm TRACK AXLE
		C30-0102-613	CAMTUBE ASSY		1	
		C12-0101	WASHER, CAMSHAFT SPACER		1	
		C14-0301	SEAL, CAMSHAFT OUTER		1	
		C13-0301	CAMSHAFT BUSH (SPIDER)		1	
		C33-0101	CAMSHAFT, MTG PLATE		1	
		C24-0101	O-RING, CAMTUBE INNER		1	
		C15-0101	WASHER, CAMSHAFT SPACER		2	
		C15-0102	WASHER, SLACK ADJUSTER		1	
		C16-0401	CIRCLIP, CAMSHAFT INNER		1	
		C16-0101	CIRCLIP, SLACK ADJUSTER		1	
	C30-0101-613K	(Old Style)	CAM TUBE KIT (suit 1 cam)	2		
B	D20-010101K		BRAKE SHOE KIT (1 wheel)	2		KIT SUITS: KF21 AXLE
		D20-010101	SHOE SET (1 wheel)		1	
		NSS	ROLLER		2	
			ROLLER RETAINER		2	
			RETURN SPRING		1	
			RETAINING PIN		2	
			ANCHOR SPRING		1	
			ANCHOR PIN		2	
ANCHOR PIN BUSH		2				
C	ABSKIT-01		ABS KIT	1		KIT SUITS: TP AXLE
		A15-0202	ABS SENSOR LEAD (straight)		2	
		A16-0101	SLEEVE		2	
		H41-0201	ABS POLE RING – 100 Tooth ID Ø165mm ***		2	



***: The ID of 165mm is for axles manufactured from 2009, prior to that the ID may be different.

- Note: TP – parallel spindle (two bearings the same)
 X: Standard | NSS: Not Sold Separately | O: Optional
 Hub Cap: May vary (Oil hubs, Customer specs & Hub-odometer may require different hub caps)
1. Studs may be short or long, check before you order.
 2. Long Nut # H34-0901 (32mm A/F) can be used on long studs with steel wheels.