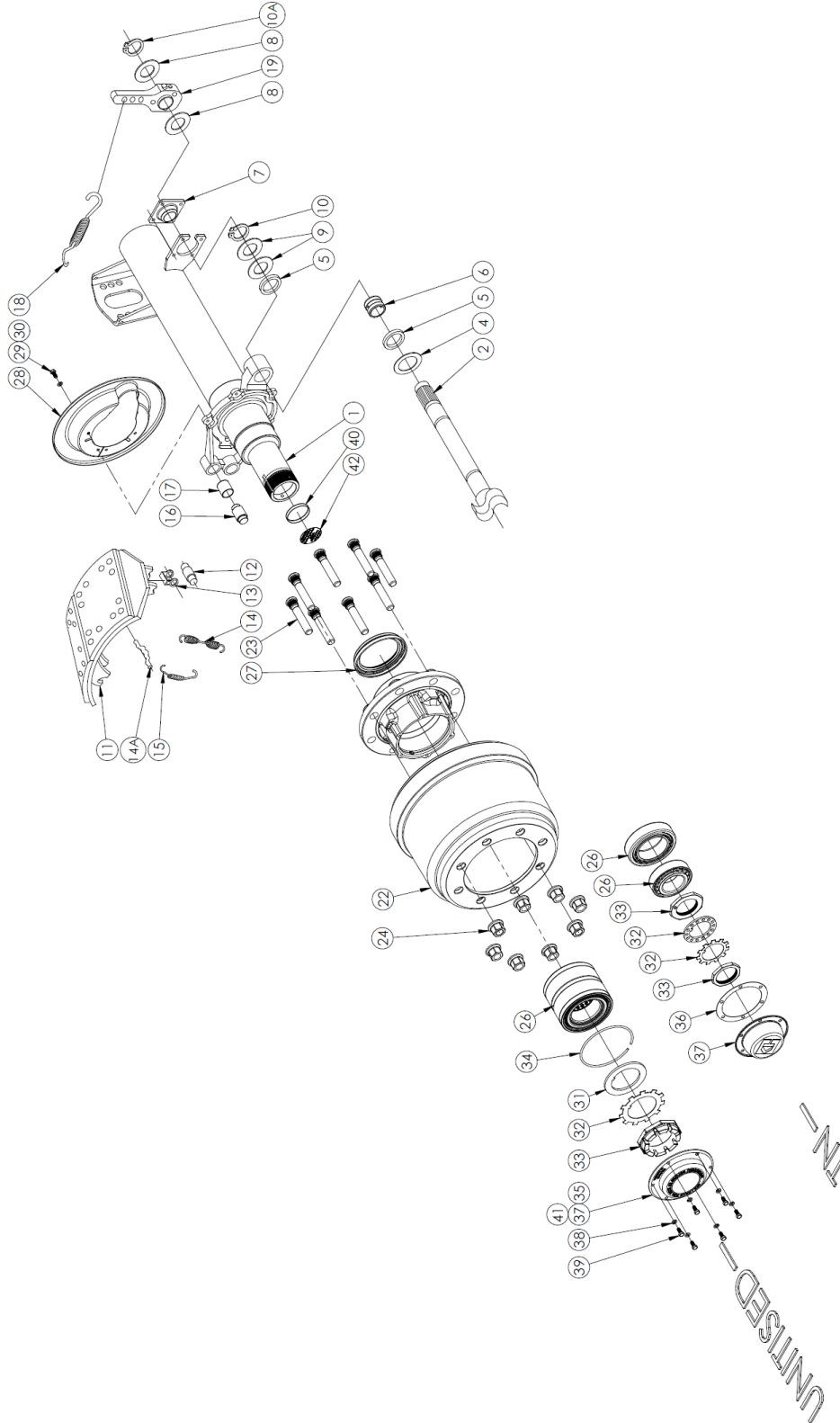


PARTS VIEW

KF37 DRUM BRAKE AXLE (19.5")



IMAGES FOR ILLUSTRATION PURPOSES ONLY

PARTS VIEW

Ref No.	PART No.	DESCRIPTION	APPLICATION				
			BEAM OPTIONS				
			QUANTITY PER AXLE	1850		1820	
TN	UNITISED	TN		UNITISED			
1	KF37AX12X1850N30	BEAM & CAM ASSY	1	X			
1	KF37FX12X1850N30	BEAM & CAM ASSY	1		X		
1	KF37AX12X1820N30	BEAM & CAM ASSY	1			X	
1	KF37FX12X1820N30	BEAM & CAM ASSY	1				X
1	KF37AX13X1850N30	BEAM & BRAKE ASSY	1	X			
1	KF37FX13X1850N30	BEAM & BRAKE ASSY	1		X		
1	KF37AX13X1820N30	BEAM & BRAKE ASSY	1			X	
1	KF37FX13X1820N30	BEAM & BRAKE ASSY	1				X
BRAKE COMPONENTS							
2	C11-0602-618LH	CAMSHAFT-LH(618mm) 1-1/2" 10sp	1	X		X	
2	C11-0602-618RH	CAMSHAFT-RH(618mm) 1-1/2" 10sp	1	X		X	
2		CAMSHAFT-LH(618mm) 1-1/2" 10sp	1		X		X
2		CAMSHAFT-RH(618mm) 1-1/2" 10sp	1		X		X
3	-	-	-				
4	C12-0102°	WASHER, CAMSHAFT Spacer	2	X	X	X	X
5	C14-0301°	SEAL, CAMSHAFT	4	X	X	X	X
6	C13-0301°	CAMSHAFT BUSH (SPIDER)	2	X	X	X	X
7	C20-0201°	BEARING ASSEMBLY-CAMSHAFT	2	X	X	X	X
8	C15-0102°	WASHER, CAMSHAFT SPACER	4	X	X	X	X
9	C15-0101°	WASHER, CAMSHAFT SPACER	4	X	X	X	X
10	C16-0201°	CIRCLIP, CAMSHAFT INNER	2	X	X	X	X
10A	C16-0501°	CIRCLIP, CAMSHAFT	2	X	X	X	X
11	D20-070101	SHOE SET (2)	2	X	X	X	X
12	NSS*	ROLLER	4	X	X	X	X
13	NSS*	ROLLER RETAINER	4	X	X	X	X
14	NSS*	RETURN SPRING	2	X	X	X	X
14A	NSS*	RETAINING PIN	4	X	X	X	X
15	NSS*	ANCHOR SPRING	2	X	X	X	X
16	NSS*	ANCHOR PIN	4	X	X	X	X
17	NSS*	ANCHOR PIN BUSH	4	X	X	X	X
18	A20-0101	RETURN SPRING, SLACK ADJUSTER	2	X	X	X	X
19	278323EF	POSITIVE LOCK SLACK ADJ	2	X	X	X	X
19	ASC21112	AUTO SLACK ADJUSTER	2	O	O	O	O
°PARTS CONTAINED IN KIT A - *PARTS CONTAINED IN KIT B - REFER TO PAGE 4							

*****Unitised 19.5" axles are not a stock product line.*****
Please speak to your K-Hitch representative for further information

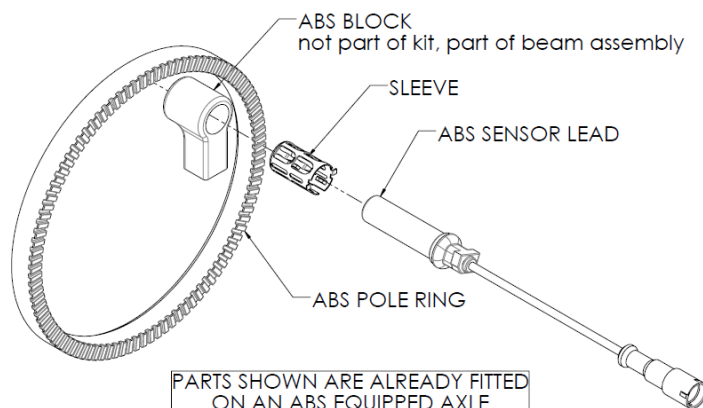
PARTS VIEW

		HUB/DRUM OPTIONS			
			QUANTITY PER AXLE	8x275 19.5"	
				Ø380x220 (15"x8-5/8") Standard	
				TN	UNITISED
				KF37AG19	KF37UG19
20	H30-9901	HUB/DRUM ASSY – Short stud	2	X	
20	H30-9901Z	HUB/DRUM ASSY – Long stud	2	X	
20	WHDT777FD	HUB/DRUM ASSY – Short stud	2		X
20	WHDT777AD	HUB/DRUM ASSY – Long stud	2		X
21	H31-9901	HUB ASSY – Short stud	2	X	
21	H31-9901Z	HUB ASSY – Long stud	2	X	
21	NSS	HUB ASSY – Short stud	2		X
21	-	HUB ASSY – Long stud	2		X
22	H32-9901	DRUM	2	X	X
		WHEEL END COMPONENTS			
23	KH800104 (H33-0301)	STUD SHORT (M22x94)	16	X	X
23	KH800239 (H33-0302)	STUD LONG (M22x122)	16	X	X
24	KH800096 (H34-0301)	NUT M22 x 32 A/F	16	X	X
24	KH800238 (H34-0302)	NUT M22 x 33 A/F	16	O	O
24	H34-0901	NUT M22 x 32 A/F – 50mm long	16	O	O
25	-	-	-		
26	BTH-0500	BEARING CARTRIDGE (11T)	2		X
26	H12-0400	BEARING OUTER	2	X	
26	H12-0300	BEARING INNER	2	X	
27	373-0243	SEAL	2	X	
27	809 (393-0273)	SEAL	2		X
28	H18-0401	DUST COVER	2	X	X
29	KH800055	SPRING WASHER	12	X	X
30	M8X16X1.75	BOLT – DUST COVER – M8	12	X	X
31	A11-0101	WASHER BEARING	2		X
32	A25-0101	LOCK TAB	2	X	
32	N300002-002	LOCK TAB	2		X
32	A11-0201	LOCK WASHER	2	X	
33	KH800020SG	NUT SPINDLE	2		X
33	A12-0201	NUT SPINDLE – INNER	2	X	
33	A24-0101	NUT SPINDLE – OUTER	2	X	
34	CRS.S	SNAP RING	2		X
35	N300015-002	O-RING – HUB CAP	2		X
36	H15-0102	GASKET – HUB CAP	2	X	
37	KH800110B	HUB CAP – BLACK – Ø139.7PCD	2	X	
37	N300016-002	HUB CAP – ALUM'N – Ø179PCD	2		X
38	KH800055	WASHER – HUB CAP BOLT	12	X	X
39	KH800122	BOLT – HUB CAP – 5/16"	12	X	X
40	STP275	DECAL CAP	2		X
41	10002	FUWA BADGE	2		X
42	FHD046	DECAL	2		X

PARTS VIEW

Ref #	KIT Part No.	Component Part No.	DESCRIPTION	QTY/ AXLE	QTY/ KIT	APPLICATION
A	TBA		CAMSHAFT BUSH REPAIR KIT (suit 1 cam)	2		KIT SUITS: KF37 AXLE
		C12-0102	WASHER, CAMSHAFT SPACER		1	
		C14-0301	SEAL, CAMSHAFT		2	
		C13-0301	CAMSHAFT BUSH (SPIDER)		1	
		C20-0201	BEARING ASSEMBLY-CAMSHAFT		1	
		C15-0102	WASHER, CAMSHAFT SPACER		2	
		C15-0101	WASHER, CAMSHAFT SPACER		2	
		C16-0201	CIRCLIP, CAMSHAFT INNER		1	
		C16-0501	CIRCLIP, CAMSHAFT		1	
B	D20-020101H		BRAKE SHOE HARDWARE KIT	2		KIT SUITS: KF37 AXLE
		NSS	ROLLER		2	
		NSS	ROLLER RETAINER		2	
		NSS	RETURN SPRING		1	
		NSS	RETAINING PIN		2	
		NSS	ANCHOR SPRING		1	
		NSS	ANCHOR PIN		2	
		NSS	ANCHOR PIN BUSH		2	

Ref #	KIT Part No.	Component Part No.	DESCRIPTION	QTY/ AXLE	QTY/ KIT	APPLICATION
C	ABSKIT-01		ABS KIT	1		KIT SUITS: TN AXLE
		A15-0202	ABS SENSOR LEAD (straight)		2	
		A16-0101	SLEEVE		2	
		H41-0201	ABS POLE RING – 100 Tooth – Ø165***		2	
D	ABSKIT-02		ABS KIT	1		KIT SUITS: UNITISED AXLE
		A15-0202	ABS SENSOR LEAD (straight)		2	
		A16-0101	SLEEVE		2	
		H41-0701	ABS POLE RING – 100 Tooth – Ø168ID		2	



***: The ID of 165mm is for axles manufactured from 2009, prior to that the ID may be different.

- Note: TN – tapered spindle (small & big bearing)
 X: Standard | NSS: Not Sold Separately | O: Optional
 Hub Cap: May vary (Oil hubs, Customer specs & Hub-odometer may require different hub caps)
1. Studs may be short or long, check before you order.
 2. Long Nut # H34-0901 (32mm A/F) can be used on long studs with steel wheels.