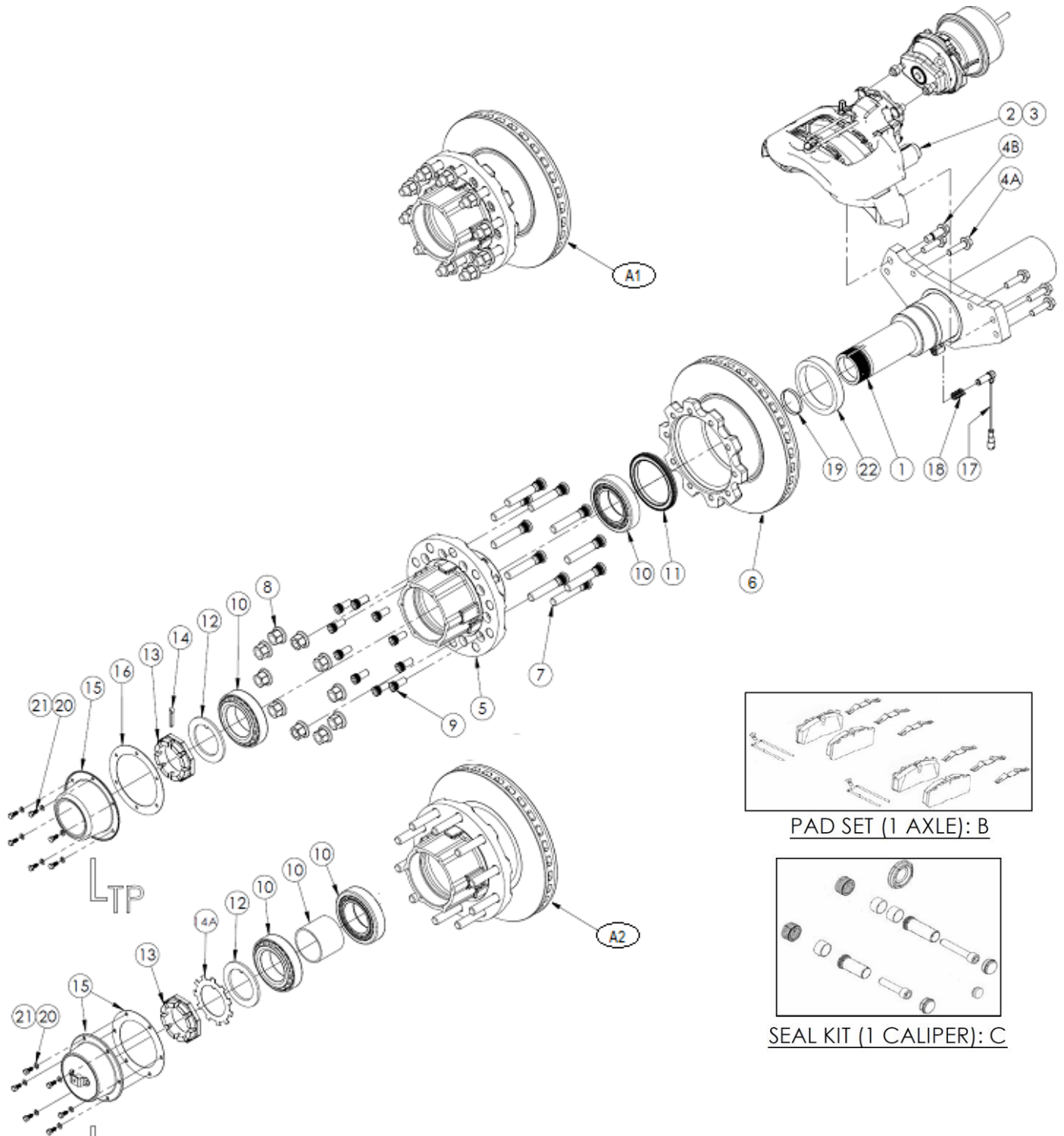


# PARTS VIEW

## KF23 DISC BRAKE AXLE (PAN22)



ConMet PRESET & PreSet *PLUS*

**IMAGES FOR ILLUSTRATION PURPOSES ONLY**

# PARTS VIEW

**Note:** TP Parallel spindle (two bearings the same size)  
 X Standard  
 NSS Not Sold Separately  
 O Optional  
 Hub Cap May vary (Oil hubs, Customer specs & Hub-odometer may require different hub caps)

1. Studs in the hub, may be short or long, check before you order.
2. Ref No. 8, The Long Nut # H34-0901 can be used on long studs with steel wheels.

Ref No.	PART No.	BEAM OPTIONS				
		DESCRIPTION	QTY. PER AXLE	1850		
TP	ConMet Preset			ConMet Preset PLUS		
1	FP20DB0500	BEAM – Ø127x19	1	X	X	
1	FP26DB1500	BEAM – Ø146x10 With MBS Weweler suspension ONLY!	1	X	X	
1	FP20DB01	BEAM – Ø127x19	1			X

Ref No.	PART No.	CALIPER			
		DESCRIPTION	QTY. PER AXLE	PAN 22	
TP	ConMet Preset			ConMet Preset PLUS	
2	6402251200	CALIPER – LH – WABCO PAN 22	1	X	X
3	6402251210	CALIPER – RH – WABCO PAN 22	1	X	X
4A	B30-0101	FLANGED BOLT – M16	10	X	X
4B	B30-0200	FLANGED SHOULDER BOLT – M16	2	X	X
B	12 999 796	PAD SET	1	X	X
C	640 225 921 2	CALIPER SEAL KIT	2	X	X

Ref No.	PART No.	HUB OPTIONS				
		DESCRIPTION	QTY. PER AXLE	10 x 285		
TP	ConMet Preset			ConMet Preset PLUS		
A1	H30-D202	HUB/ROTOR ASSEMBLY	2	X		
A2	10016242	HUB/ROTOR ASSEMBLY Alu c/w all Barings, spacer and seal Casting number: 10016225 (used for lube volume)	2		X	
A2	10083556	HUB/ROTOR ASSEMBLY Iron c/w all Barings, spacer and seal Casting number: 10083549 (used for lube volume)	2		X	
5	H31-D201	HUB – 10x285	2	X		
5	NSS	HUB – 10x285 – PRESET Cast Steel	2		X	
5	NSS	HUB – 10x285 – PRESET Aluminium	2		X	
6	H32-D002	BRAKE ROTOR – Ø430 – PAN 22	2	X		
6	10082074	BRAKE ROTOR – Ø430 – PAN 22	2		X	

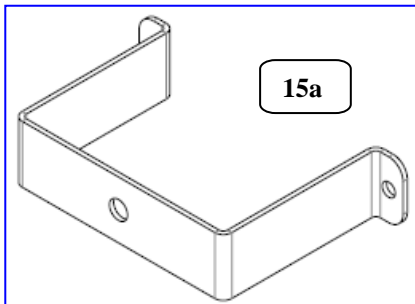
1lt of SYNTHETIC SEMI FLUID GREASE  
 MOBILITH SHC007  
 Part Number: 133680-1L

**Note:** Check service information for correct fill qty.



# PARTS VIEW

Ref No.	PART No.	WHEEL END COMPONENTS				
		DESCRIPTION	QTY. PER AXLE	TP	ConMet Preset	ConMet Preset <b>PLUS</b>
7	KH800104 (H33-0301)	STUD SHORT (M22x94)	20	X	X	X
7	KH800239 (H33-0302)	STUD LONG (M22x122)	20	X	X	X
8	KH800096 (H34-0301)	NUT M22 x 32 A/F	20	X	N/A	N/A
8	KH800238 (H34-0302)	NUT M22 x 33 A/F	20	O	N/A	N/A
8	H34-0901	NUT M22 x 32 A/F – 50mm long	20	O	N/A	N/A
9	KHDB014	BOLT – HUB/ROTOR – M16	20	X	N/A	N/A
10	H12-0100	BEARING	4	X		
10	10081731	PRESET BEARING KIT c/w Bearings, Spacer, Seal	2		X	X
11	801 (373-0223)	SEAL	2	X	X	X
12	A11-0101	WASHER – BEARING	2	X	X	
13	A12-0101	SPINDLE NUT	2	X	X	
14	A13-0101	COTTER PIN	2	X		
14A	N300002-002	TAB WASHER	2		X	
15	H14-0301	HUB CAP – Normal adjustable Bearings	2	X		
15	10085634	HUB CAP – ConMet Preset **	2		X	X
15a	N300202-003	HUBO BRACKET	As required			
16	KH3303118	GASKET – HUB CAP	2	X	X	X
17	A15-0101	ABS SENSOR LEAD (400mm)	2	X	X	X
18	A16-0101	SLEEVE	2	X	X	X
19	B16-0202	EXPANSION PLUG	2	X	X	X
20	KH800055	WASHER – HUB CAP BOLT	12	X	X	X
21	KH800122	BOLT – HUB CAP – 5/16"	12	X	X	X
22	N300200-003	SEAL SHIELD	2	X		



\*\* Upon removing the hub cap, the new PreSet PLUS spindle nut looks distinctly different and is contained in the hub. For all the service information please see the ConMet Service manual.

## PreSet Plus Spindle Nut System

ConMet's patented integrated nut system significantly improves wheel end clamp load, makes installation easier, aids in removal of the hub and provides improved safety features.

