



# FUWA K HITCH (Australia) Pty Ltd

ABN 54 078 731 209

**Head Office  
Melbourne**  
13-21 Bliss Court  
Derrimut VIC 3026  
Tel. 03 9369 0000  
Fax. 03 9369 0100

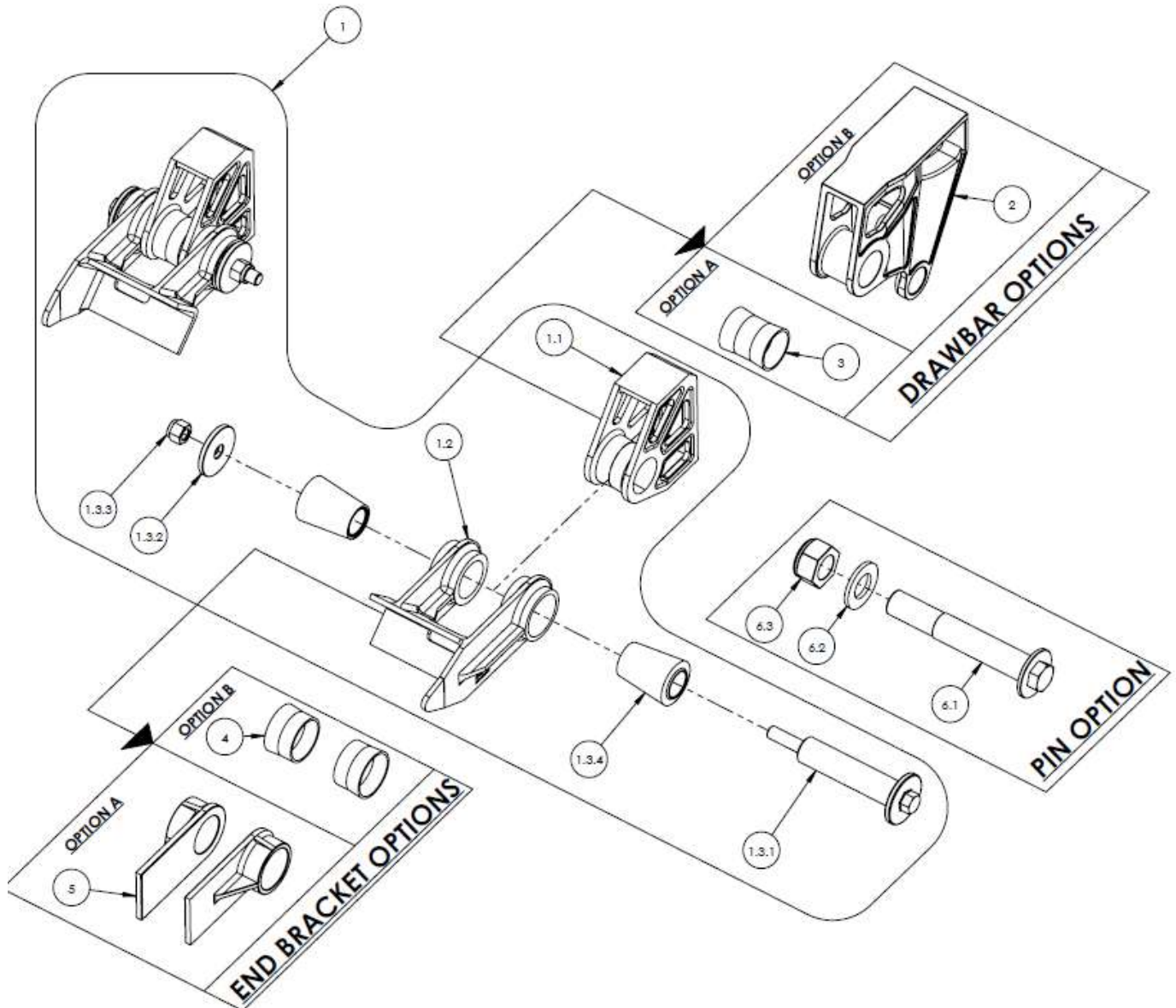
**Queensland**  
41 Moreton Street  
Heathwood Qld 4110  
Tel. 07 3372 2223  
Fax. 07 3372 1022

**Perth**  
5 Freight Rd  
Kenwick WA 6107  
Tel. 08 9350 6470  
Fax. 08 9350 6570

## DRAWBAR ASSEMBLY OPTIONS

SPB-021-096

15.07.2021



REPLACEMENT OPTIONS				
ITEM TO BE REPLACED	ITEM No.	PART NUMBER	DESCRIPTION	QTY.
DRAWBAR (KH600068)	2	KH600066	DRAWBAR - FRONT HANGER	1
	3	AFB01	BOSS - FRAME 'A' INNER	1
END BRACKET (KH600069)	4	AFC01	BOSS - FRAME 'A' OUTER	2
	5	KH600070	DRAWBAR CHEEK	2
PIN ASSEMBLY	PIN (1201)	6.1	1201DB-01 EQUALIZER PIN - M48x5.0	1
	WASHER (WA.65)	6.2	1201DB-02 M48 WASHER	1
	NUT (1201N)	6.3	1201DB-03 M48x5.0 NUT	1

ITEM NO.	PART NUMBER	DESCRIPTION	QTY.
1	KHDK6001	DRAWBAR KIT	1
1.1	KH600068	DRAWBAR	2
1.2	KH600069	DRAWBAR - END BRACKET	2
1.3	KH690018B	PIN & BUSH ASSEMBLY - ROCKER	2
1.3.1	1201	EQUALIZER PIN - 1"x12 TPI UNF	1
1.3.2	WA.65	COMPRESSOR WASHER	1
1.3.3	1201N	1"-12UNF NYLOC NUT - GRADE B	1
1.3.4	1101M	EQUALIZER BUSH TAPERED - MULLINS	2