

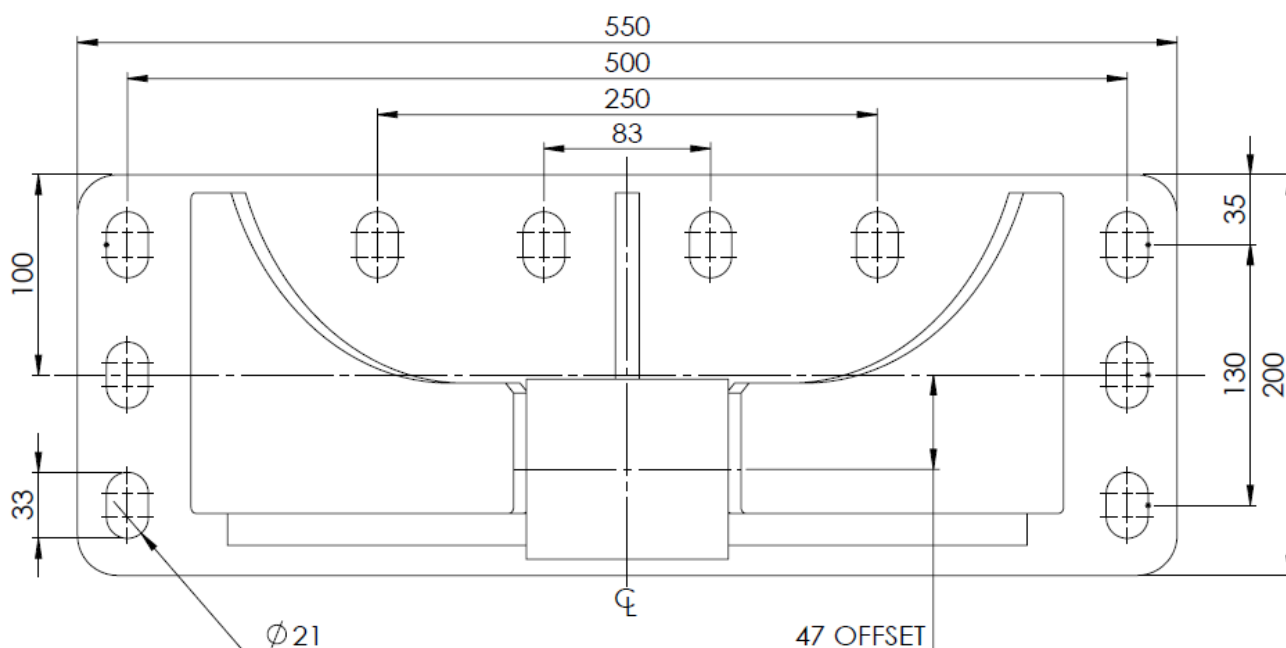
## FOOT ATTACHMENT TO A BASE PLATE KS & KD

All FKH 5th wheels must be fitted strictly in accordance with Australian Standard:  
**AS 4968.2:2003 and VSB6 Section P.**

The installation must only be performed by a qualified tradesman (mechanic / welder).

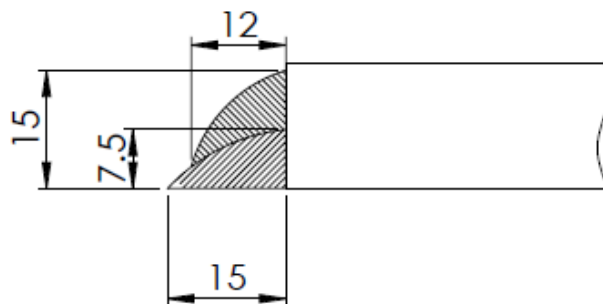
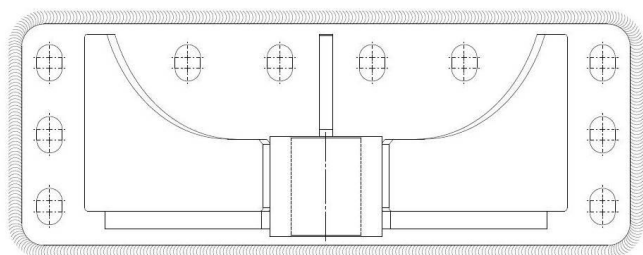
If you need more detailed information call FKH engineering.

### KS15E90 Komodo40



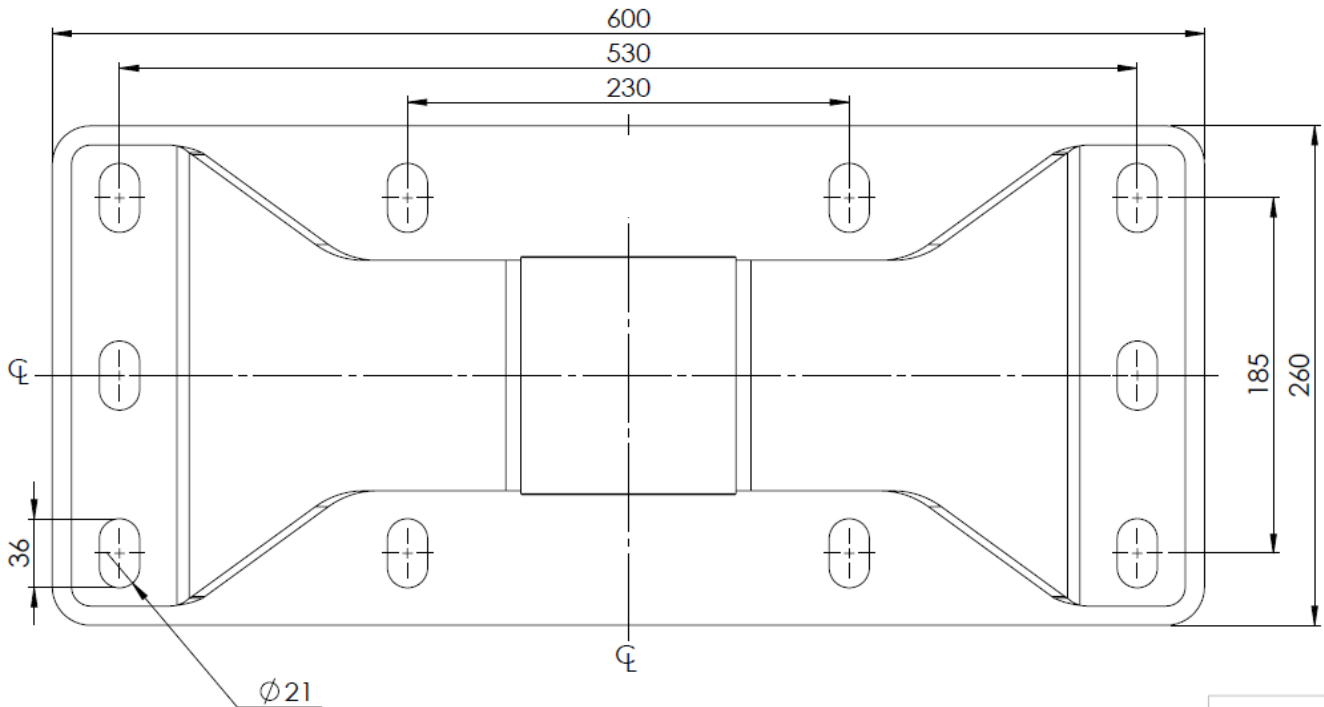
The feet can be bolted to the base plate with: **M20x1.5 10.9** bolts torqued to 600Nm (dry).

Or the feet can be welded to the base plate:



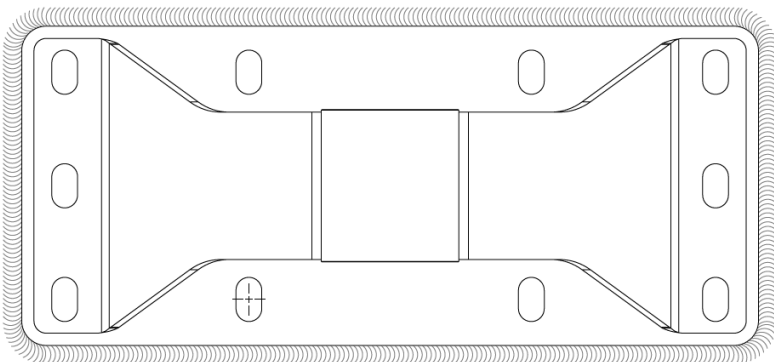
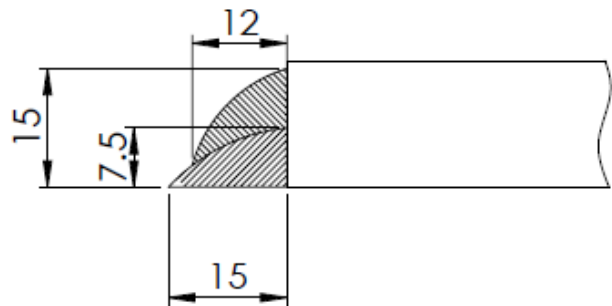
# INSTALLATION, MAINTENANCE & SERVICE BULLETIN

## KS16F90 Komodo75



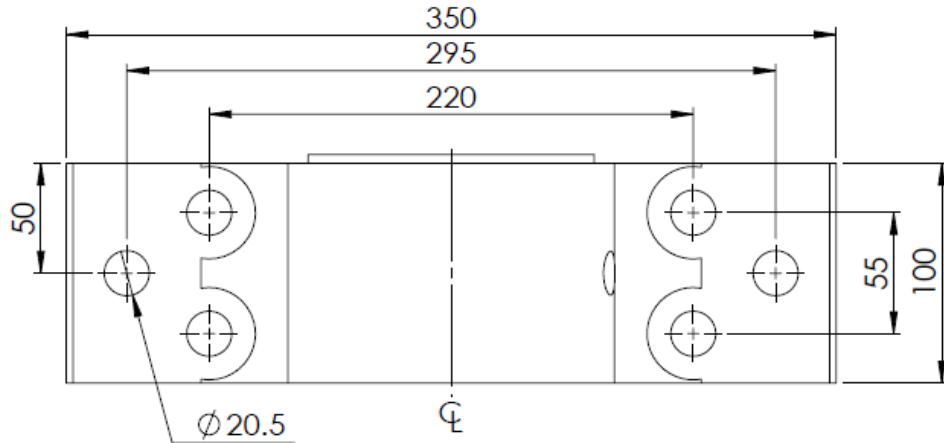
The feet can be bolted to the base plate with: **M20x1.5 10.9** bolts torqued to 600Nm (dry).

Or the feet can be welded to the base plate:



# INSTALLATION, MAINTENANCE & SERVICE BULLETIN

## KD15E90 Komodo50



The feet can only be bolted to the base plate with: **M20x1.5 10.9** bolts torqued to 600Nm (dry).

Shear blocks:

