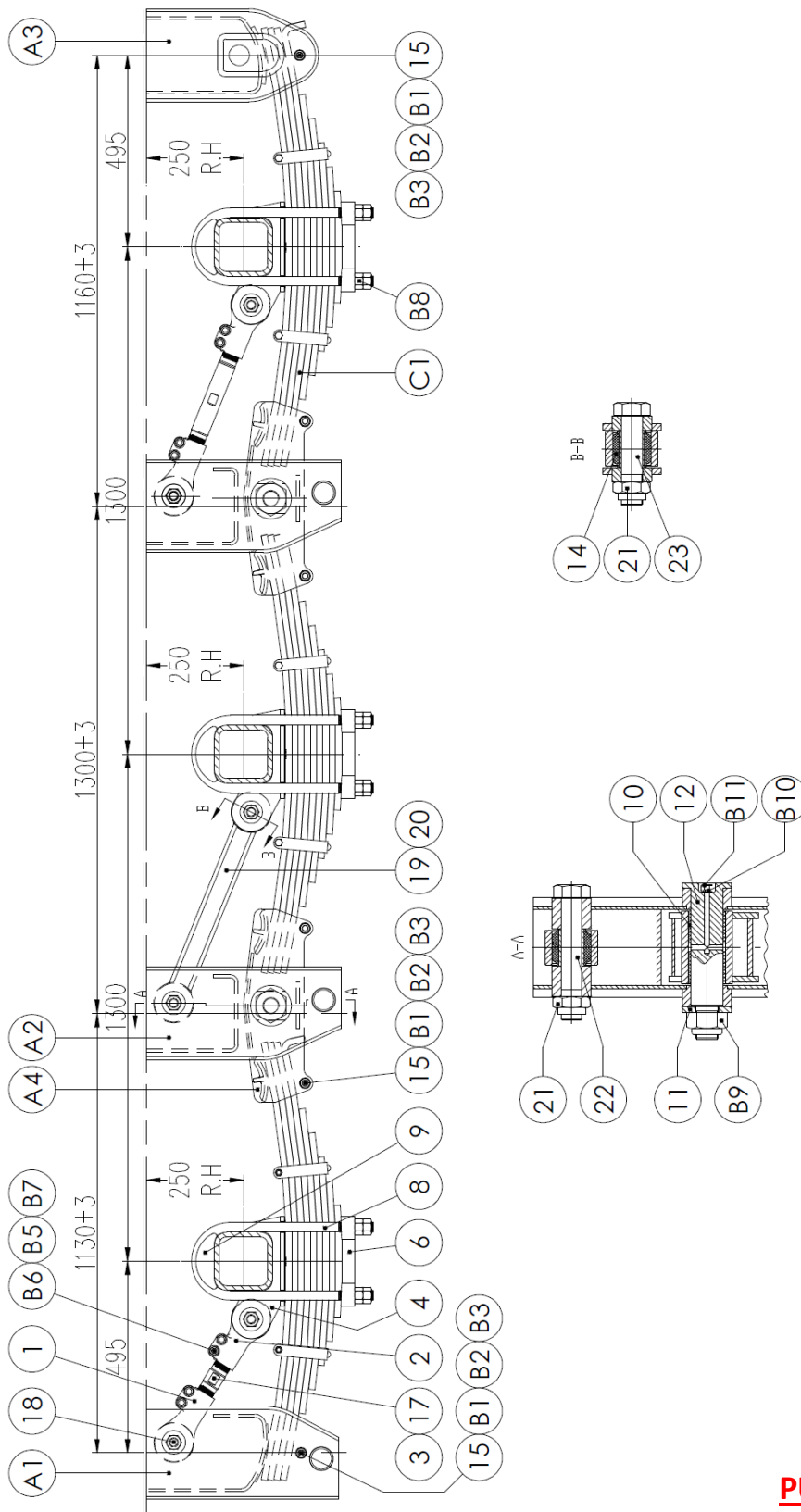


PARTS VIEW

MECH. SUSPENSION FW86B – 17t

UNDESSLUNG



**IMAGES FOR
 ILLUSTRATION
 PURPOSES ONLY**

PARTS VIEW

UNDERSLUNG

Ref No.	PART No.	DESCRIPTION	APPLICATIONS	
			Standard	Heavy Duty
1	FS16-0501L	RADIUS ROD END	3	3
2	FS16-0501R	RADIUS ROD END	3	3
3	FS16-0503/250	RADIUS ROD SCREW	1	1
4	FW86-05041	AXLE SEAT	6	6
5	-	-	-	-
6	FW86-05061	SPRING SEAT	6	6
7	-	-	-	-
8	FW86-06091/370	U-BOLT ASSEMBLY	12	12
9	FW96-05091	SPRING CLAMP PLATE	6	6
10	FW86-0510/80	ROCKER SHAFT BUSH (STEEL)	8	-
10	FS16-0510/80N	ROCKER SHAFT BUSH (VESCONITE)	-	8
11	FW86-0511	EQUALISER WASHER	4	4
12	FW86-0512KH	ROCKER SHAFT only NO NUT! See B9	4	-
12	FW86-0512KHR	ROCKER SHAFT only (HARD CHROMED) NO NUT! See B9	-	4
13	-	-	-	-
14	FW86-0514	RADIUS ROD BUSH (RUBBER/STEEL - ID 36mm)	12	12
14	KF86-051400SS	RADIUS ROD BUSH (POLYURETHANE/STAINLESS STEEL) 36mm	(12)	(12)
14	FW86-0514F	HD RADIUS ROD BUSH (STEEL/RUBBER/STEEL - ID 36mm)	(12)	(12)
15	FW88-0515	SPACER TUBE	12	12
16	-	-	-	-
17	FS16-0517/380	FIXED RADIUS ROD - FRONT	1	-
17	FW86-0517/380	FIXED RADIUS ROD - FRONT	-	1
18	FS16-0518/185	PIN	2	2
19	FS16-0503/415	RADIUS ROD BOLT	2	2
20	FS16-0517/530	FIXED RADIUS ROD	2	-
20	FW86-0517/530	FIXED RADIUS ROD	-	2
21	FS16-0521	NUT	12	12
22	FS16-0518/215	PIN	4	4
23	FS16-0518/155	PIN	6	6

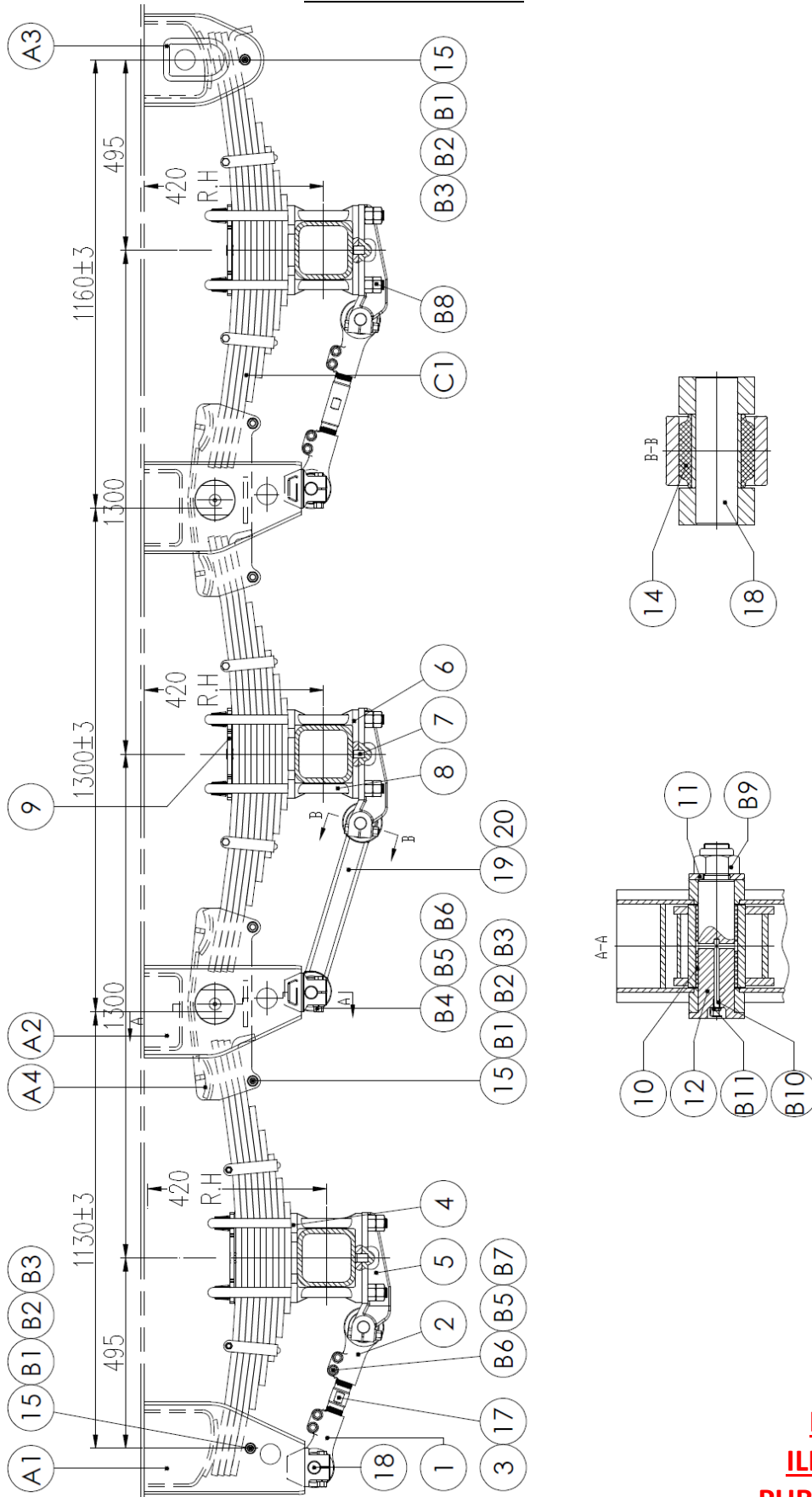
PARTS VIEW

UNDERSLUNG

Ref No.	PART No.	DESCRIPTION	APPLICATIONS	
			Standard	Heavy Duty
A1	FW86-0100I/250	FRONT HANGER	2	2
A2	FW86-0200I/250	EQUALISER HANGER	4	2
A3	FW86-0300/401	REAR HANGER	2	2
A4	FW86/1310-0400/80	ROCKER	4	4
B1	GB/T5780-86	BOLT	12	-
B1	GB/T5780-1986	BOLT	-	12
B2	GB/T41-86	NUT	12	-
B2	GB/T41-1986	NUT	-	12
B3	GB/T93-87	SPRING WASHER	12	-
B3	GB/T93-1987	SPRING WASHER	-	12
B4	-	-	-	-
B5	N24/2	NUT	12	12
B6	KHBS14	SPRING WASHER	12	12
B7	KHB14/60/200	BOLT	12	12
B8	N24/2	NUT	48	48
B9	LM42/3	LOCK NUT	4	4
B10	GB/T1152-79	GREASE NIPPLE	4	-
B10	GB/T1152-1979	GREASE NIPPLE	-	4
B11	FW88-0516	GREASE NIPPLE CAP	4	4
C1	KFJZP40.6.6	SPRING – 9 LEAF – 9x90x16	6	6

PARTS VIEW

OVERSLUNG



**IMAGES FOR
 ILLUSTRATION
 PURPOSES ONLY**

PARTS VIEW

OVERSLUNG

Ref No.	PART No.	DESCRIPTION	APPLICATIONS	
			Standard	Heavy Duty
1	FS16-0501L	RADIUS ROD END	3	3
2	FS16-0501R	RADIUS ROD END	3	3
3	FS16-0503/250	RADIUS ROD SCREW	1	1
4	FW88-0504	SPRING SEAT	6	6
5	FW86-0505	TEETERBOARD	6	6
6	FW88-0506	AXLE SEAT	6	6
7	FW88-0507	PIN – FIXED POSITION	6	6
8	FW88-0508/453	U-BOLT - ONLY	12	12
8+B8	FW88-0609/453	U-BOLT + NUTS	12 + 48	12 + 48
9	FW88-0509	SPRING CLAMP PLATE	6	6
10	FW86-0510/80	ROCKER SHAFT BUSH (STEEL)	8	-
10	FS16-0510/80N	ROCKER SHAFT BUSH (VESCONITE)	-	8
11	FW86-0511	EQUALISER WASHER	4	4
12	FW86-0512KH	ROCKER SHAFT only NO NUT! See B9	4	-
12	FW86-0512KHR	ROCKER SHAFT only (HARD CHROMED) NO NUT! See B9	-	4
13	-	-	-	-
14	FW86-0514	RADIUS ROD BUSH (RUBBER/STEEL - ID 36mm)	12	12
14	KF86-051400SS	RADIUS ROD BUSH (POLYURETHANE/STAINLESS STEEL) 36mm	(12)	(12)
14	FW86-0514F	HD RADIUS ROD BUSH (STEEL/RUBBER/STEEL - ID 36mm)	(12)	(12)
15	FW88-0515	SPACER TUBE	12	12
16	-	-	-	-
17	FS16-0517/385	FIXED RADIUS ROD - FRONT	1	-
18	FW86-0518	PIN TEETERBOARD	12	12
19	FS16-0503/325	RADIUS ROD BOLT	2	2
20	FS16-0517/455	FIXED RADIUS ROD	2	-

PARTS VIEW

OVERSLUNG

Ref No.	PART No.	DESCRIPTION	APPLICATIONS	
			Standard	Heavy Duty
A1	FW86-0100/395	FRONT HANGER	2	2
A2	FW86-0200/401	EQUALISER HANGER	4	2
A3	FW86-0300/231	REAR HANGER	2	2
A4	FW86/1310-0400/80	ROCKER	4	-
B1	GB/T5780-86	BOLT	12	-
B1	GB/T5780-1986	BOLT	-	12
B2	KHBN13	NUT	12	12
B3	KHBS14	SPRING WASHER	12	12
B4	KHB14/60/200	BOLT	24	24
B5	N24/2	NUT	12	12
B6	KHBS14	SPRING WASHER	12	12
B7	KHB14/60/200	BOLT	12	12
B8	GB/T41-1986	NUT	48	48
B9	LM42/3	LOCK NUT	4	4
B10	GB/T1152-79	GREASE NIPPLE	4	-
B10	GB/T1152-1979	GREASE NIPPLE	-	4
B11	FW88-0516	GREASE NIPPLE CAP	4	4
C1	KFJZP40.6.6	SPRING – 9 LEAF – 9x90x16	6	6