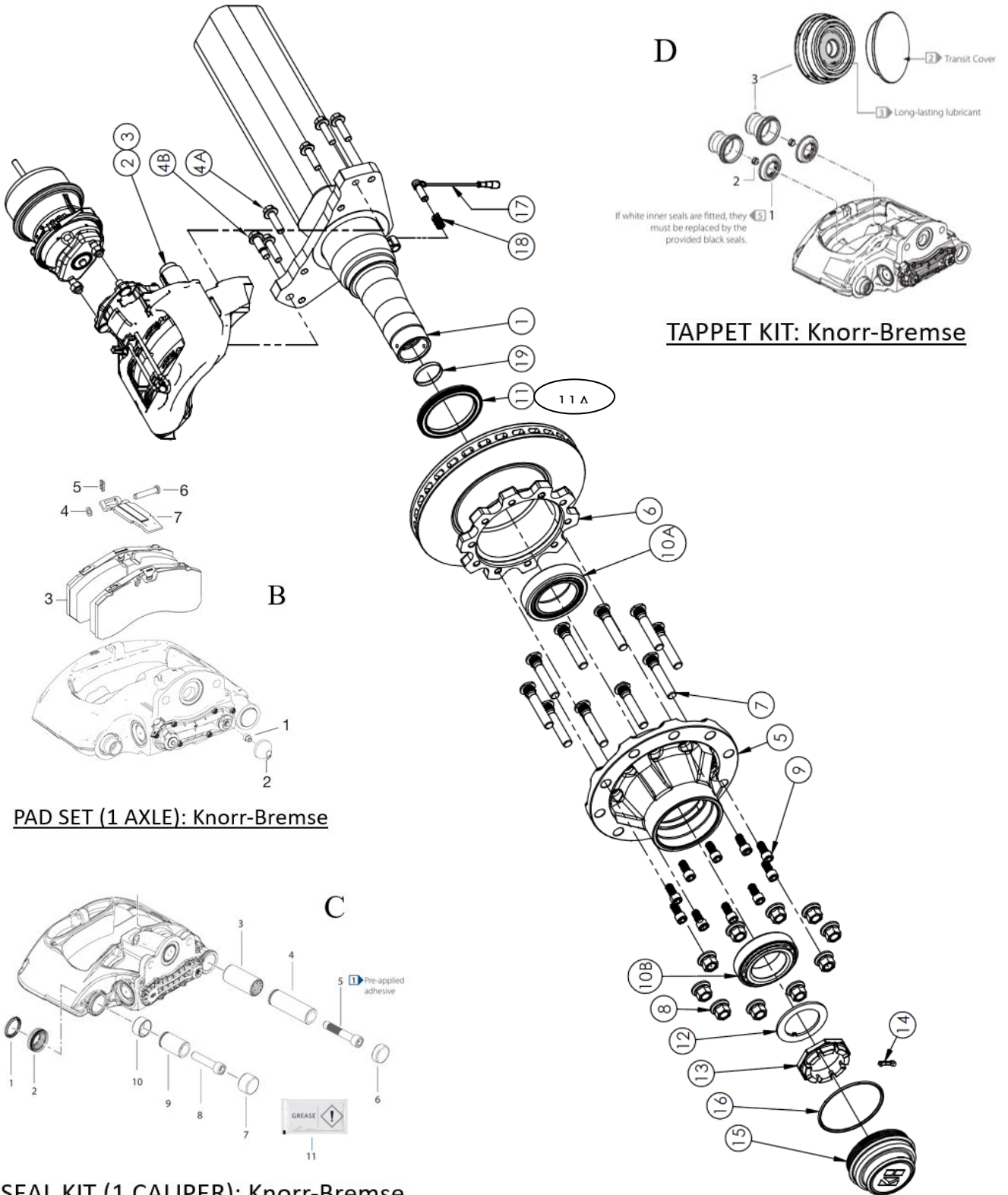


PARTS VIEW

FB24/FB2C - HD DISC BRAKE AXLE (PAN22/SC7)



PAD SET (1 AXLE): Knorr-Bremse

TAPPET KIT: Knorr-Bremse

SEAL KIT (1 CALIPER): Knorr-Bremse

IMAGES FOR ILLUSTRATION PURPOSES ONLY

PARTS VIEW

Ref No.	PART No.	DESCRIPTION	APPLICATION	
		BEAM OPTIONS		
			QTY.	1850, TN
1	TBA	BEAM – 150sqx16	1	X
		CALIPER		
			QTY.	PAN 22 / SC7
2	6402251200	CALIPER – LH – WABCO PAN 22	1	X
	K152502K50	CALIPER – LH – Knorr-Bremse SC7	1	X
3	6402251210	CALIPER – RH – WABCO PAN 22	1	X
	K152503K50	CALIPER – RH – Knorr-Bremse SC7	1	X
4A	B30-0103	FLANGED BOLT – M16 – WABCO PAN 22	10	X
		FLANGED BOLT – M16 – Knorr-Bremse SC7	8	X
4B	B30-0202	FLANGED SHOULDER BOLT – M16 – WABCO PAN 22	2	X
		FLANGED SHOULDER BOLT – M16 – Knorr-Bremse SC7	4	X
B	12999796	PAD SET – WABCO PAN 22	1	X
	K283636K50	PAD SET – Knorr-Bremse SC7	1	X
C	6402259212	CALIPER SEAL KIT – WABCO PAN 22	2	X
	K152500K50	CALIPER SEAL KIT – Knorr-Bremse SC7	2	X
D	K201731K50	TAPPET KIT – Knorr-Bremse SC7	1	X
		HUB OPTIONS		
			QTY.	10x335
5	H31-6101DB	HUB – 10x335	2	X
6	H32-D002	BRAKE ROTOR – Ø430 – PAN 22	2	X
		WHEEL END COMPONENTS		
			QTY.	TN
7	KH800104 (H33-0301)	STUD SHORT (M22x94)	20	X
7	KH800239 (H33-0302)	STUD LONG (M22x122)	20	X
7	H33-2602 (AS OF 2021)	STUD LONG (M24x122)	20	X
8	KH800096 (H34-0301)	NUT M22 x 32 A/F	20	X
8	KH800238 (H34-0302)	NUT M22 x 33 A/F	20	O
8	H34-0401 (AS OF 2021)	NUT M24 x 34 A/F	20	X
8	H34-0901	NUT M22 x 32 A/F – 50mm long	20	O
9	KHDB014	BOLT – HUB/ROTOR – M16	20	X
10A	H12-0200	BEARING INNER	2	X
10B	H12-0100	BEARING OUTER	2	X
11	H11-0300	SEAL (KH800120)	2	X
11A	N300200-004 (NS)	SEAL SHIELD	2	X
12	A11-0101	WASHER – BEARING	2	X
13	A12-0101	SPINDLE NUT	2	X
14	A13-0101	COTTER PIN	2	X
15	KH800205B	HUB CAP – SCREW ON	2	X
16	H15-0201	O-RING – HUB CAP	2	X
17	A15-0101	ABS SENSOR LEAD (400mm)	2	X
18	A16-0101	SLEEVE	2	X
19	B16-0201	EXPANSION PLUG	2	X

Note: TN – Taper spindle (small and big bearing)
 X: Standard | NSS: Not Sold Separately | O: Optional | NS: Not shown
 Hub Cap: May vary (Oil hubs, Customer specs & Hub-odometer may require different hub caps)
 1. Studs may be short or long, check before you order.
 2. Long Nut # H34-0901 (32mm A/F) can be used on long studs with steel wheels.