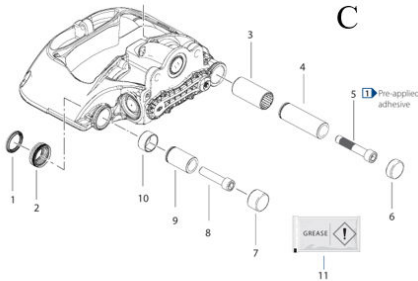


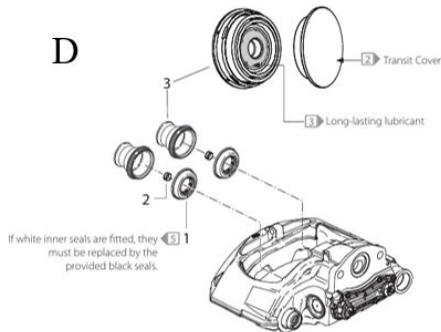
PARTS VIEW

KF23/KF2C DISC BRAKE AXLE (PAN22 / SC7)

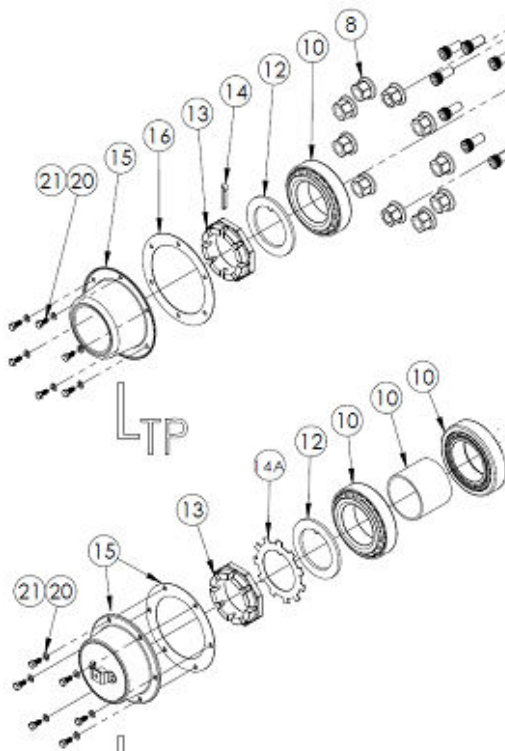
IMAGES FOR ILLUSTRATION PURPOSES ONLY



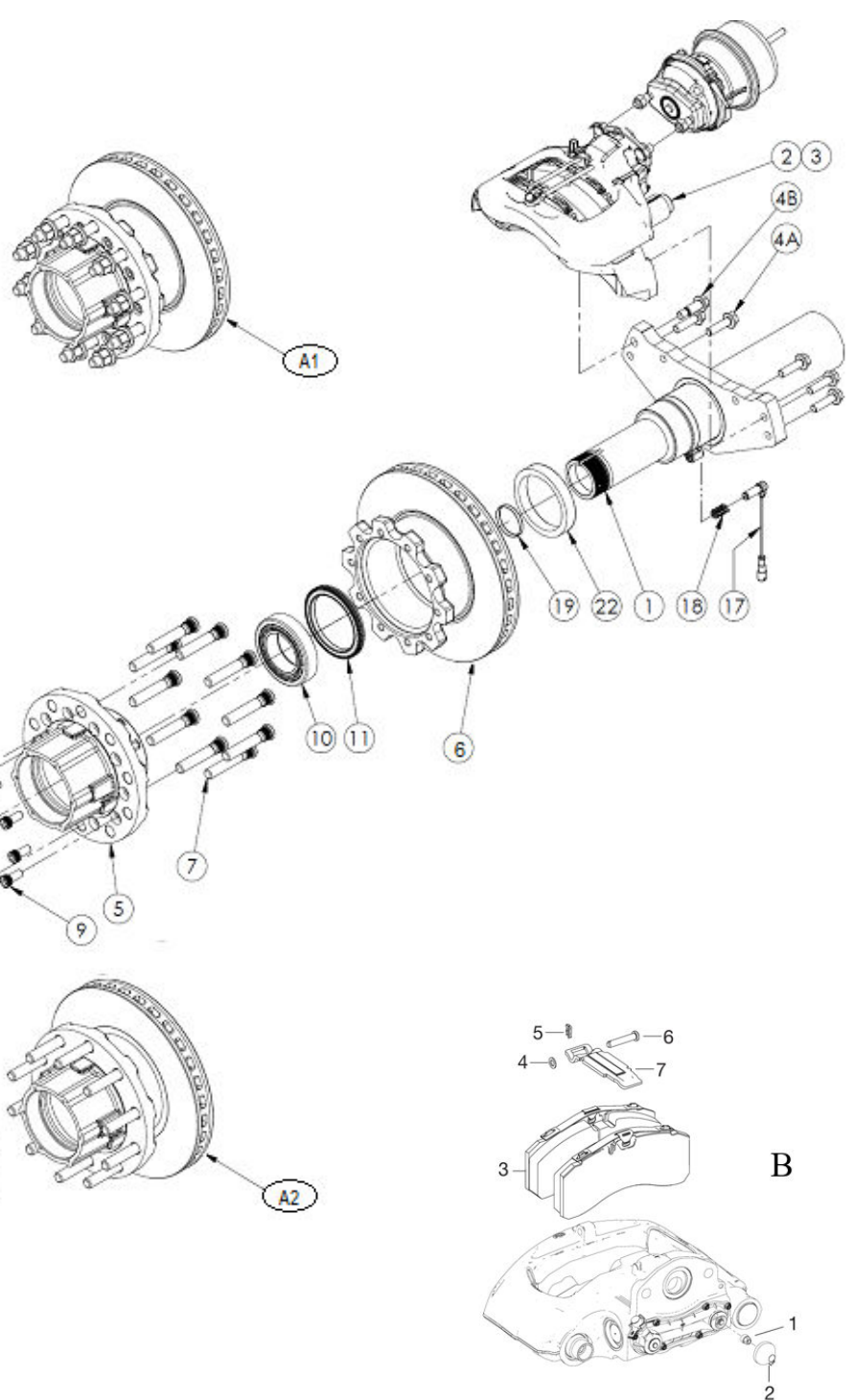
SEAL KIT (1 CALIPER): Knorr-Bremse



TAPPET KIT: Knorr-Bremse



ConMet PRESET & PreSet PLUS



PAD SET (1 AXLE): Knorr-Bremse

Note: TP Parallel spindle (two bearings the same size)
 X Standard

PARTS VIEW

NSS Not Sold Separately
 O Optional
 Hub Cap May vary (Oil hubs, Custom specs & Hub-odometer)

1. Studs in the hub, may be short or long, check before you order.
2. Ref No. 8, the Long Nut # H34-0901 can be used on long studs with steel wheels.

Ref No.	PART No.	BEAM OPTIONS				
		DESCRIPTION	QTY. PER AXLE	1850		
				TP	ConMet Preset	ConMet Preset PLUS
1	FP20DB0500	BEAM – Ø127x19	1	X	X	
1	FP26DB1500	BEAM – Ø146x10 With MBS Weweler suspension ONLY!	1	X	X	
1	FP20DB01	BEAM – Ø127x19	1			X

Ref No.	PART No.	CALIPER			
		DESCRIPTION	QTY. PER AXLE	PAN 22 / SC7	
				TP	ConMet Preset
2	6402251200	CALIPER – LH – WABCO PAN 22	1	X	X
	K152502K50	CALIPER – LH – Knorr-Bremse SC7	1	X	X
3	6402251210	CALIPER – RH – WABCO PAN 22	1	X	X
	K152503K50	CALIPER – RH – Knorr-Bremse SC7	1	X	X
4A	B30-0101	FLANGED BOLT – M16 – WABCO PAN 22	10	X	X
		FLANGED BOLT – M16 – Knorr-Bremse SC7	8	X	X
4B	B30-0200	FLANGED SHOULDER BOLT – M16 – WABCO PAN 22	2	X	X
		FLANGED SHOULDER BOLT – M16 – Knorr-Bremse SC7	4	X	X
B	12999796	PAD SET – WABCO PAN 22	1	X	X
	K283636K50	PAD SET – Knorr-Bremse SC7	1	X	X
C	6402259212	CALIPER SEAL KIT – WABCO PAN 22	2	X	X
	K152500K50	CALIPER SEAL KIT – Knorr-Bremse SC7	2	X	X
D	K201731K50	TAPPET KIT – Knorr-Bremse SC7	1	X	X

Ref No.	PART No.	HUB OPTIONS				
		DESCRIPTION	QTY. PER AXLE	10 x 285		
				TP	ConMet Preset	ConMet Preset PLUS
A1	H30-D202	HUB/ROTOR ASSEMBLY	2	X		
A2	10016242	HUB/ROTOR ASSEMBLY Alu c/w all Barings, spacer and seal Casting number: 10016225 (used for lube volume)	2		X	
A2	10083556	HUB/ROTOR ASSEMBLY Iron c/w all Barings, spacer and seal Casting number: 10083549 (used for lube volume)	2		X	
5	H31-D201	HUB – 10x285	2	X		
5	NSS	HUB – 10x285 – PRESET Cast Steel	2		X	
5	NSS	HUB – 10x285 – PRESET Aluminium	2		X	
6	H32-D002	BRAKE ROTOR – Ø430 – PAN 22	2	X		
6	10082074	BRAKE ROTOR – Ø430 – PAN 22	2		X	

1lt of SYNTHETIC SEMI FLUID GREASE

MOBILITH SHC007

Part Number: 133680-1L



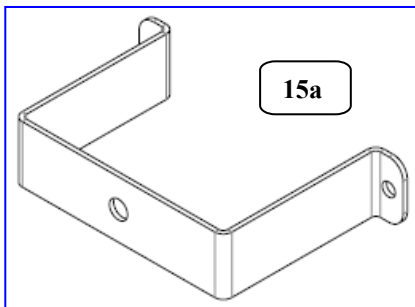
Note: Check service information for correct fill qty.

For Product Support call: (03) 9369 0000 | (07) 3372 2223 | (08) 9350 6470

www.khitch.com.au Uncontrolled document when printed **Bulletin No: KPS-004-0513 Rev16** 2

PARTS VIEW

Ref No.	PART No.	WHEEL END COMPONENTS				
		DESCRIPTION	QTY. PER AXLE	TP	ConMet Preset	ConMet Preset PLUS
7	KH800104 (H33-0301)	STUD SHORT (M22x94)	20	X	X	X
7	KH800239 (H33-0302)	STUD LONG (M22x122)	20	X	X	X
8	KH800096 (H34-0301)	NUT M22 x 32 A/F	20	X	N/A	N/A
8	KH800238 (H34-0302)	NUT M22 x 33 A/F	20	O	N/A	N/A
8	H34-0901	NUT M22 x 32 A/F – 50mm long	20	O	N/A	N/A
9	KHDB014	BOLT – HUB/ROTOR – M16	20	X	N/A	N/A
10	H12-0100	BEARING	4	X		
10	10081731	PRESET BEARING KIT c/w Bearings, Spacer, Seal	2		X	X
11	801 (373-0223)	SEAL	2	X	X	X
12	A11-0101	WASHER – BEARING	2	X	X	
13	A12-0101	SPINDLE NUT	2	X	X	
14	A13-0101	COTTER PIN	2	X		
14A	N300002-002	TAB WASHER	2		X	
15	H14-0301	HUB CAP – Normal adjustable Bearings	2	X		
15	10085634	HUB CAP – ConMet Preset **	2		X	X
15a	N300202-003	HUBO BRACKET	As required			
16	KH3303118	GASKET – HUB CAP	2	X	X	X
17	A15-0101	ABS SENSOR LEAD (400mm)	2	X	X	X
18	A16-0101	SLEEVE	2	X	X	X
19	B16-0202	EXPANSION PLUG	2	X	X	X
20	KH800055	WASHER – HUB CAP BOLT	12	X	X	X
21	KH800122	BOLT – HUB CAP – 5/16"	12	X	X	X
22	N300200-003	SEAL SHIELD	2	X		



** Upon removing the hub cap, the new PreSet PLUS spindle nut looks distinctly different and is contained in the hub. For all the service information please see the ConMet Service manual.

