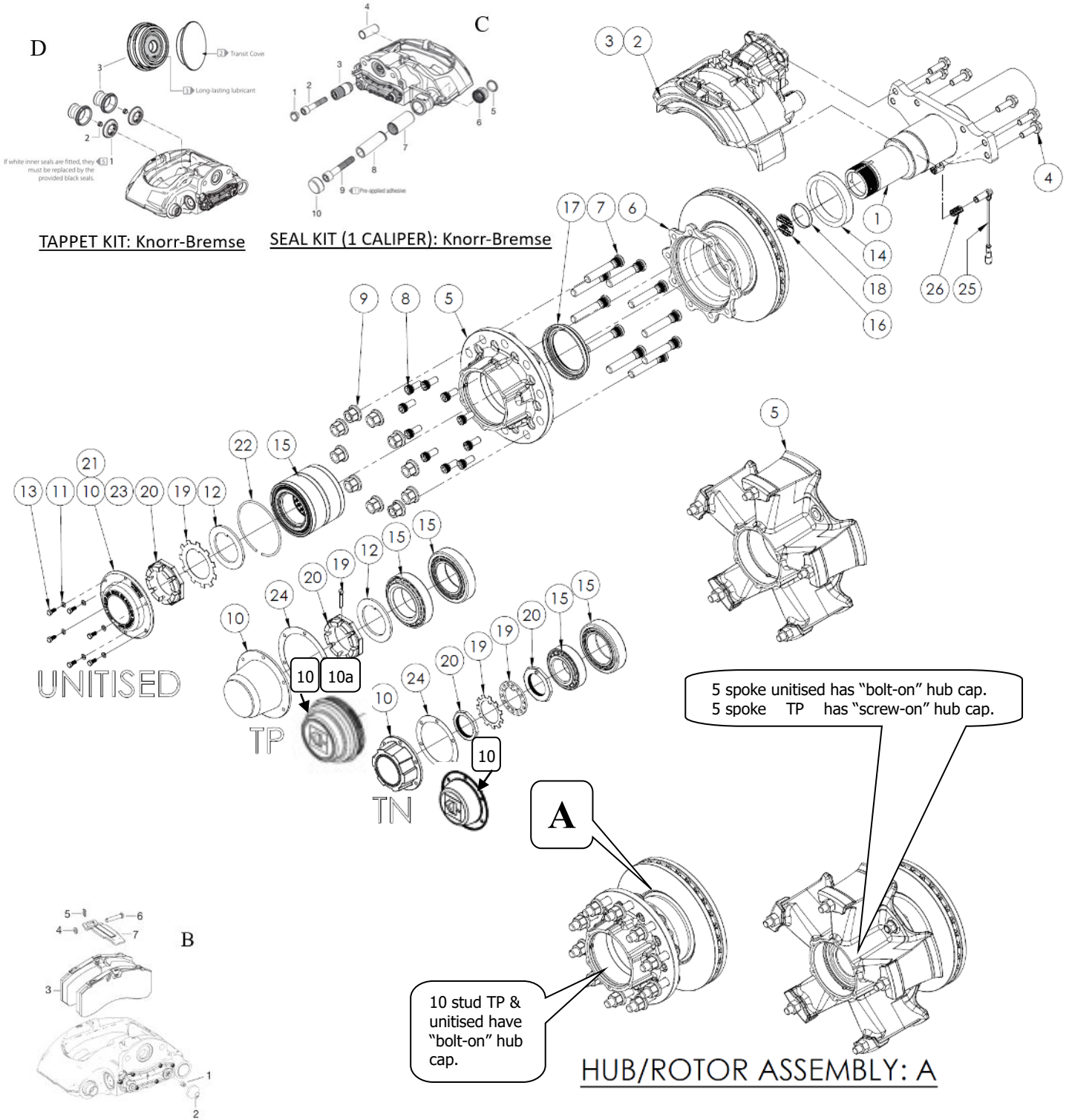


# PARTS VIEW

## KF26/KF2N & KF36/KF3N - DISC BRAKE AXLE (PAN19/SN6)



**IMAGES FOR ILLUSTRATION PURPOSES ONLY**



# PARTS VIEW

Ref No.	PART No.	DESCRIPTION	APPLICATION								
			<b>BEAM OPTIONS</b>								
			QTY Per Axle	1850			1820				
				TN	TP	UNIT	TN	UNIT			
1	FN20DB0100	BEAM	1	X							
1	FP20DB0100	BEAM 8 & 10 Stud	1		X						
1	FP20DB0200	BEAM 5 Spoke	1		X						
1	FU20DB0400	BEAM 8 & 10 Stud	1			X					
1	FU20DB0200	BEAM 5 Spoke	1			X					
1	FN20DB0100-1820	BEAM	1					X			
1	FU20DB0100-1820	BEAM	1							X	
			<b>CALIPER</b>								
			QTY Per Axle	PAN 19/ SN6 DISC BRAKE							
2	6401951310	CALIPER – LH – WABCO PAN 19	1						X		
	K128778K50	CALIPER – LH – Knorr-Bremse SN6	1						X		
3	6401951320	CALIPER – RH – WABCO PAN 19	1						X		
	K128779K50	CALIPER – RH – Knorr-Bremse SN6	1						X		
4	B30-0102	BOLT	12						X		
B	12999737	PAD SET – WABCO PAN 19	1						X		
	K290627K50	PAD SET – Knorr-Bremse SN6	1						X		
C	6402259212	CALIPER SEAL/GUIDE PIN KIT – WABCO PAN 19	2						X		
	K113545K50	CALIPER SEAL/GUIDE PIN KIT – Knorr-Bremse SN6	2						X		
D	K201731K50	Knorr-Bremse SN6 & SC7	2								
			<b>HUB OPTIONS</b>								
			QTY Per Axle	10x285		10x335		8x275		5 SPOKE	
				TN	TP	UNIT	TN	UNIT	TN	UNIT	TP
5	FW429	HUB	2	X							
5	FW431	HUB	2		X						
5	FW473	HUB	2			X					
5	FW443	HUB	2				X				
5	FW444	HUB	2				X				
5	FW428	HUB	2					X			
5	FW497	HUB	2						X		
5	FW336	HUB	2							X	
5	FW352	HUB	2								X
6	BC8433	ROTOR PAN 19 – 8 bolt 90T	2	X			X		X		
6	H32-D102	ROTOR PAN 19 – 10 bolt 80T	2		X						
6	H32-D101 (Note 3)	ROTOR PAN 19 – 10 bolt 90T/80T	2			X		X			
6	BC8439	ROTOR PAN 19 – 8 bolt 90T	2						X		
6	BC8435TP	ROTOR PAN 19 – 5 bolt 90T	2							X	
6	BC8435	ROTOR PAN 19 – 5 bolt 90T	2								X
A	FWA473-01	HUB / ROTOR ASSY.	2			X					



# PARTS VIEW

Ref No.	PART No.	DESCRIPTION	APPLICATION									
			HUB OPTIONS									
			QTY Per Axle	10x285			10x335		8x275		5 SPOKE	
TN	TP	UNIT		TN	UNIT	TN	UNIT	TP	UNIT			
7	KH800104 (Note 1)	STUD SHORT (M22x94mm)	→	20	20	20	20	20	16	16		
7	KH800239 (Note 1)	STUD LONG (M22x122mm)	→	20	20	20	20	20	16	16		
8	KHDB012	BOLT HUB-ROTOR M14x1.5	→	16			16		16			
8	KHDB014	BOLT HUB-ROTOR M16x2	→			20		20		16		
8	KHDB015	BOLT HUB-ROTOR M12x1.75	→		20							
9	KH800238 (Note 2)	NUT STD (Std .33mm on Disc)	20	X	X	X	X	X	X	X		
10	KH800110B	HUB CAP – Ø139.7PCD-BLACK	2	X			X		X			
10	KHALU01	HUB CAP – Ø139.7PCD-ALUM'N	2	X			X		X			
10	H14-0301	HUB CAP – Ø171.5PCD	2		X							
10	N300016-002	HUB CAP – Ø179PCD	2			X		X		X		X
10	KH800205B	HUB CAP-SCREW ON-BLACK	2								X	
10a	H15-0201	O-RING	2								X	
11	KH800055	WASHER – HUB CAP BOLT	12	X	X	X	X	X	X	X	X	X
12	A11-0101	WASHER BEARING	2		X	X		X		X	X	X
13	KH800122	BOLT – HUB CAP	12	X	X	X	X	X	X	X	X	X
14	N300200-002	SEAL SHIELD	2	X	X	X	X	X	X	X	X	X
15	BTH-0500	BEARING CARTRIDGE (11T)	2			X		X		X		X
15	H12-0400	BEARING OUTER	2	X			X		X			
15	H12-0100	BEARING INNER	2		X						X	
15	H12-0300	BEARING INNER	2	X			X		X			
15	H12-0100	BEARING OUTER	2		X						X	
16	FHD-046	DECAL	2			X		X		X		X
17	802 (373-0243)	SEAL	2	X			X		X			
17	801 (373-0223)	SEAL	2		X						X	
17	809	SEAL (Axles build from 2012)	2			X		X		X		X
17	393-0273	SEAL (Axles build before 2012)	(2)			(X)		(X)		(X)		(X)
18	STP275	DECAL CAP	2			X		X		X		X
19	A13-0101	COTTER PIN	2		X						X	
19	A25-0101	LOCK TAB	2	X			X		X			
19	N300002-002	LOCK TAB	2			X		X		X		X
19	A11-0201	LOCK WASHER	2	X			X		X			
20	A12-0101	NUT SPINDLE	2		X	X		X		X	X	X
20	A12-0201	NUT SPINDLE – INNER	2	X			X		X			
20	A24-0101	NUT SPINDLE – OUTER	2	X			X		X			
21	10002	FUWA BADGE	2			X		X		X		X
22	CRS.S	SNAP RING	2			X		X		X		X
23	N300015-002	O-RING – HUB CAP	2			X		X		X		X
24	H15-0102	GASKET – HUB CAP	2	X			X		X			
24	KH3303118	GASKET – HUB CAP	2		X						X	
25	A15-0101	ABS SENSOR LEAD (400mm)	2	X	X	X	X	X	X	X	X	X
26	A16-0101	SLEEVE	2	X	X	X	X	X	X	X	X	X

**Note:** TN: tapered spindle (small and big bearing) TP: parallel spindle (two bearings the same) NSS: Not Sold Separately  
 Hub cap: May vary (Oil hubs, Customer specs and Hub odometer may require different hub caps)  
 1. Studs may be short or long, check before you order.  
 2. The long Nut is also available (32mm); H34-0901. Can be used on long studs with steel wheels.  
 3. The rotor H32-D101 had 90T until approx. 2020. From 2020 it has 80T