

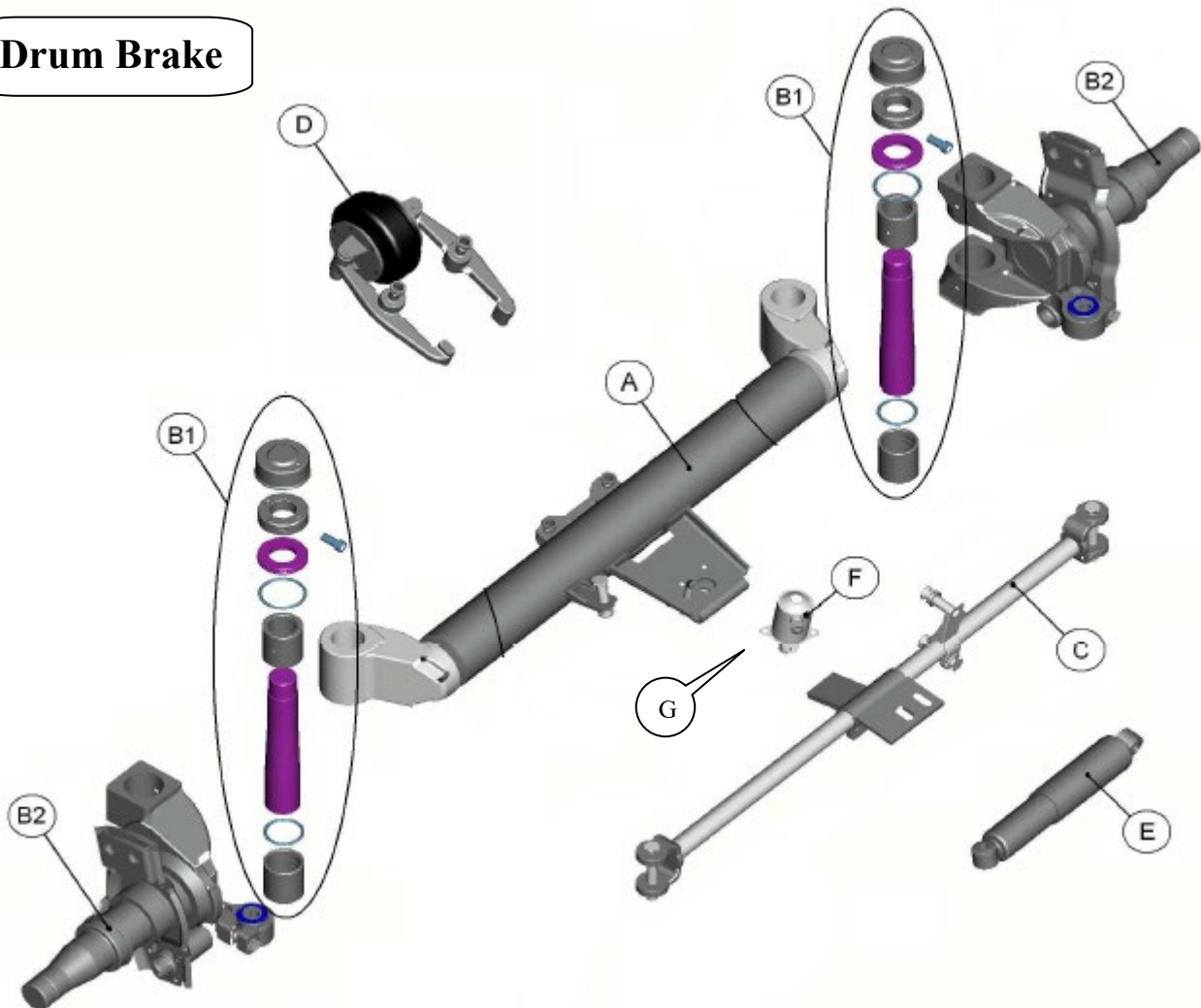


PARTS VIEW

KHITCH

KSS16/KSS1N SELF STEER AXLE

Drum Brake



MAIN AXLE PARTS DRUM BRAKE, TP

			N100912-001	Qty/AXLE
Ref No.	PART NUMBER	DESCRIPTION		
A	GF001010494A	AXLE BEAM 10t – 1150mm centres	X	1
B1	GF006010012A	KING PIN SET – LH & RH	X	1
B2	GF002010491A	KNUCKLE – LH ONLY – Parallel Spindle TP	X	1
B2	GF002010490A	KNUCKLE – RH ONLY – Parallel Spindle TP	X	1
C	GF004010165A	TRACK ROD 10t – 1150mm centres	X	1
D	GF003010037A	TORPESS – COMPLETE	X	1
E	B0101000401A	SHOCK ABSORBER	X	1
F	B1303001300A	LOCKING CYLINDER – Ø25mm PIN	X	1
G	B2102002500A	SOLENOID (On request only)	-	1

For Product Support call: (03) 9369 0000 | (07) 3372 2223 | (08) 9350 6470

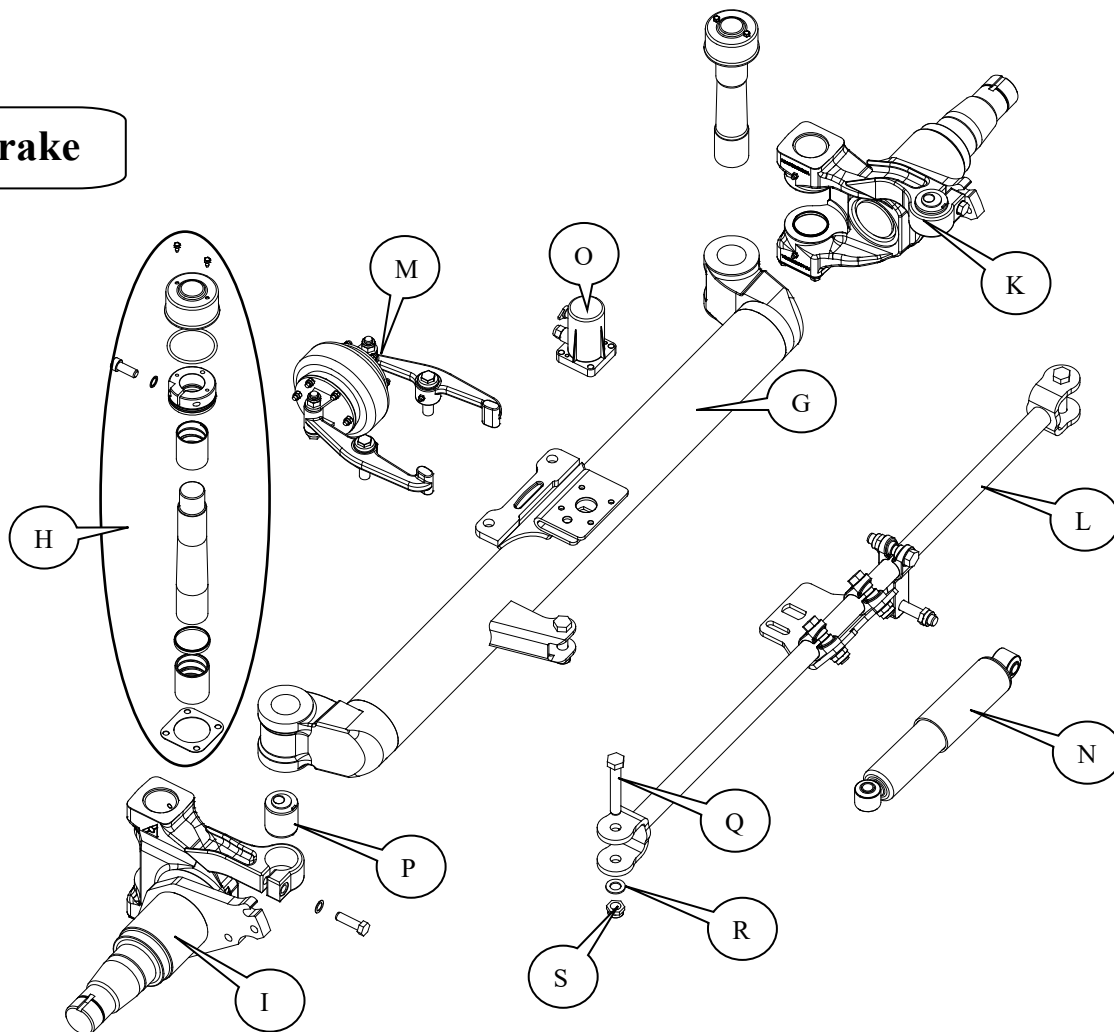
www.khitch.com.au Uncontrolled document when printed! Bulletin No: KPS-001-0513 Rev10 1



KHITCH

PARTS VIEW

Disc Brake



MAIN AXLE PARTS DISC BRAKE

			N100902-017	Qty/AXLE
Ref No.	PART NUMBER	DESCRIPTION		
G	GF001010601A	AXLE BEAM 10t	X	1
H	GF006010012A	KING PIN SET - LH & RH	X	1
I	GF002010718A	KNUCKLE - LH ONLY - Tapered Spindle TN	X	1
K	GF002010717A	KNUCKLE - RH ONLY - Tapered Spindle TN	X	1
L	GF004010318A	TRACK ROD 10t - 1150mm centres	X	1
M	GF003010037A	TORPESS - COMPLETE	X	1
N	B0101000401A	SHOCK ABSORBER	X	1
O	B1303001300A	LOCKING CYLINDER - Ø25mm PIN	X	1
P	B1605000900A	ECCENTRIC BUSH	X	2
Q	B0710001100A	KNURLED BOLT M20	X	2
R	B0703000100A	WASHER	X	2
S	B0702200H23A	NUT	X	2

For Product Support call: (03) 9369 0000 | (07) 3372 2223 | (08) 9350 6470

www.khitch.com.au

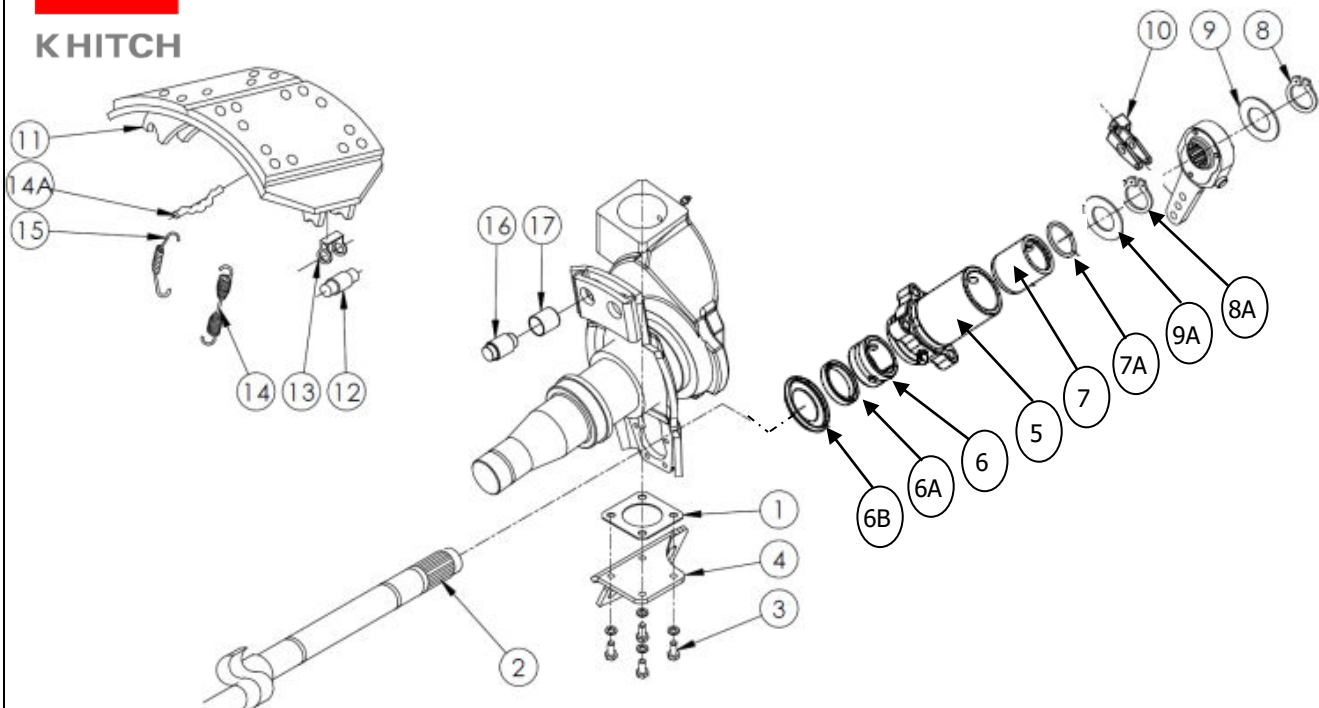
Uncontrolled document when printed!

Bulletin No: KPS-001-0513 Rev10



KHITCH

PARTS VIEW



BRAKE AND KNUCKLE COMPONENTS DRUM BRAKE

Ref No.	PART NUMBER	DESCRIPTION	Qty / Axle
1	N0902000100A	GASKET	2
2	21227113N	S-CAM – RH Axles manufactured AFTER June 2013	1
2	21227114N	S-CAM – LH Axles manufactured AFTER June 2013	1
3	B071010X025A	BOLT – M10x1.5x25	8
4	G0104058300A	BOOSTER BRACKET – RH 24° – 85mm offset	1
4	G0104058350A	BOOSTER BRACKET – LH 24° – 85mm offset	1
5	NSS	S-CAM TUBE	2
6	21225705	BUSH (ID 42.9mm) Axles manufactured BEFORE June 2013	2
6	1225-N-1158	BUSH (ID 41.1mm) Axles manufactured AFTER June 2013	2
6A	A-1205-S-2645	LIP SEAL Axles manufactured AFTER June 2013	2
6B	1229-K-4795	WASHER SEAL Axles manufactured AFTER June 2013	2
7	N0503000100A	BUSH (Slack Adjuster side)	2
7A	21016721	O-RING	2
8	99507030 (C16-0601)	EXTERNAL CIRCLIP	2
8A	C16-0501 (99070006)	EXTERNAL CIRCLIP	2
9	21219862	RETAINING WASHER	2
9A	C15-0102 (21006624)	RETAINING WASHER	2
10	MC8425KTAS	OFFSET BOOSTER ROD YOKE KIT – 5/8” OFFSET	1
11	D20-020101*	BRAKE SHOE SET (2)	2
12	NSS*	ROLLER	4
13	NSS*	ROLLER RETAINER	4
14	NSS*	RETURN SPRING	2
14A	NSS*	RETAINING PIN	4
15	NSS*	ANCHOR SPRING	2
16	NSS*	ANCHOR PIN	4
17	NSS*	ANCHOR PIN BUSH	4
*	D20-020101K	BRAKE SHOE KIT (1 wheel) – CONTAINS ITEMS 11-17	2

For Product Support call: (03) 9369 0000 | (07) 3372 2223 | (08) 9350 6470

www.khitch.com.au

Uncontrolled document when printed!

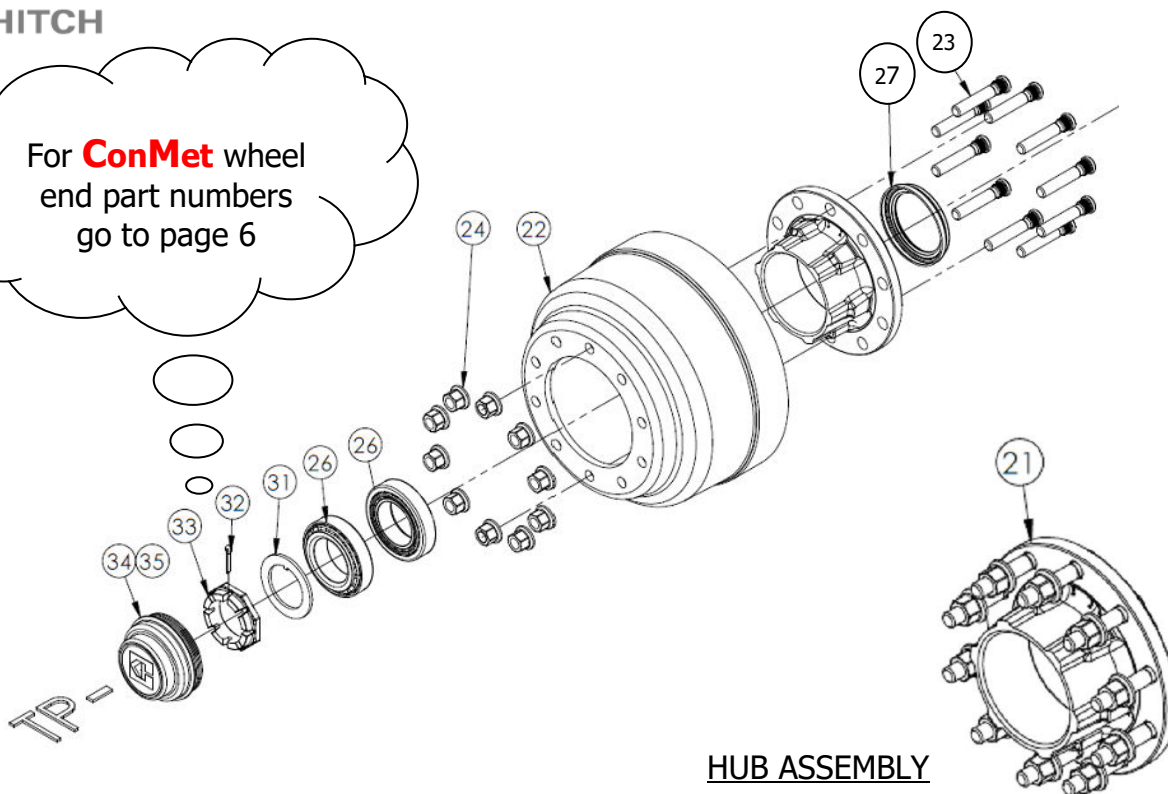
Bulletin No: KPS-001-0513 Rev10



KHITCH

PARTS VIEW

For **ConMet** wheel end part numbers go to page 6



HUB ASSEMBLY

WHEEL END COMPONENTS, DRUM BRAKE, Parallel Spindle TP

Ref No.	PART NUMBER	DESCRIPTION	Qty / Axle
21	KH3601-0302	HUB ASSY – Short stud	2
	KH3601-0302Z	HUB ASSY – Long stud	
22	KH3602-0303	DRUM	2
23	KH800104 (H33-0301)	STUD SHORT (M22x94)	20
	KH800239 (H33-0302)	STUD LONG (M22x122)	
24	KH800096 (H34-0301)	NUT M22 x 32 A/F	20
26	H12-0100	BEARING INNER	2
	H12-0100	BEARING OUTER	2
27	373-0223 (801)	HUB SEAL	2
31	A11-0101	WASHER BEARING	2
32	A13-0101	COTTER PIN	2
33	A12-0101	NUT SPINDLE	2
34	H15-0201	O-RING – HUB CAP	2
35	KH800205B	HUB CAP – SCREW ON – BLACK	2

Refer to Parts view Bulletin No: KPS-001-0912 for 10x335 & 5 spoke wheel end components.

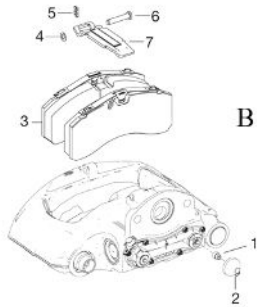
For Product Support call: (03) 9369 0000 | (07) 3372 2223 | (08) 9350 6470

www.khitch.com.au Uncontrolled document when printed! Bulletin No: KPS-001-0513 Rev10 4

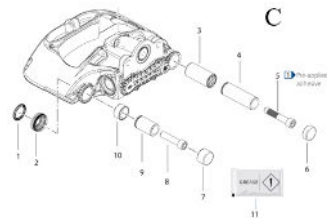


PARTS VIEW

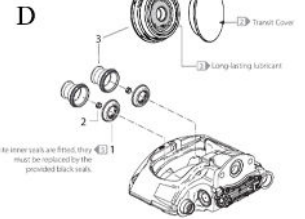
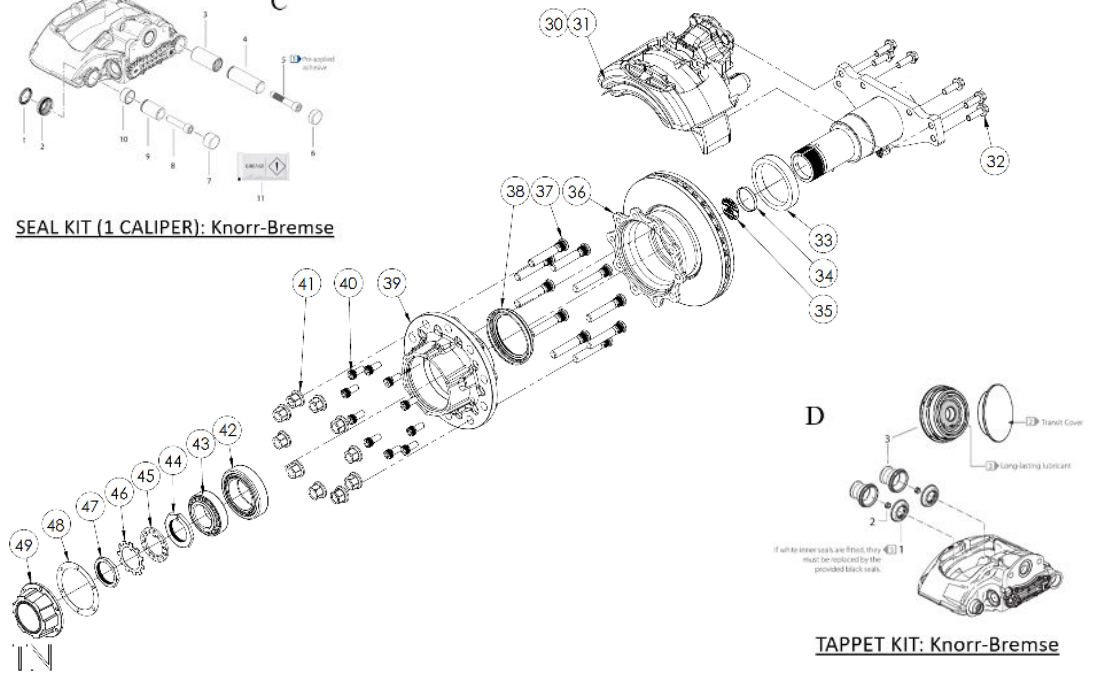
KHITCH



PAD SET (1 AXLE): Knorr-Bremse



SEAL KIT (1 CALIPER): Knorr-Bremse



TAPPET KIT: Knorr-Bremse

WHEEL END COMPONENTS, DISC BRAKE, Tapered Spindle TN

Ref No.	PART NUMBER	DESCRIPTION	Qty / Axle
30	6401951310	WABCO CALLIPER PAN-19 L/H	1
	K128778K50	Knorr-Bremse SN6 Calliper L/H	1
31	6401951320	WABCO CALLIPER PAN-19 R/H	1
	K128779K50	Knorr-Bremse SN6 Calliper R/H	1
32	B30-0102	BOLTS M16	12
33	N300200-002	SEAL SHIELD	2
B	12999737	PAD SET – WABCO PAN 19	1
	K290627K50	PAD SET – Knorr-Bremse SN6	1
C	6402259212	CALIPER SEAL KIT – WABCO PAN 22	2
	K152500K50	CALIPER SEAL KIT – Knorr-Bremse SC7	2
D	K201731K50	TAPPET KIT – Knorr-Bremse SC7	1
34	NA	NA	-
35	NA	NA	-
36	BC8433	ROTOR	2
37	KH800239	STUD LONG M22x122mm	20
38	373-0243	SEAL HI TEMP TN	2
39	FW429	HUB 10x285 TN	2
40	KHDB012	BOLT CAPSCREW M14	16
41	KH800238	WHEEL NUTS 33MM	20
42	H12-0300	BEARING – INNER	2
43	H12-0400	BEARING – OUTER	2
44	A12-0201	AXLE NUT –TN INNER	2
45	A11-0201	WASHER-AXLE NUT TN	2
46	A25-0101	LOCK TAB WASHER TN	2
47	A24-0101	AXLE NUT-TN OUTER	2
48	H15-0102	GASKET HUB CAP TN	2
49	KHALU01	HUB CAP	2

For Product Support call: (03) 9369 0000 | (07) 3372 2223 | (08) 9350 6470

www.khitch.com.au Uncontrolled document when printed! **Bulletin No: KPS-001-0513 Rev10** 5



PARTS VIEW

KHITCH

Ref No.	PART No.	DESCRIPTION	APPLICATION		
		ConMet WHEELEND (pre-set) Drum Brake, Tapered Spindle TN			
			QTY. PER AXLE	TN ConMet PLUS	
21	10045570	IRON HUB c/w LONG STUDS & BEARINGS & SPACER & SEAL Casting number:10033293 (used for lube volume)	2	X	
22	10037763	TRUE TURN BRAKE DRUM10x285	2	X	
23	102292	STUD LONG (M22x1.5x136mm)	20	X	
25	KH800096	NUT – M22 x 32A/F	20	X	
27	802	SEAL	2	X	
33	10036552	HUB NUT KIT	2	X	
37	10083537	HUB CAP	2	X	
37a	N300202-004	HUBO BRACKET - 10083537 PCD 140.5	As required		
36	KH330-3009	GASKET - HUB CAP	2	X	
NS	10081730	BEARING KIT c/w SPACER & SEAL	2	X	

Ref No.	PART No.	DESCRIPTION	APPLICATION		
		ConMet WHEELEND (pre-set) Drum Brake Parallel Spindle TP			
			QTY. PER AXLE	TP ConMet PLUS	
21	10041701	ALUMINIUM HUB c/w LONG STUDS & BEARINGS & SPACER & SEAL Casting number: 10033028 (used for lube volume)	2	X	
22	10037763	TRUE TURN, BRAKE DRUM10x285	2	X	
23	102292	STUD LONG (M22x1.5x136mm)	20	X	
24	KH800096 (H34-0301)	NUT – M22 x 1.5 – 32 mm A/F	20	X	
27	801	SEAL	2	X	
33	10036553	HUB NUT KIT	2	X	
36	10033396	GASKET – HUB CAP	2	X	
37	10085634 (10086311)	HUB CAP	2	X	
37a	N300202-003	HUBO BRACKET - PCD165 to suit ConMet 10085634 (PCD 171.5)	As required		
		GASKET - HUB CAP	2	X	
NS	10081730	BEARING KIT c/w SPACER & SEAL	2	X	

For Product Support call: (03) 9369 0000 | (07) 3372 2223 | (08) 9350 6470

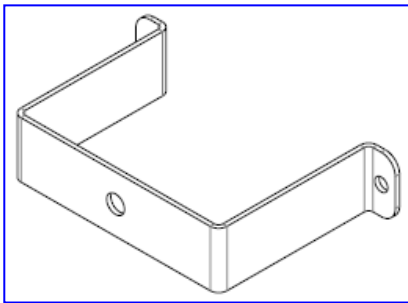
www.khitch.com.au Uncontrolled document when printed! Bulletin No: KPS-001-0513 Rev10 6



KHITCH

PARTS VIEW

** Upon removing the hub cap, the new PreSet PLUS spindle nut looks distinctly different and is contained in the hub. For all the service information please see the ConMet Service manual FKH-SER-0021



37a

PreSet Plus Spindle Nut System

ConMet's patented integrated nut system significantly improves wheel end clamp load, makes installation easier, aids in removal of the hub and provides improved safety features.



1 ltr of SYNTHETIC SEMI FLUID GREASE MOBILITH SHC007

Part Number: **133680-1L**

Note: Check service information for correct fill volume.

