

# FW20 Series

## Suspension – Fabricated Mechanical



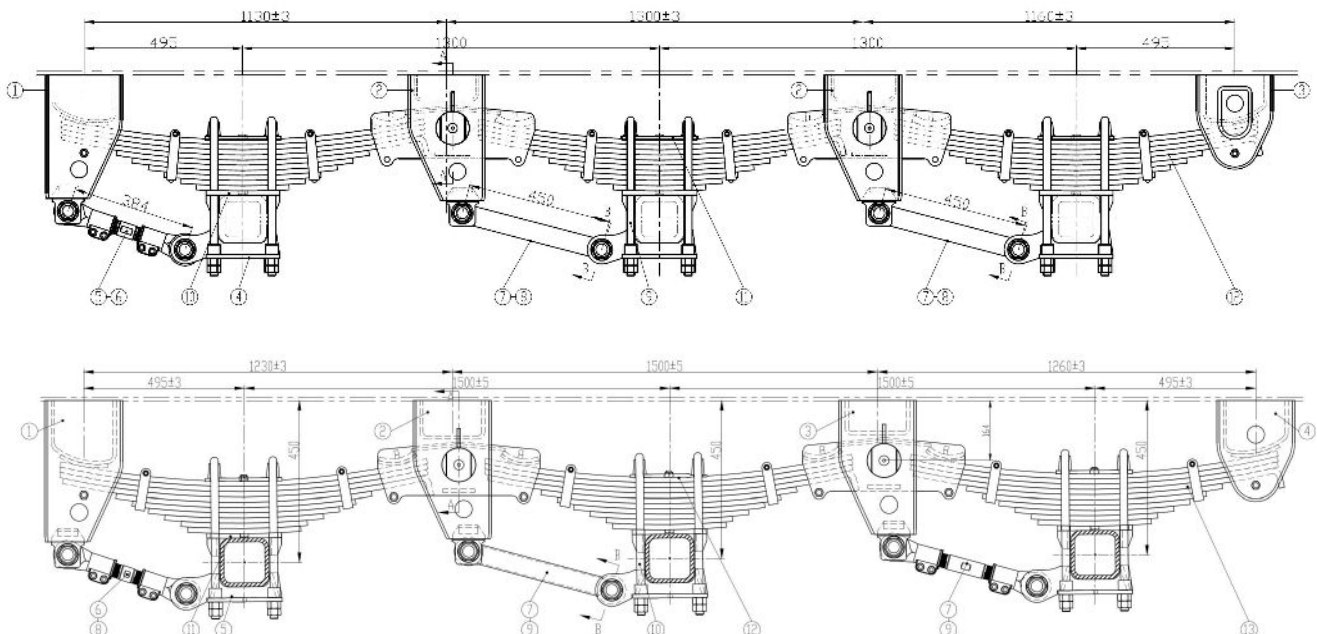
### Suspension Standard Features

- Suited for 6" square beam
- Rubber bushes (X shape groove)
- Chrome Rocker Equaliser Pins
- Vesconite Rocker Bushes
- Available in Overslung configurations
- Fabricated from high grade steel

Suspension Model	No. of Axles	Nominal Spread (mm)	No. of Leaves	Approx Unladen Ride Height (mm)	Capacity per Axle (tonne)	Spring Deflection (mm/tonne)	CTA	Weight Approx (kg)
FW20B.1/450/AQ6/10-002	1	N/A	10	450	20	-	N.A	-
FW20B.2/1300/450/AQ6/10-002	2	1300	10	450	20	-	N.A	-
FW20B.2/1500/450/AQ6/10-002	2	1500	10	450	20	-	N.A	-
FW20B.3/1300/450/AQ6/10-002	3	1300	10	450	20	-	N.A	-
FW20B.3/1500/450/AQ6/10-002	3	1500	10	450	20	-	N.A	-
FW20B.4/1300/450/AQ6/10-002	4	1300	10	450	20	-	N.A	-
FW20B.4/1500/450/AQ6/10-002	4	1500	10	450	20	-	N.A	-

\* Contact FKH for optional features.

\*\*Blank (-) information is available upon customers request.



# FUWA FABRICATED SUSPENSION STOCK CODE CONFIGURATOR

## EXPLANATION OF FUWA FABRICATED SUSPENSION CODE

**FW 20B . 3 / 1300 / 450 / AQ6 / 10 - 002**

